

**VLX-450 Inline 450W Chiller Subassembly,
24VDC (Rev.1.2)**



VLX-450 is a ready-to-integrate, compact, open frame chiller. Cooling performance is 450W, or 1535 BTU/hr @25°C liquid & ambient (0°C delta-T). External liquid coolant must be pumped through the VLX-450's copper-brazed stainless steel plate heat exchanger via two G 1/4 BSPP fittings. Fittings and coolant pump are not included.

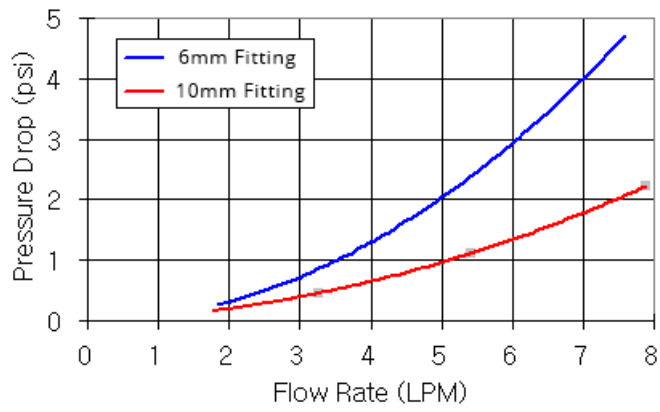
A toggle switch selects between two methods of chiller control: 0-5V input signal or manual speed knob. Wire terminals are readily accessed if an alternative control scheme is desired.

- Cooling capacity: 450W (1535BTU/hr) @ 25°C liquid/ambient
- Refrigerant: R-134a
- Power input: 24VDC, 250W
- Designed for an operational temperature range of 0-40°C (ambient and liquid)
- G 1/4 BSPP threads on plate heat exchanger for inlet/outlet fittings

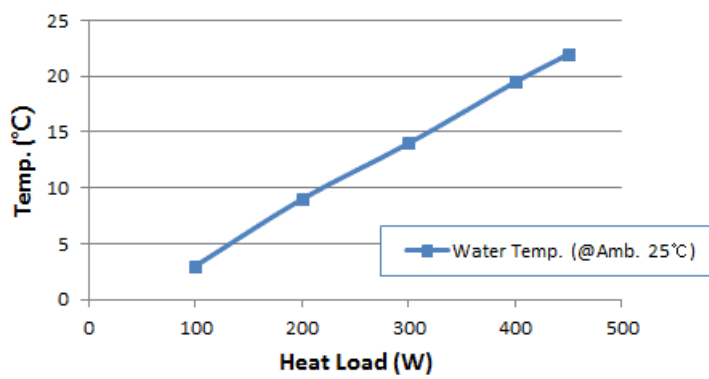
NOTE: Requires 24VDC input power. Koolance offers a separate [power supply](#) for AC wall outlet sources. Keep unit upright at all times, and for at least 24 hours before applying power to ensure sufficient oil reaches the compressor.

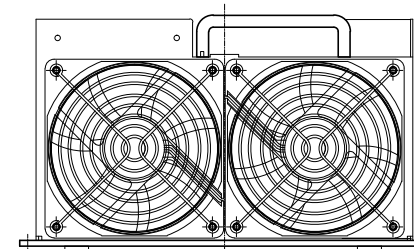
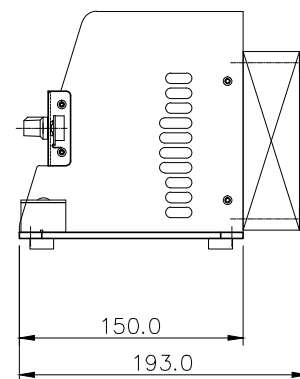
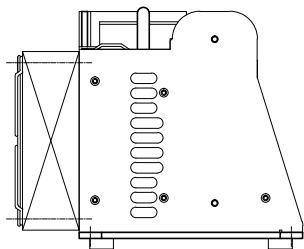
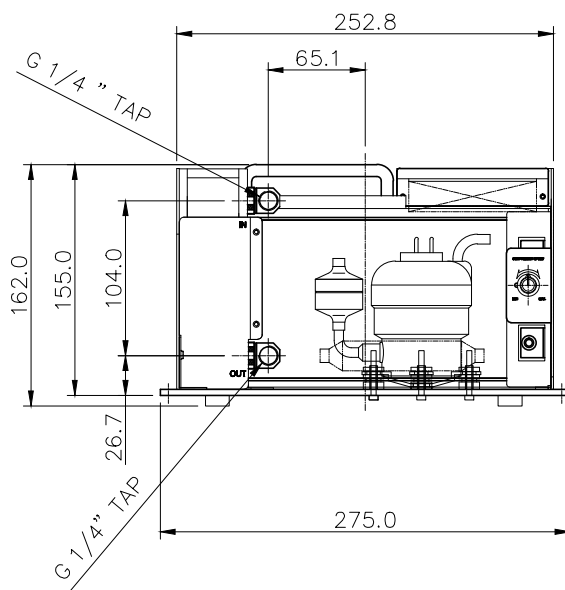
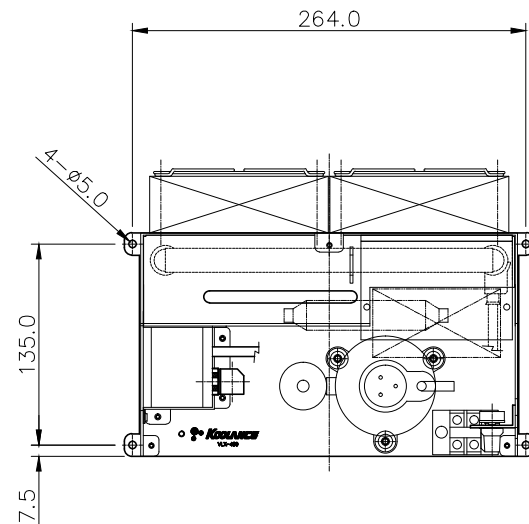
General	
Weight	10.20 lb (4.63 kg)
Fitting Thread	G 1/4 BSPP
Max Pressure Tolerance @ 25°C	2kgf/cm ² (28.5psi)
Max Temperature Tolerance	40°C (104°F)
Noise (dBA)	49-52
Cooling Systems	
Cooling Capacity	450W (1535BTU/hr) @ 25°C liquid & ambient (0°C dT)
Max Power Consumption	230W
Power Source	24 VDC


VLX-450 Pressure Drop Vs. Flow Rate



VLX-450 Water Temperature





NO.		DISCRIPTION				MATER'L		QUANTITY		REMARKS	
 KOOLANCE®						UNIT	MM	ITEM VLX-450			
						SCALE	N/S	TITLE			
		BY	BY	BY	APPRO BY	3RD ANGLE		Ass'y			
DATE						CODE NO.		DWG. NO.		PAGE	
		S.J.LEE									