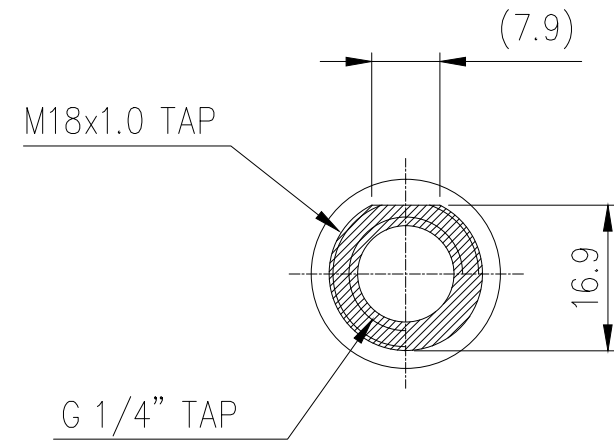
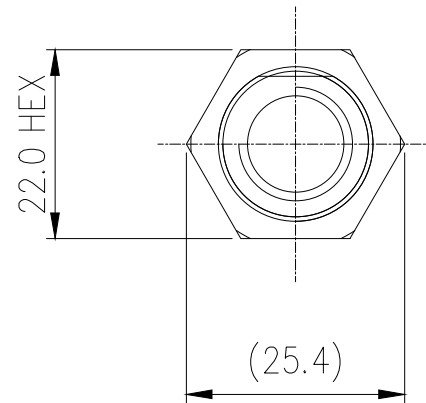
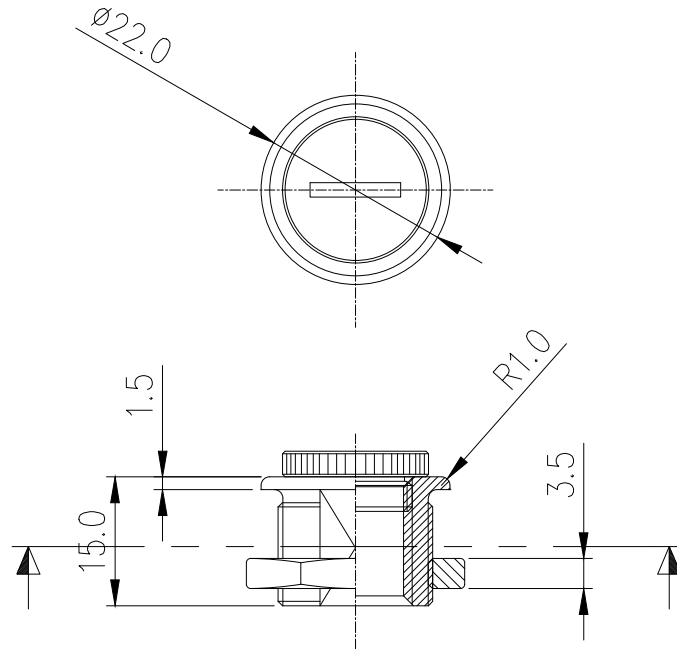





Coolant fill port for configurations without reservoirs (T-line air bleeding), or for separately locating the fill port from the reservoir. Can also be used as a drain valve if positioned low in the system. G 1/4 BSPP fitting threading, with bore size of 18mm (0.7"). Nickel-plated brass.

General	
Weight	0.06 lb (0.03 kg)
Fitting Thread	G 1/4 BSPP
Max Pressure Tolerance @ 25° C	15kgf/cm2 (213.4psi)
Max Temperature Tolerance	120° C (248° F)
Wetted Materials	Nickel-Plated Brass, EPDM



SECTION VIEW

NO.		DESCRIPTION				MATER'L		QUANTITY		REMARKS	
						UNIT	MM	PART NO. PRT-XGK			
						SCALE	N/S	TITLE Ass'y			
DATE		BY	BY	BY	APPROD BY	3RD ANGLE					
APR.07.2022		S.J.LEE				DWG. NO.		ITEM			