

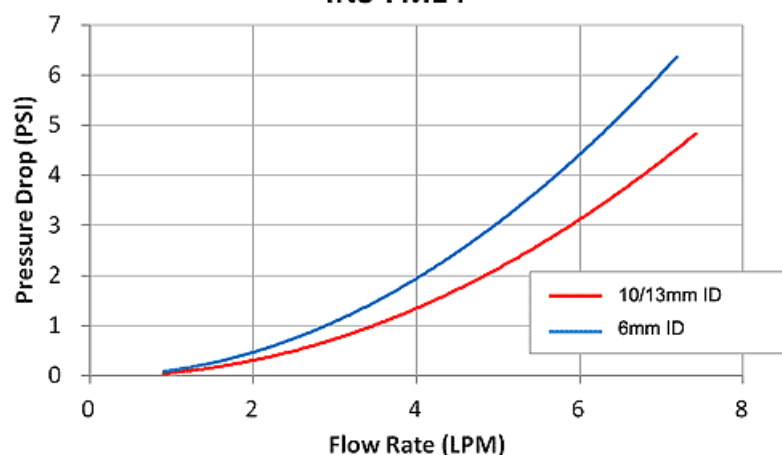
INS-FM14 Coolant Flow Meter, Reed Switch



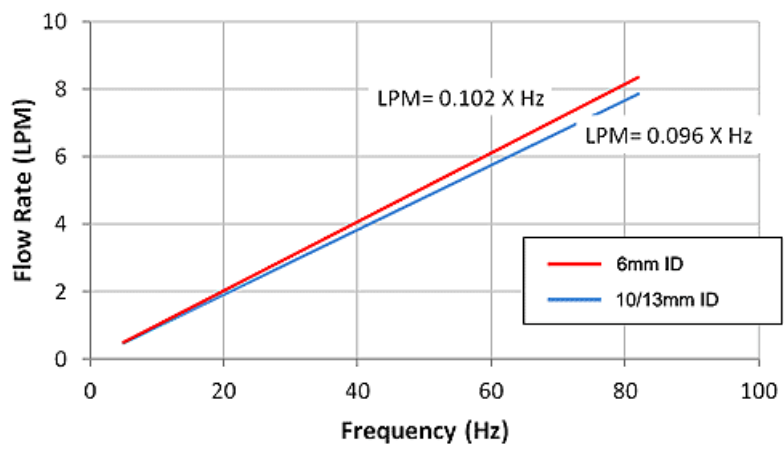
Koolance's inline flow meters provide electronic indication of real-time coolant flow rate. This model uses a reed switch to detect impeller rotation. G 1/4 BSPP fitting threads, and primary materials are nickel-plated brass and acrylic. Approximate read range is 0.5-10 LPM (7.8- 158GPH). Wire length is about 28" (70cm). It is recommended to keep current through the flow meter at 10mA or less to prevent damage.

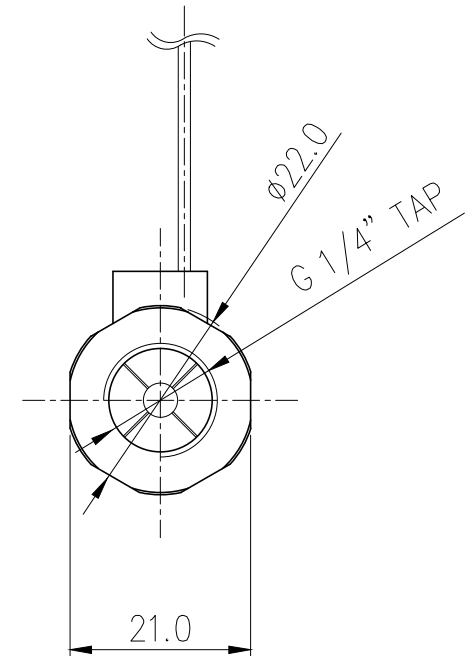
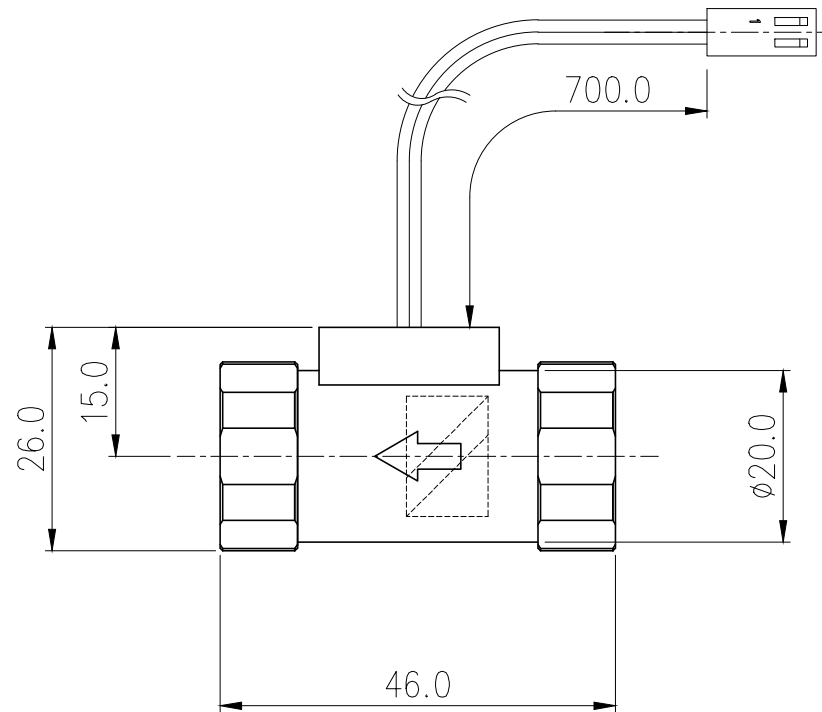
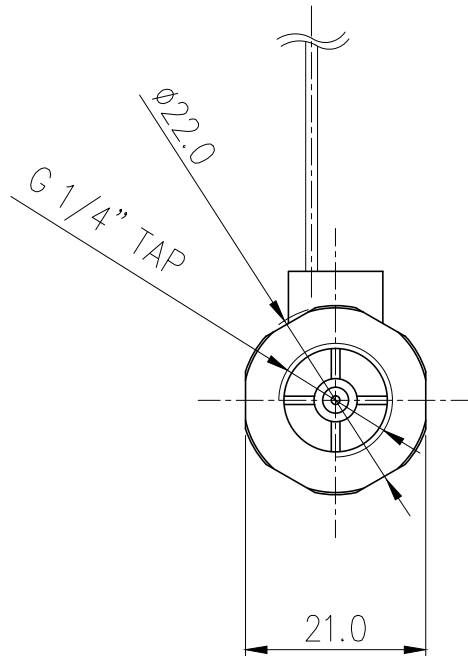
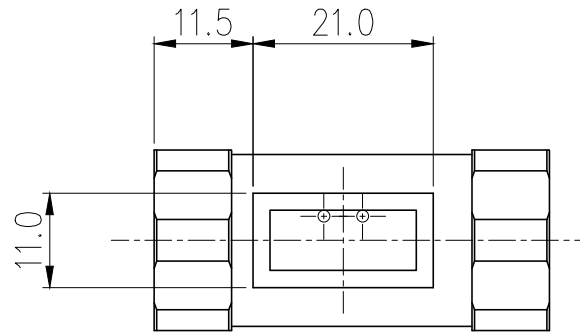
Flow Meters	
Accuracy (Approx.)	+/-5%
Flow Rate Range	0.5-10 LPM (7.8- 158GPH)
General	
Weight	0.13 lb (0.06 kg)
Fitting Thread	G 1/4 BSPP
Max Pressure Tolerance @ 25° C	2kgf/cm2 (28.5psi)
Max Temperature Tolerance	70° C (158° F)
Min Storage Temperature (*No Freezing)	0° C (32° F)
Wetted Materials	Nickel-Plated Brass, PTFE, PMMA Acrylic, Stainless Steel, POM Acetal, PBT, SmCo5


INS-FM14



INS-FM14





NO.		DESCRIPTION			MATER'L		QUANTITY		REMARKS	
					UNIT	MM	APPAR INS-FM14			
					SCALE	N/S	TITLE			
DATE		BY	BY	BY	APPRO BY	3RD ANGLE		Ass'y		
04/12/2017	S.J.LEE					CODE NO.		DWG. NO.		