

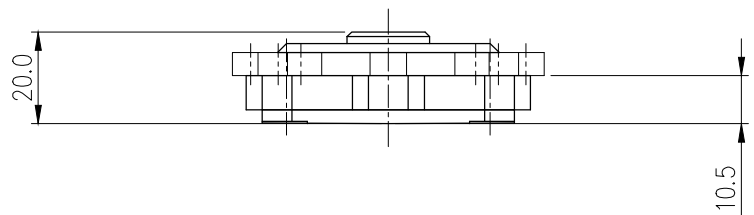
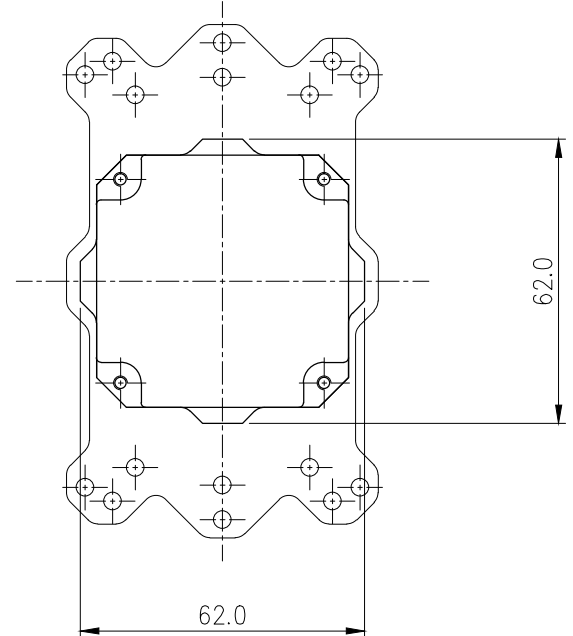
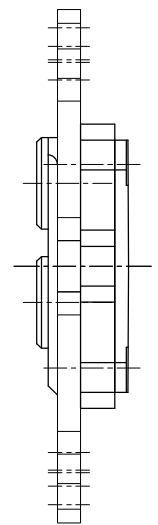
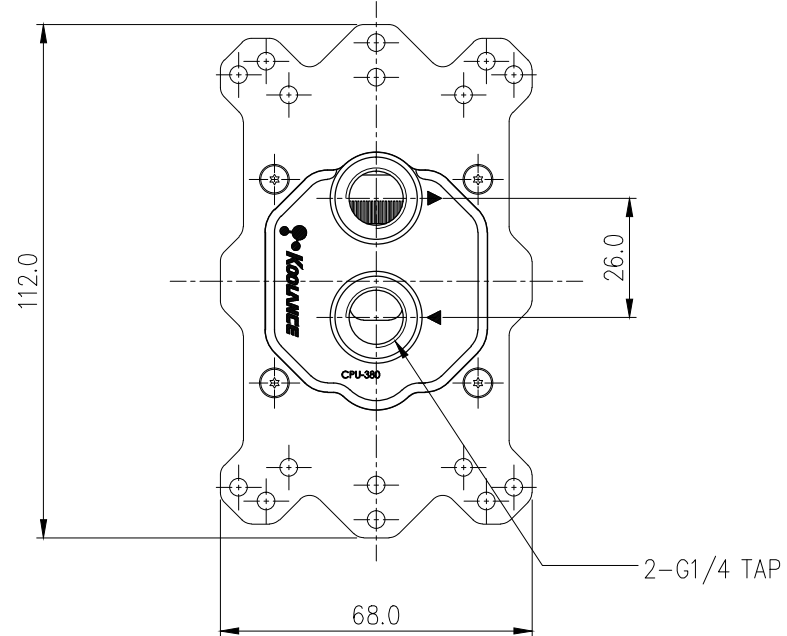


The Koolance CPU-380 sets a new standard for manufacturing quality and thermal performance. From the microfin cold plate and flow path to the mounting hardware, every aspect of the block has been refined with unprecedented results.

It features a microfin nickel-plated copper cold plate, acetal top, and thick steel mounting bracket. Standard G 1/4 BSPP threading will accept any Koolance fitting diameter up to 19mm (3/4in) OD compression style. Please select the desired fitting type for this base model (it does not include fittings). The CPU-380A supports most boards using the following processors:

- AMD socket AM2, AM2+
- AMD socket AM3, AM3+
- AMD socket FM1, FM2
- AMD socket G34 (with separate [hardware](#))

General	
Weight	0.38 lb (0.17 kg)
Max Pressure Tolerance @ 25 °C	2kgf/cm2 (28.5psi)
Max Temperature Tolerance	80 °C (176 °F)
Wetted Materials	Nickel-Plated Copper, Stainless Steel, POM Acetal, EPDM



NO.	DESCRIPTION				MATER'L	QUANTITY	REMARKS
<div> <div>DATE</div> <div>BY</div> <div>BY</div> <div>BY</div> <div>APPRO</div> <div>BY</div> </div> <div> <div>S.J.LEE</div> <div></div> <div></div> <div></div> <div></div> <div></div> </div>	<div> <div> <div>KOOLANCE</div> </div> </div>				UNIT	MM	APPAR CPU-380A
					SCALE	N/S	TITLE
					3RD ANGLE		Ass'y
					REF. NO.		DWG. NO.