



- [FAN-12025MBK](#) 120mm dual ball-bearing fan
- POM Acetal Reservoir
- Mounting bracket and hardware
- 3ft (1m) of 3/8in x 5/8in (10mm x 16mm) PVC tubing
- All necessary fittings (3/8in / 10mm ID barbs with clamps)

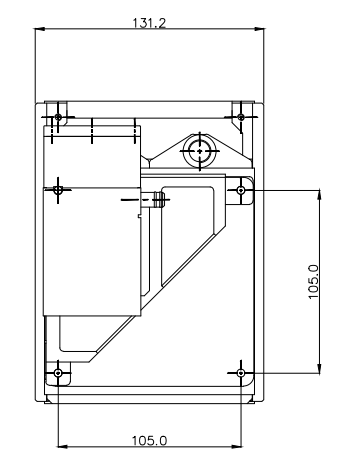
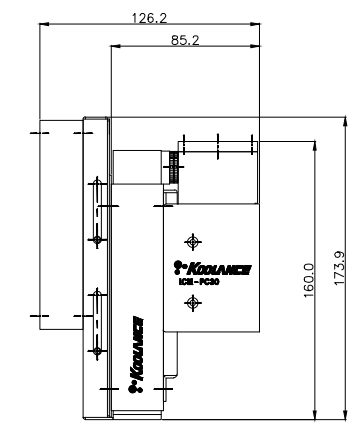
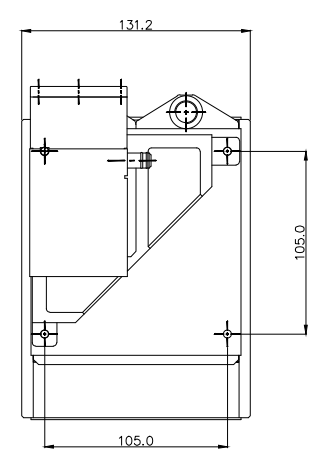
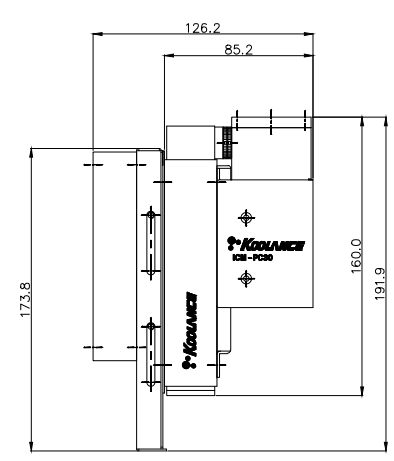
Koolance's DIY kit offers enthusiast-level thermal performance with an all-in-one form factor. ICM-PC30A includes the top-rated Koolance CPU-380I (Intel) water block, copper 30-FPI radiator and fan, PMP-300 pump, reservoir, and all necessary fittings and tubing. Simply select your desired coolant bottle (sold separately), and add some assembly. The kit's mounting bracket is adjustable, allowing a full size radiator and pump to fit most computer chassis with a rear 120mm fan location.

Components Included:


- [HX-CU420V](#) 30-FPI, 30mm thick, 1x120mm radiator
- [PMP-300](#) pump with PWM harness
- [CPU-380I](#) CPU water block (see product page for compatible sockets)

NOTE: A 120mm fan location is required for mounting, normally in the rear of the computer chassis. For some types of chassis and motherboards, there may be other physical conflicts preventing this cooling unit from being mounted within the chassis (such as especially tall VRM heat sinks near the CPU socket). Please see cooling unit's diagram for unit dimensions.

General	
Weight	5.00 lb (2.27 kg)
Cooling Systems	
Fans	1 x 120mm (90CFM)
Max Flow Rate (10-13mm ID)	PMP-300
Power Source	12 VDC
Radiator	Brass/Copper



REV	DATE	CONTENTS	REVD BY	CHKD BY	APPD BY
REVISION					

NO.		DESCRIPTION				MATER'L		QUANTITY		REMARKS	
						UNIT		MM		ITEM DIY Liquid Cooling Kit	
						SCALE		N/S			
		BY		BY		APPRO. BY		TITLE		ICM-PC30A, PC30I	
DATE						3RD ANGLE					
2013.11.18.		M.J.Lee						REF NO.		DWG. NO.	