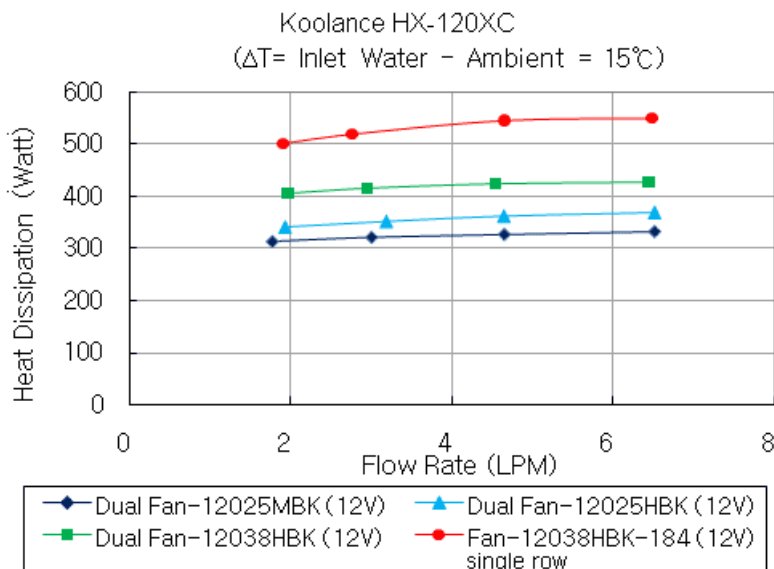


Radiator, 1x120mm Fans, 54mm Thick, 30-FPI
Copper

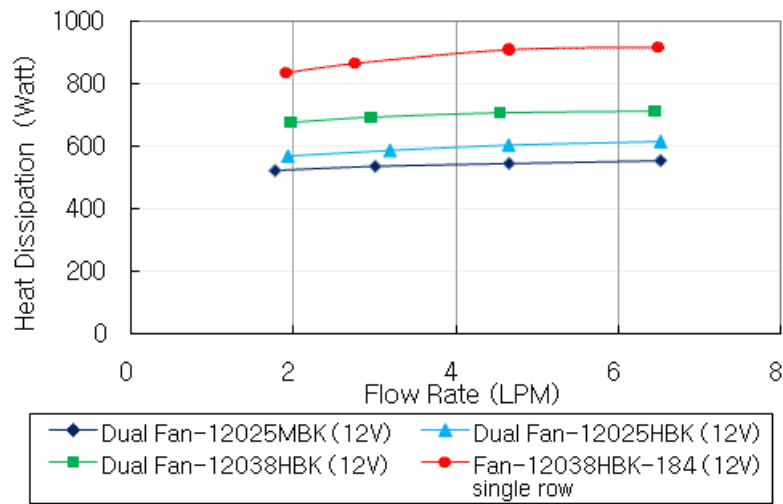


HX-120XC is an extra thick (54mm, 2.1in) copper core radiator with a fin density of 30 FPI (fins per inch). It offers greatest performance when sandwiched between multiple high speed 120mm fans. It has a dual pass coolant design, and is G 1/4 BSPP (parallel) thread for hose fittings. 30mm (1.18") long mounting screws are included for 25mm thick fans on one side only (see Koolance [radiator screw packs](#) for additional options).

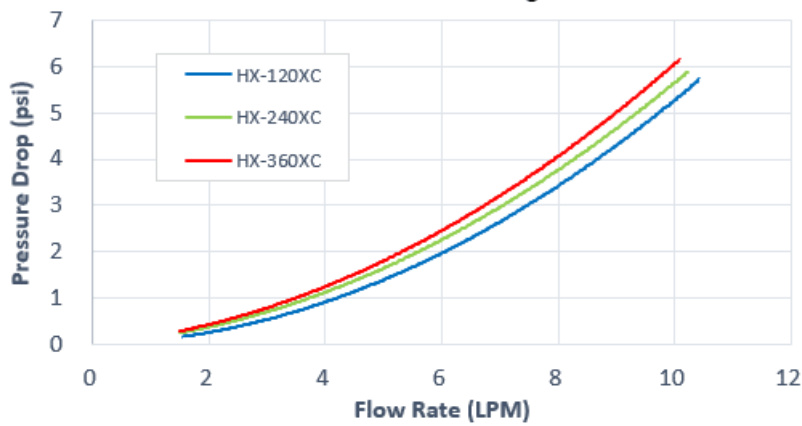
General	
Weight	1.60 lb (0.73 kg)
Fitting Thread	G 1/4 BSPP
Max Pressure Tolerance @ 25°C	1.5kgf/cm2 (21psi)
Max Temperature Tolerance	150°C (302°F)
Wetted Materials	Brass/Copper
Radiators	
Fan Capacity	1 x 120mm
Fins Per Inch (FPI)	30



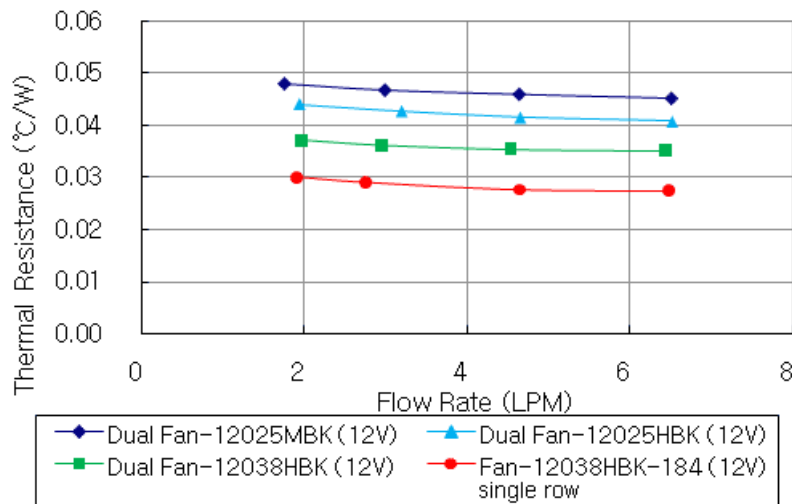
Koolance HX-120XC
 $(\Delta T = \text{Inlet Water} - \text{Ambient} = 25^\circ\text{C})$



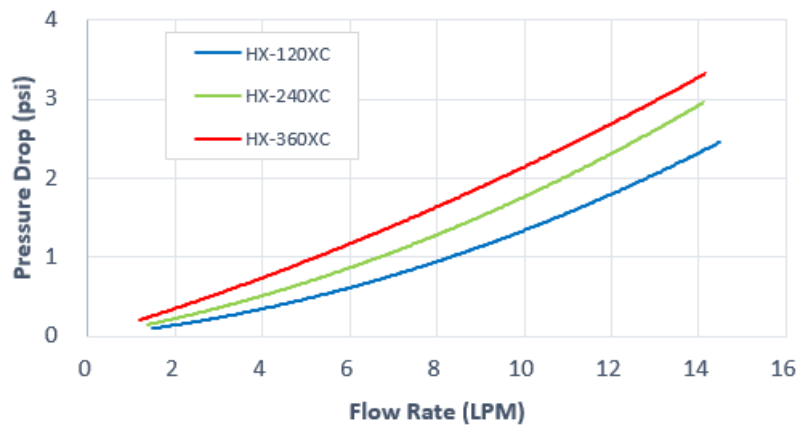
6mm ID Tubing

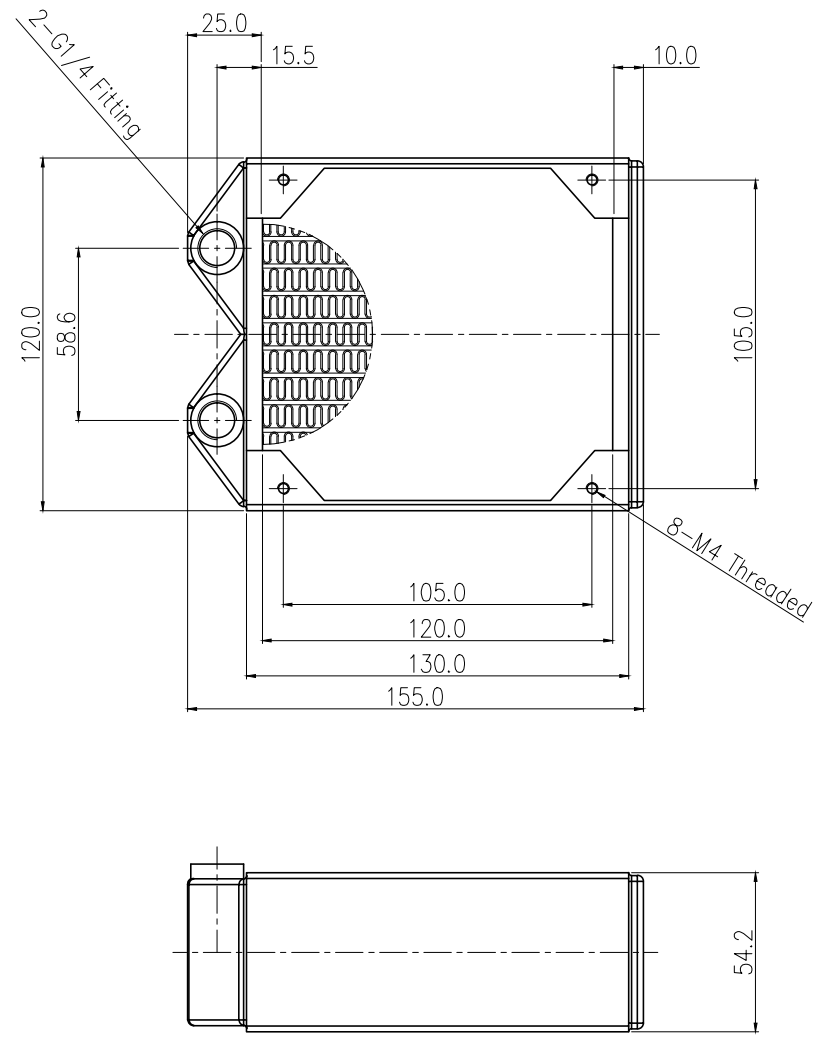


Koolance HX-120XC
 $(\Delta T = \text{Inlet Water} - \text{Ambient})$




10-13mm ID Tubing





REV	DATE	CONTENTS	REVD BY	CHKD BY	APPD BY
REVISION					

NO.		DESCRIPTION		MATER'L		QUANTITY	REMARKS
				UNIT	MM	ITEM	HX-120XC
				SCALE	N/S	TITLE	
DATE		BY	BY	BY	BY	3RD ANGLE	
		S.J.LEE				CODE NO.	
						DWG. NO.	PAGE