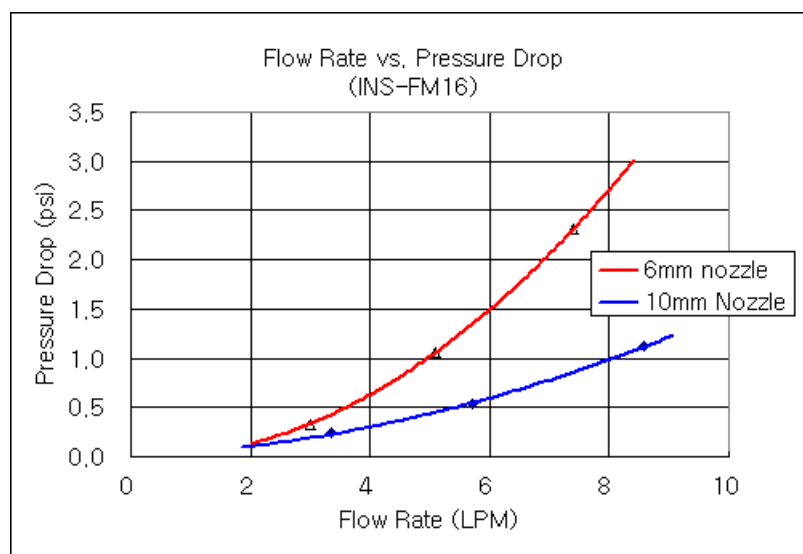


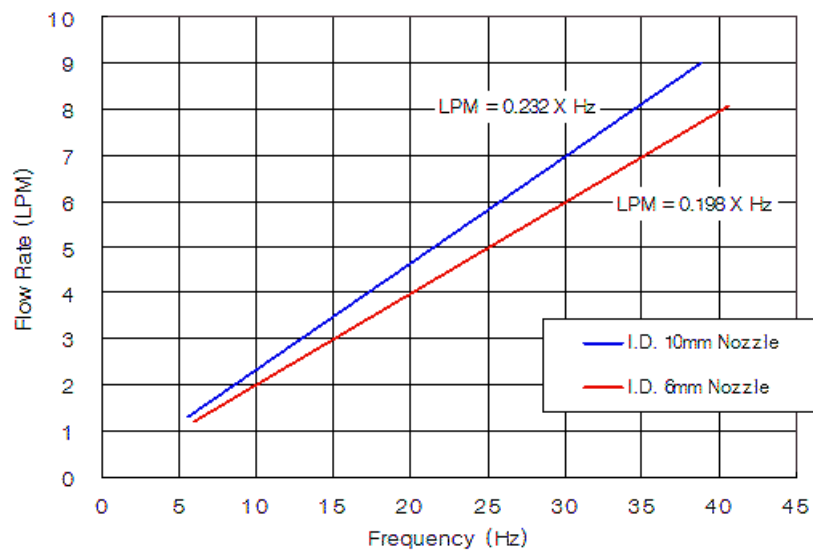
INS-FM16 Coolant Flow Meter, Reed Switch

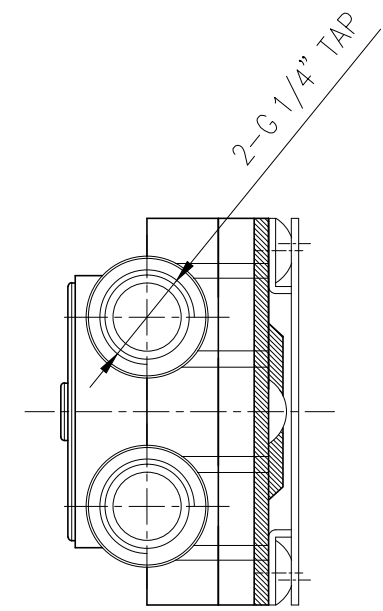
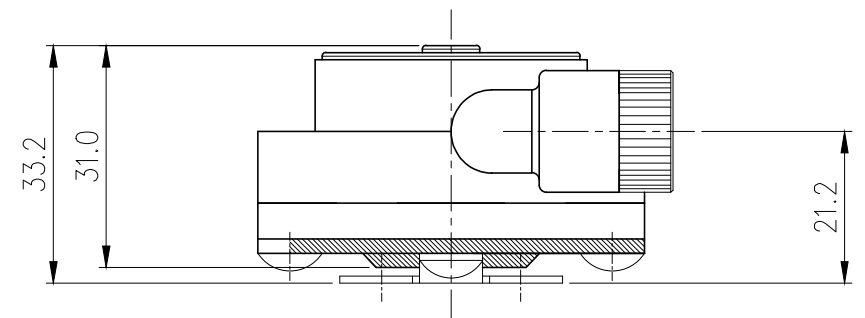
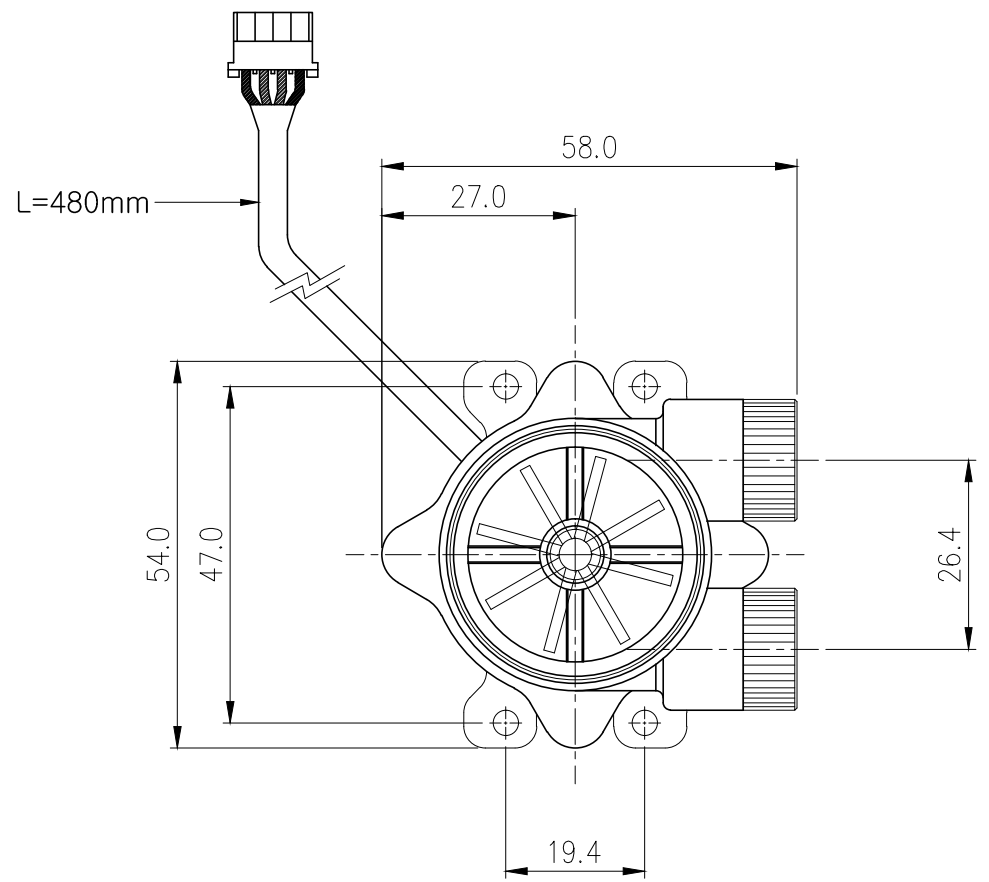



Koolance's inline flow meters provide electronic indication of real-time coolant flow rate. Internal LEDs can be illuminated with optional components described below. This model uses a reed switch to detect impeller rotation. G 1/4 BSPP fitting threads, and primary materials are nickel-plated brass and acrylic. Approximate read range is 0.5-15 LPM (7.8-238 GPH). Wire length is approximately 19" (48cm).

Flow Meters	
Accuracy (Approx.)	+/-5%
Flow Rate Range	0.5-15 LPM (7.8-238 GPH)
General	
Weight	0.23 lb (0.10 kg)
Fitting Thread	G 1/4 BSPP
Max Pressure Tolerance @ 25° C	2kgf/cm2 (28.5 psi)
Max Temperature Tolerance	70° C (158° F)
Min Storage Temperature (*No Freezing)	0° C (32° F)
Wetted Materials	Nickel-Plated Brass, Brass, PMMA Acrylic, Stainless Steel, POM Acetal, Plastic, SmCo5







NO.	DESCRIPTION				MATER'L		QUANTITY	REMARKS
					UNIT	MM	PART NO.	INS-FM16
					SCALE	N/S	TITLE Ass'y	
	BY	BY	BY	APPRO	BY			
DATE						3RD ANGLE		
05/15/2017	S.J.LEE					DWG. NO.		
						ITEM		