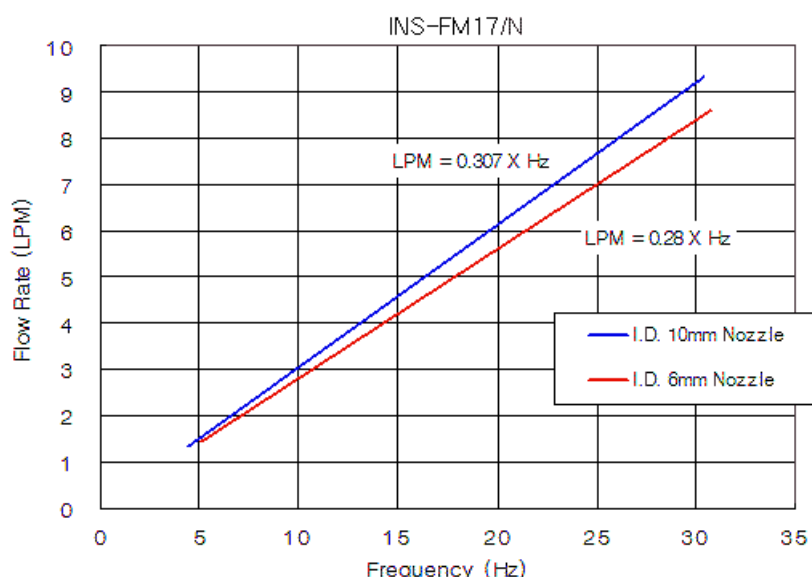


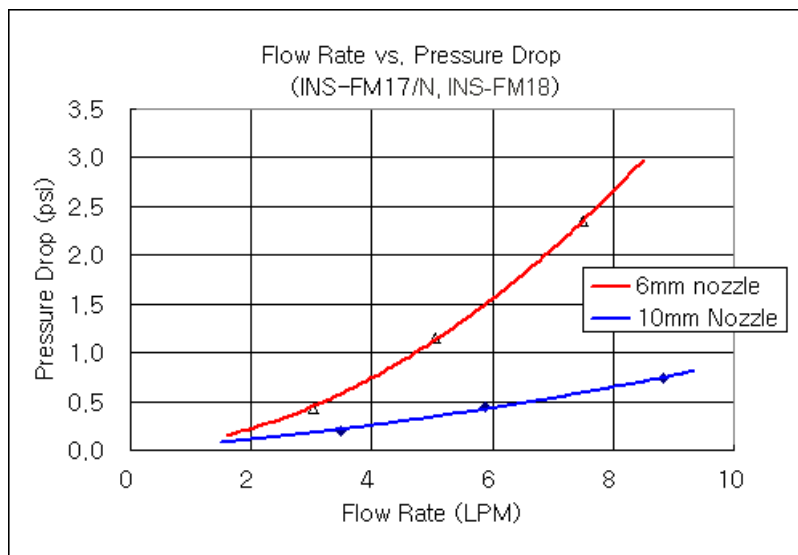
INS-FM17N Coolant Flow Meter, Reed Switch

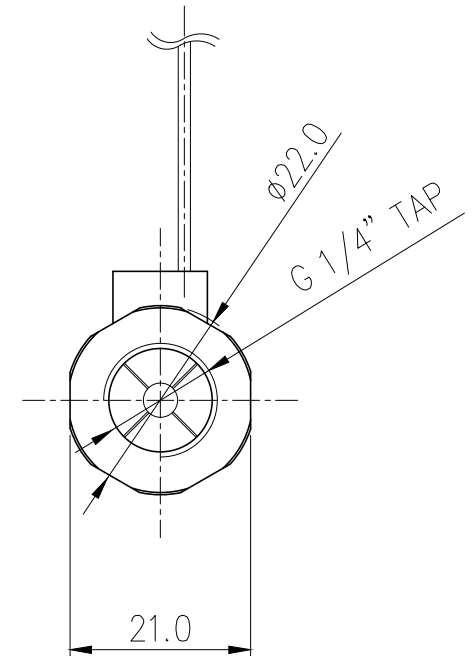
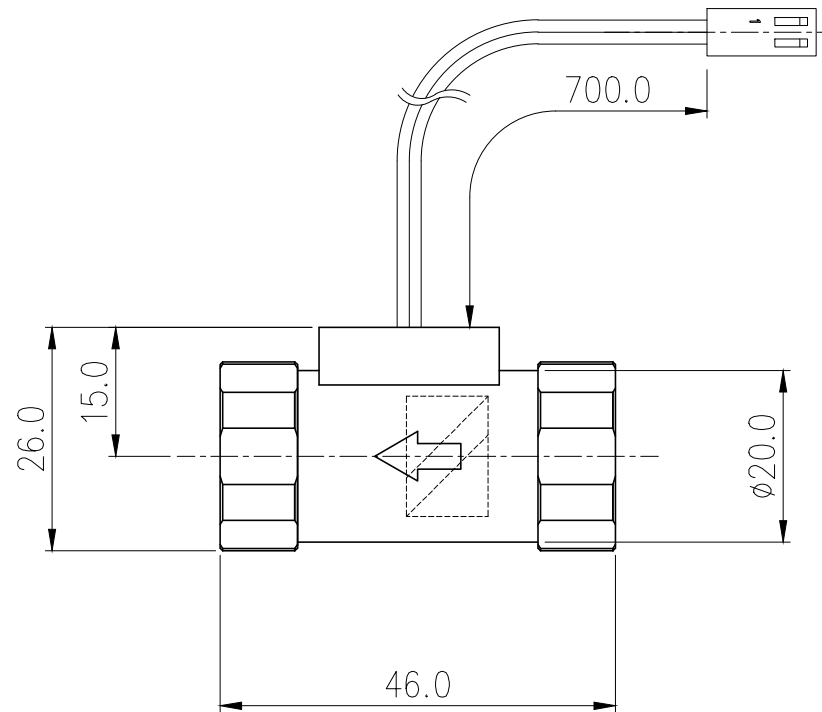
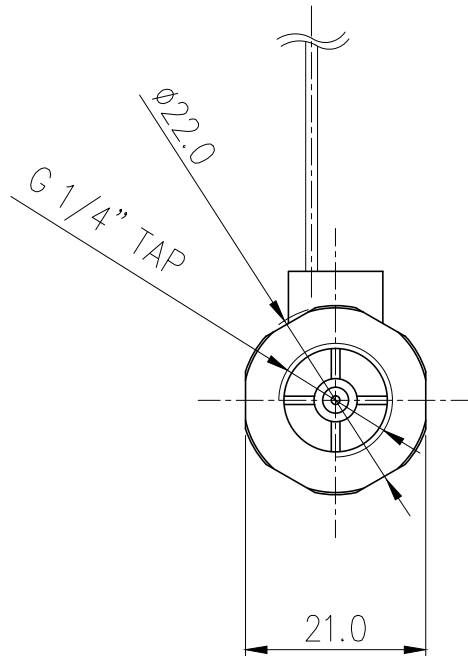
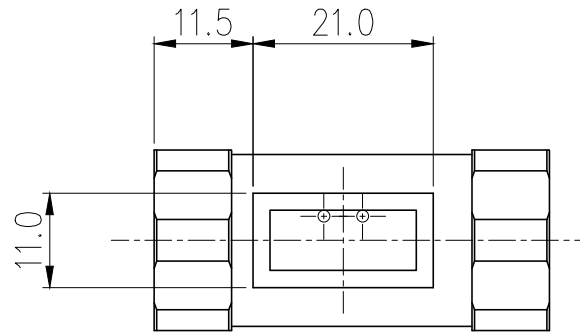



Koolance's inline flow meters provide electronic indication of real-time coolant flow rate. This model uses a reed switch to detect impeller rotation. G 1/4 BSPP fitting threads, and primary materials are nickel-plated brass and acrylic. Approximate read range is 1.0-20 LPM (15.6-317 GPH). Wire length is about 28" (70cm). It is recommended to keep current through the flow meter at 10mA or less to prevent damage.

Flow Meters	
Accuracy (Approx.)	+/-5%
Flow Rate Range	1.0-20 LPM (15.6-317 GPH)
General	
Weight	0.13 lb (0.06 kg)
Fitting Thread	G 1/4 BSPP
Max Pressure Tolerance @ 25° C	2kgf/cm2 (28.5psi)
Max Temperature Tolerance	70° C (158° F)
Min Storage Temperature (*No Freezing)	0° C (32° F)
Wetted Materials	Nickel-Plated Brass, PTFE, PMMA Acrylic, Stainless Steel, POM Acetal, PBT, SmCo5







NO.		DESCRIPTION				MATER'L		QUANTITY		REMARKS	
						UNIT		MM		APPAR INS-FM17N	
						SCALE		N/S		TITLE Ass'y	
DATE		BY		BY		BY		APPRO BY			
04/12/2017		S.J.LEE								CODE NO.	
										DWG. NO.	