

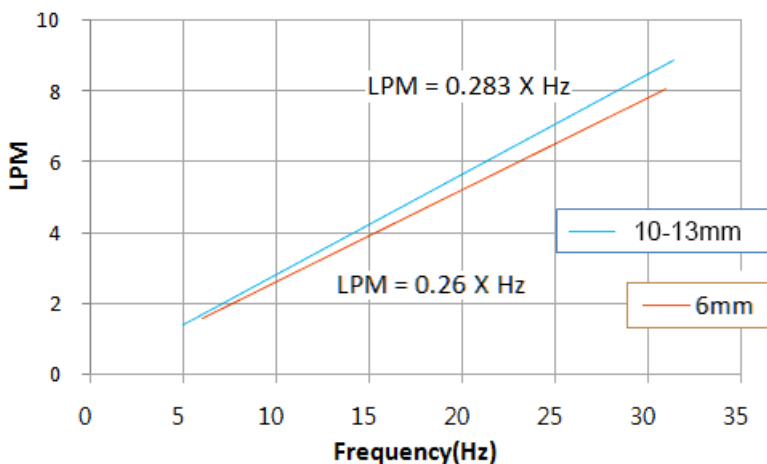
INS-FM18 Coolant Flow Meter, Stainless Steel, Reed Switch

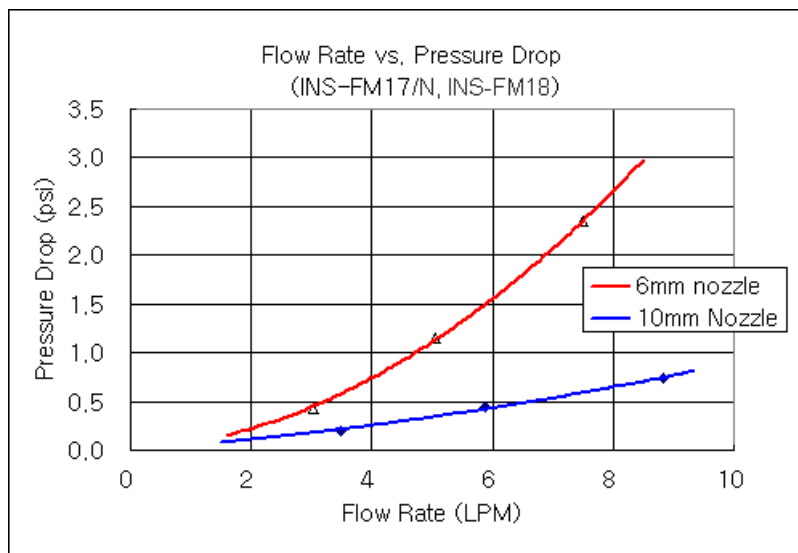


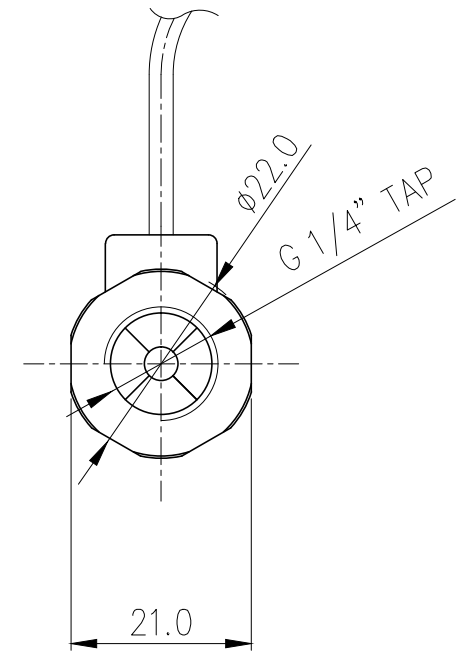
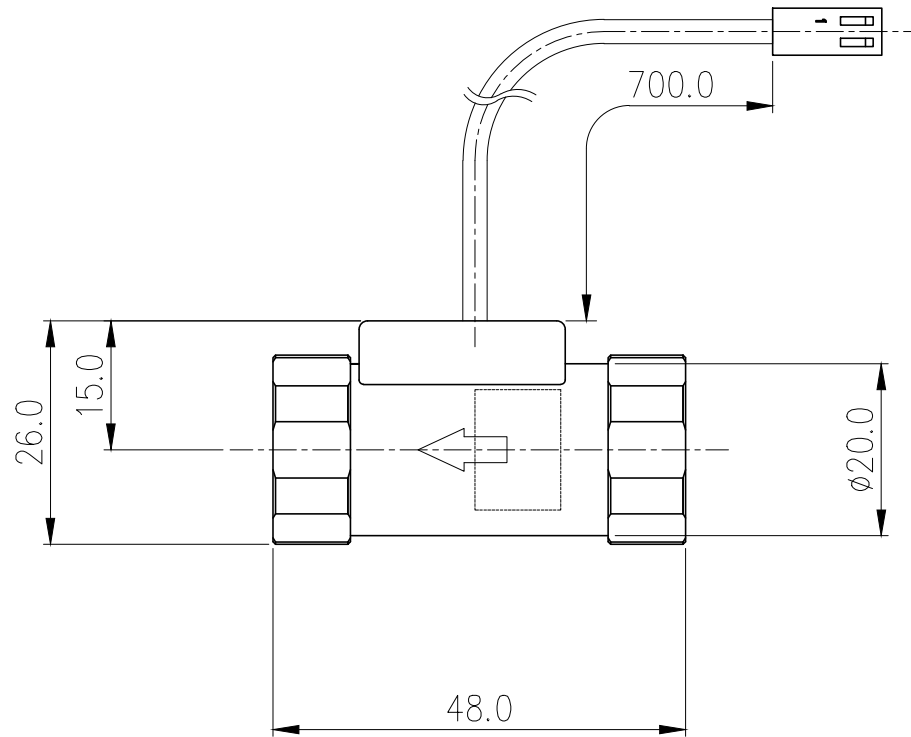
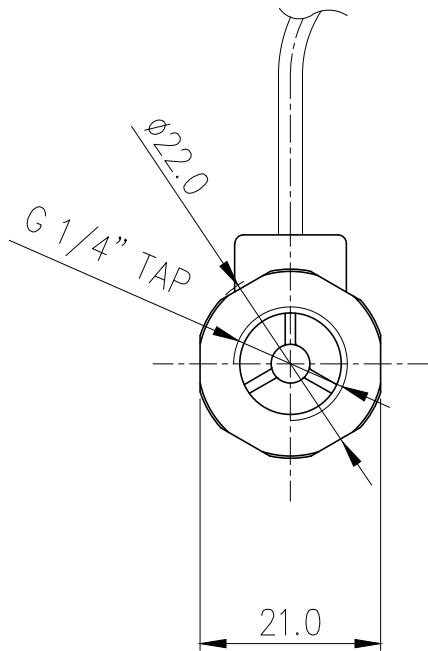
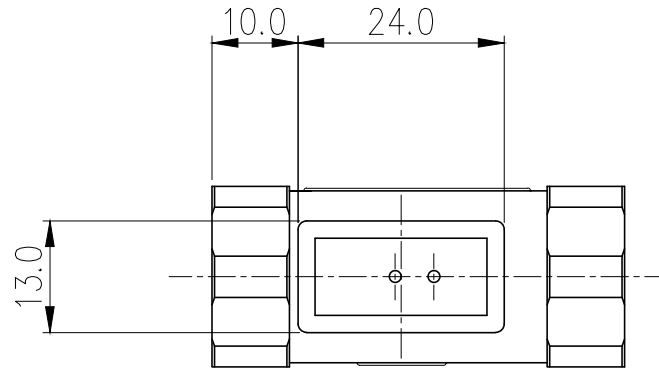
Koolance's inline flow meters provide electronic indication of real-time coolant flow rate. This model uses a reed switch to detect impeller rotation. G 1/4 BSPP fitting threads, and primary materials are stainless steel and nickel-plated brass. Approximate read range is 2.0-20 LPM (32-317 GPH). Wire length is about 28" (70cm). It is recommended to keep current through the flow meter at 10mA or less to prevent damage.


Flow Meters	
Accuracy (Approx.)	+/-5%
Flow Rate Range	2.0-20 LPM (32-317 GPH)
General	
Weight	0.18 lb (0.08 kg)
Fitting Thread	G 1/4 BSPP
Max Pressure Tolerance @ 25°C	10kgf/cm ² (142.2psi)
Max Temperature Tolerance	100°C (212°F)
Min Storage Temperature (*No Freezing)	0°C (32°F)
Wetted Materials	Nickel-Plated Brass, Stainless Steel, POM Acetal, SmCo5

Flow Rate vs. Pulse Frequency







NO.		DESCRIPTION			MATER'L		QUANTITY		REMARKS	
 KOOLANCE®					UNIT	MM	APPAR		INS-FM18	
					SCALE	N/S	TITLE Ass'y			
	BY	BY	BY	APPRO	BY	3RD ANGLE				
DATE						CODE NO.		DWG. NO.		
04/12/2017		S.J.LEE								