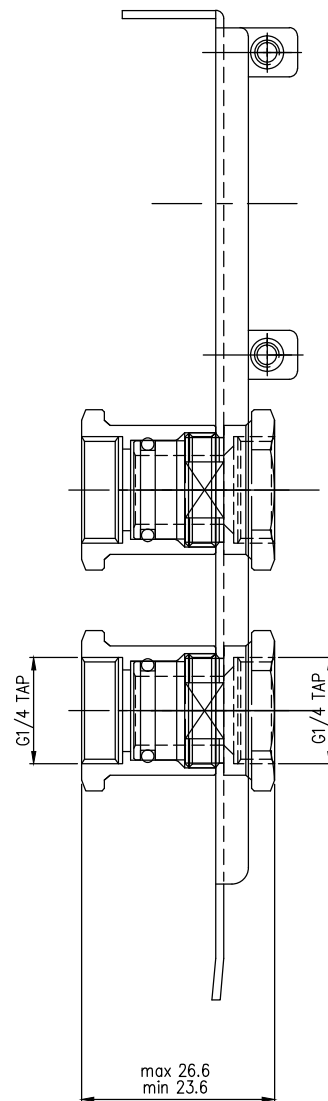


**Computer L-Bracket (Double Panel-Mount) G
1/4 BSPP Threads**

Dual panel-mounted socket threads for "internal/external" fittings on a computer chassis L-bracket. The female G 1/4 BSPP threaded couplings can be removed from the L-bracket and used as panel-mountable unions. Nickel-plated brass. This product may need to be temporarily disassembled during installation.

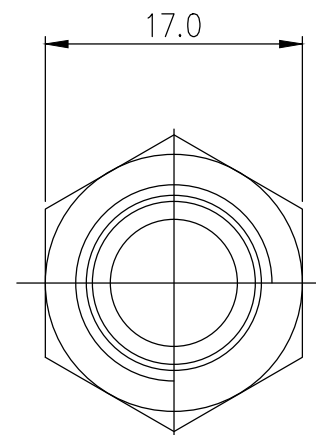
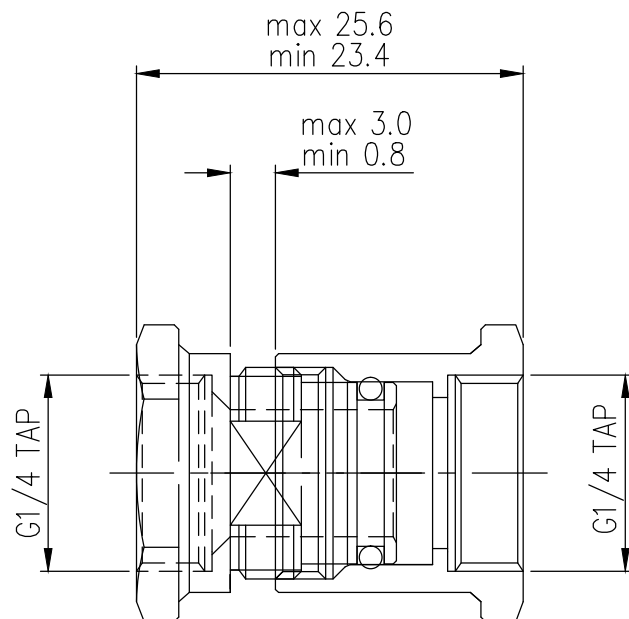
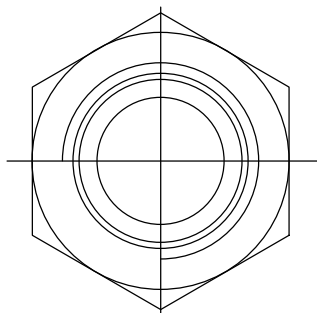
General

Weight	0.10 lb (0.05 kg)
--------	-------------------




REV	DATE	CONTENTS	APPD BY
REVISION			

NO.		DESCRIPTION			MATER'L		QUANTITY	REMARKS
KOOLANCE INC.						UNIT	MM	PART NO. BKT-PCI-G
		BY	BY	BY	APPRO BY	SCALE	N/S	TITLE
DATE						3RD ANGLE		
		song				CODE NO.		ITEM
								PAGE



REV	DATE	CONTENTS	APPD BY
REVISION			

NO.		DESCRIPTION			MATER'L		QUANTITY	REMARKS	
					UNIT	MM	PART NO. BKT-PCI-G		
		BY	BY	BY	APPROV BY	SCALE	N/S	TITLE	
DATE						3RD ANGLE			
		song				CODE NO.			
								ITEM	PAGE