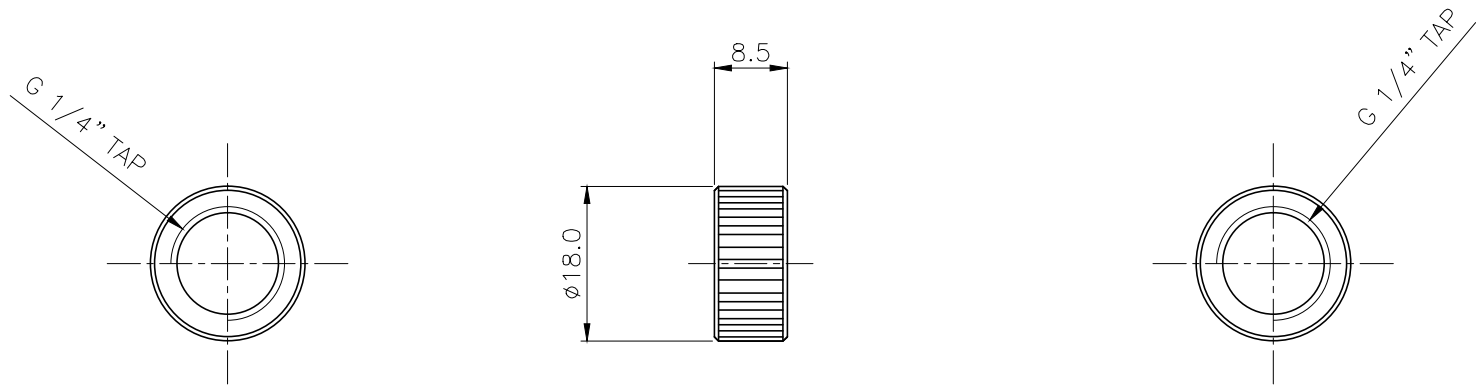





The Koolance Fitting Coupling Adapter provides a convenient coupler for converting between any two G 1/4 BSPP (parallel) thread fittings. Easily adapt any tubing diameter to another, for example, or a swiveling connection to a hose barb.

NOTE: Koolance G 1/4 BSPP (parallel) thread fittings are recommended for this product due to their short thread length (4mm). Other brands of G 1/4 BSPP fittings may need trimming to fit this product.

General	
Weight	0.03 lb (0.01 kg)
Fitting Thread	G 1/4 BSPP
Max Pressure Tolerance @ 25 °C	15kgf/cm2 (213.4psi)
Max Temperature Tolerance	120 °C (248 °F)
Wetted Materials	Brass



NO.	DESCRIPTION				MATER'L		QUANTITY	REMARKS	
					UNIT	MM	APPAR ADT-XFF		
					SCALE	N/S	TITLE Ass'y		
	BY	BY	BY	APPRO	BY				
DATE						3RD ANGLE			
04/06/2017	S.J.LEE					CODE NO.			
						DWG. NO.			