

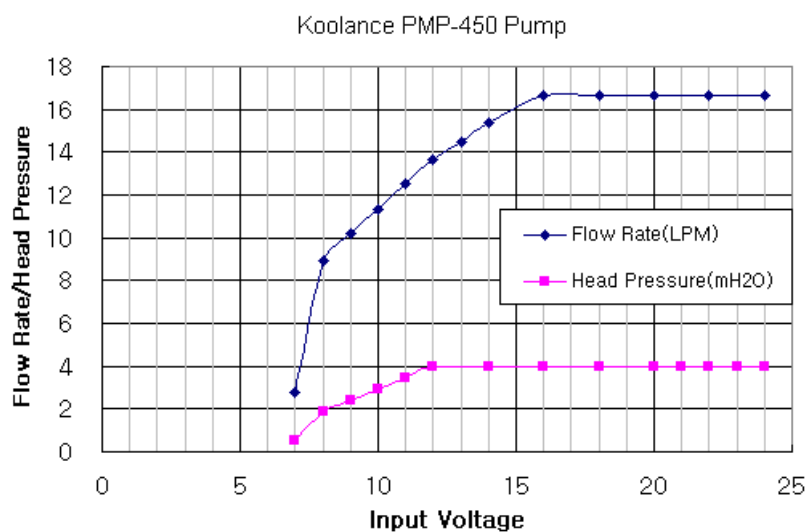
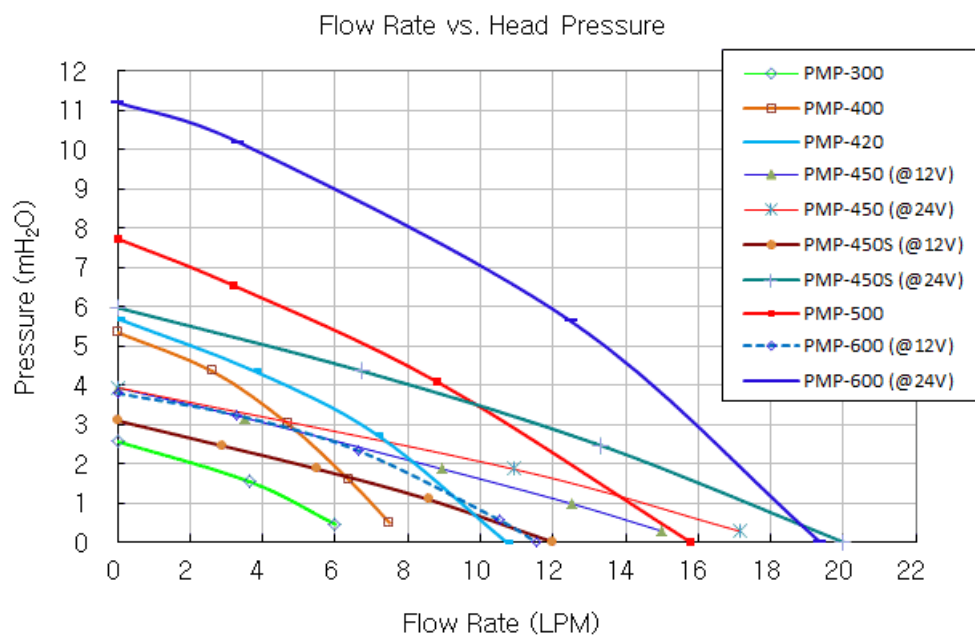


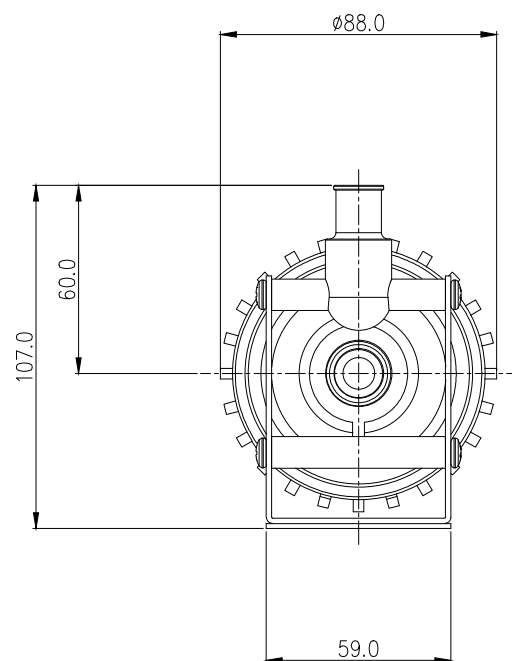
The Koolance PMP-450 is a reliable high-flow pump with built-in speed control knob. It handles external control throttling better than the [PMP-450S](#).

- Maximum Flow Rate: 15L/min (4.0 gal/min) @ 12V, 17.5L/min (4.6 gal/min) @ 24V
- Maximum Head Pressure: 3.9m (12.8ft) @ 12-24V
- Motor: Brushless DC, electronically commutated, spherical motor
- Power: 8-24 VDC, 3-35W, 0.30-1.50A
- Startup Voltage: 9 to 13.2 VDC
- Maximum System Pressure: 3.5 kgf/cm² (50 PSI)
- Maximum Temperature: 60 °C (140 °F)
- Electrical Connector: 4-pin Molex power supply connection + 3-pin (single lead) tach
- Hose Connections: 13mm (1/2in) ID hose barbs
- Wetted Materials: PPO, Carbon/Allumina Ceramic, EPDM or Viton, 316 SS
- Noise: Less than 40dBA
- Weight: 862g (1.9lbs)
- MTBF 50k hours

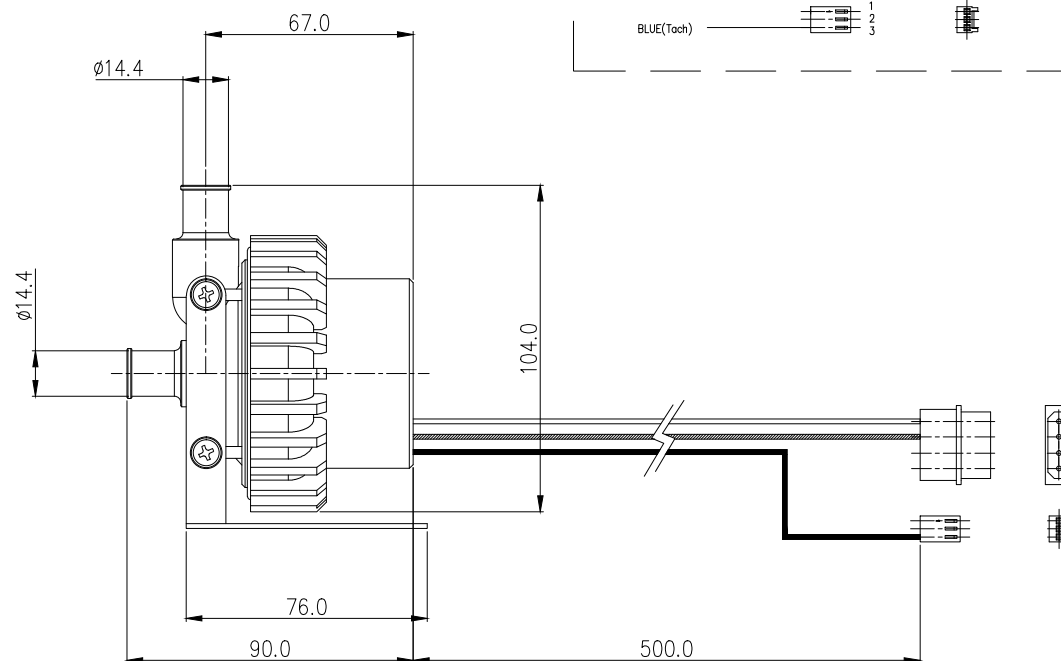
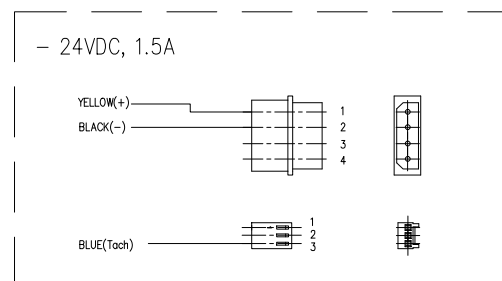
General	
Weight	1.20 lb (0.54 kg)
Max Pressure Tolerance @ 25 °C	3.5kgf/cm ² (50 psi)
Max Temperature Tolerance	60 °C (140 °F)
Wetted Materials	PPO, Carbon/Allumina Ceramic, EPDM or Viton, 316 SS
Pumps	
Expected Lifetime	50,000 hrs. MTBF
Max Flow Rate	15L/min (4.0GPM) @ 12V, 17.5L/min (4.6GPM) @ 24V
Max Power	25W @ 12V, 35W @ 24V
Max Static Head	3.9m (12.8ft) @ 12-24V
Native Hose Connection	Barbs for ID 13mm (1/2in)
Speed Knob	yes
Tachometer	yes


General	
Type	Magnetic Centrifugal
Voltage	8-24 VDC






- < 4 pin CONNECTOR >
 – Housing : ALEX 6060-04 (or Equivalent)
 – Terminal : ALEX 62T (or Equivalent)
- < 3pin CONNECTOR >
 – Housing : Molex 5051-03 (or Equivalent)
 – Terminal : Molex 5159 (or Equivalent)



					
REV	DATE	CONTENTS	REVD BY	CHKD BY	APPD BY
REVISION					

NO.		DESCRIPTION			PART NO.		QTY.		REMARKS	
 KOOLANCE®					UNIT	MM	ITEM Pump			
					SCALE	N/S	TITLE Assy			
					3RD ANGLE					
DATE		DRAWN BY	BY	BY	APPRO BY	KK CODE NO. PMP-450		DRAWING NO. —		REV
MAR.25.2021	S.J.LEE				J.S.PARK					—
										—