

CTR-KSM100 Controller with Hardware and Software Interfaces



CTR-KSM100 is a liquid cooling system controller with both hardware and software interfaces. It incorporates a 2-line OLED display for user control and feedback, and a USB port for configuration and logging via the [Koolance System Monitor](#) application.

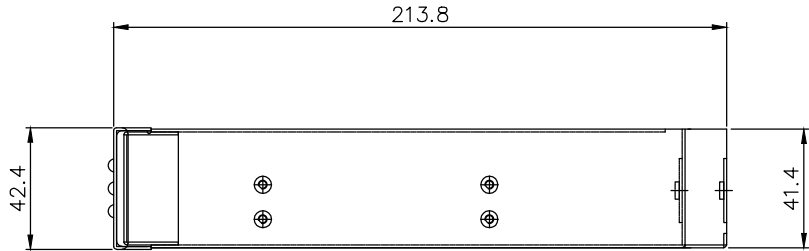
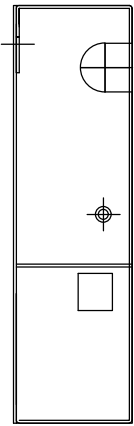
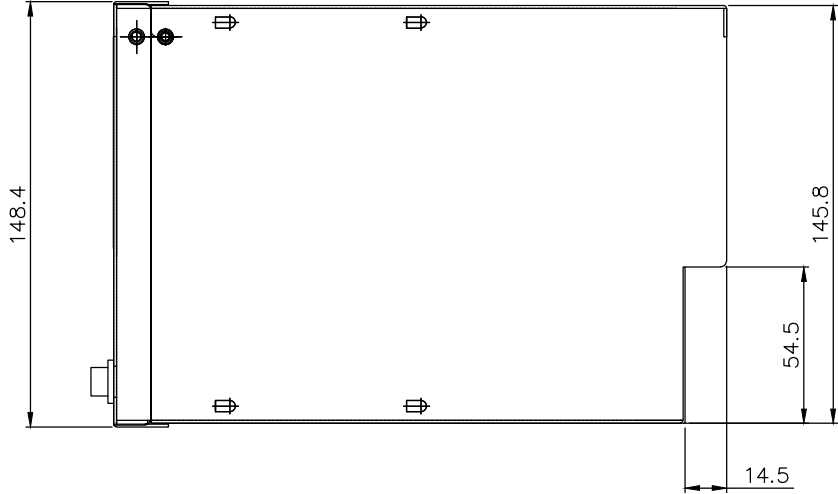
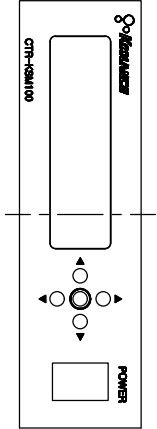
Supported features are listed below. Please note: temperature features and set-point control requires a [K-type thermocouple](#) or [10K thermistor](#) (not included).


- Control 12VDC radiator fans using a temperature set-point or constant speed setting (max 2A per connector)
- Control a 12VDC (max 36W) or 24VDC (max 50W) pump with 10 speed levels
- Show coolant flow rate in LPM or GPM (optional Koolance [flow meter](#) required)
- Show normal or low reservoir coolant level (optional Koolance [level sensor](#) required)
- Show pump and fan RPM
- Set alarm and trigger relay points based on: temperature, pump speed, fan speed, flow rate, and coolant level
- Select only the values you want shown on the front OLED display
- Requires 12VDC input power, such as Koolance's [PSU-ALX12V](#) (DC power terminal cable is included)

The CTR-KSM100 has four fan outputs. To connect more than four fans, simply add them together with a [fan wiring harness](#).

CAUTION: Do not operate components at voltages which exceed their specifications. Running a 12V-max pump at 24V from the speed controller can damage the pump.

General	
Weight	1.50 lb (0.68 kg)



NO.		DESCRIPTION					MATER'L		QUANTITY	REMARKS
 KOOLANCE®							UNIT	MM	PART NO.	CTR-KSM100
							SCALE	N/S	TITLE Ass'y	
DATE		BY	BY	BY	APPRD BY	3RD ANGLE				
ys.shin						DWG. NO.		ITEM		