

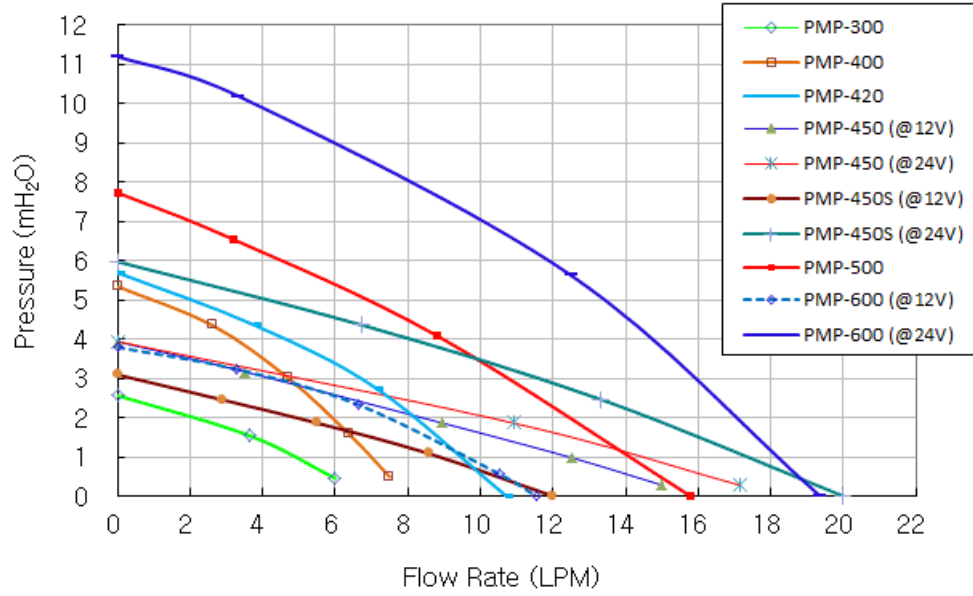


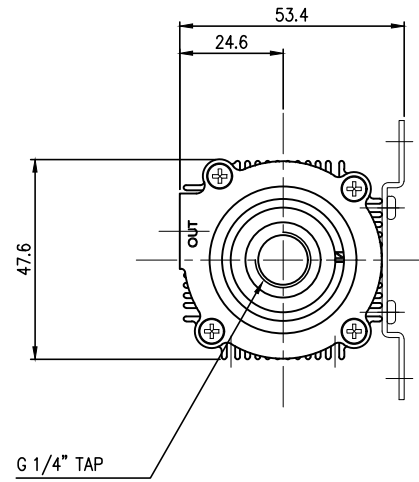
The Koolance PMP-420 is a small size pump (about 48mm x 48mm x 69mm) with good output. A mounting bracket is included.

- Maximum Flow Rate: 11L/min (2.9 gal/min)
- Maximum Head Pressure: 5.8m (19ft)
- Motor: Brushless DC
- Power Consumption (at max): 17W
- Voltage Range: 6 to 12 VDC
- Maximum Temperature: 60°C (140°F)
- Electrical Connector: 3-pin fan header with tachometer speed signal
- Hose Connections: G 1/4 BSPP Threads
- Noise: Less than 50dBA
- Weight: 284g (0.6lbs)

General	
Weight	0.60 lb (0.27 kg)
Fitting Thread	G 1/4 BSPP
Max Pressure Tolerance @ 25°C	1.5kgf/cm <sup>2</sup> (21.3psi)
Max Temperature Tolerance	60°C (140°F)
Wetted Materials	PPE, Carbon, Ceramic, EPDM, ABS, POM, Ferrite
Pumps	
Max Flow Rate	11L/min (2.9GPM)
Max Power	17W
Max Static Head	5.8m (19ft)
Native Hose Connection	G 1/4 BSP Threads
Speed Knob	no
Tachometer	yes
Type	Magnetic Centrifugal
Voltage	6-12 VDC

Flow Rate vs. Head Pressure

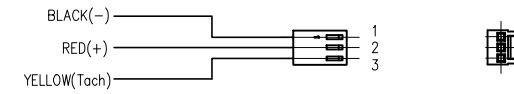




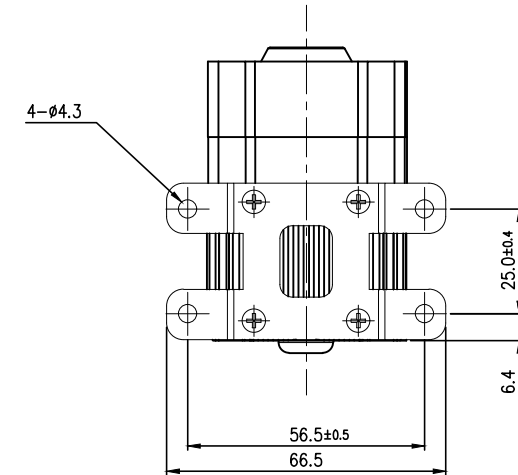
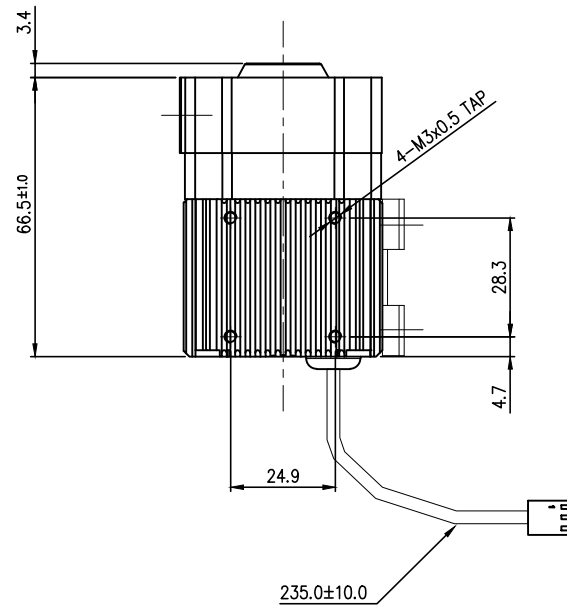
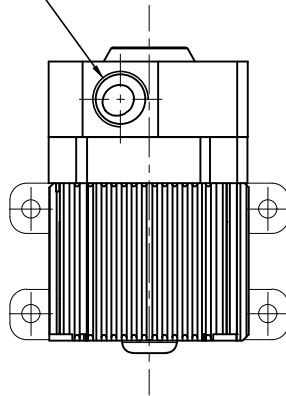
### < 3pin CONNECTOR >


- Housing : Molex 5051-03 (or Equivalent)
- Terminal : Molex 5159 (or Equivalent)

- 12VDC, 1.4A



G 1/4" TAP



NO.	DESCRIPTION				MATER'L	QUANTITY	REMARKS
					UNIT	MM	PART NO. PMP-420
					SCALE	N/S	TITLE
DATE	BY	BY	BY	APPRO BY	3RD ANGLE		REV2.0 Ass'y
	S.J.LEE				DWG. NO.		ITEM