

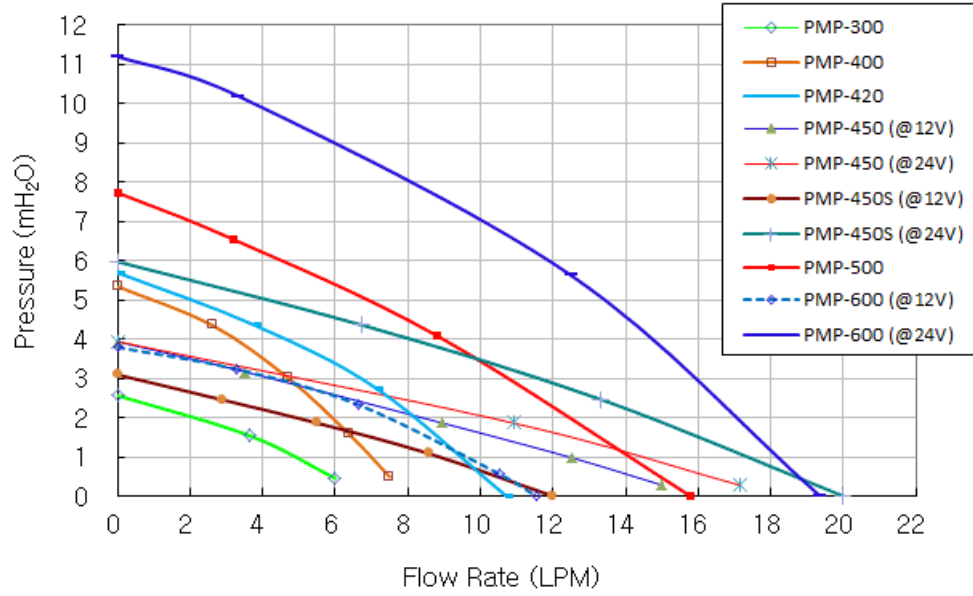


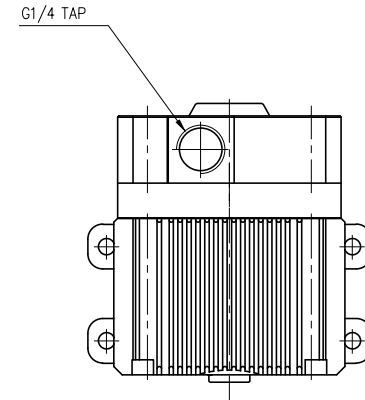
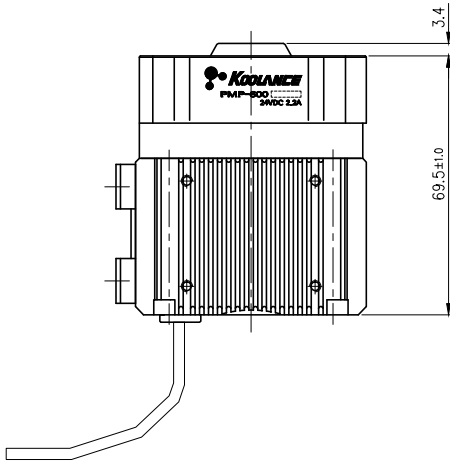
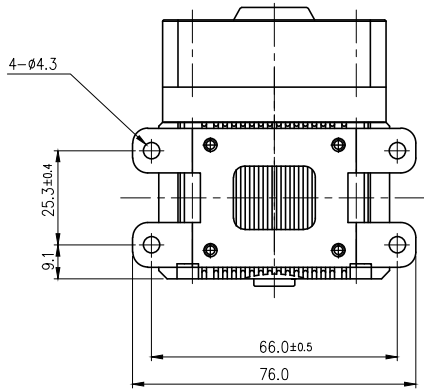
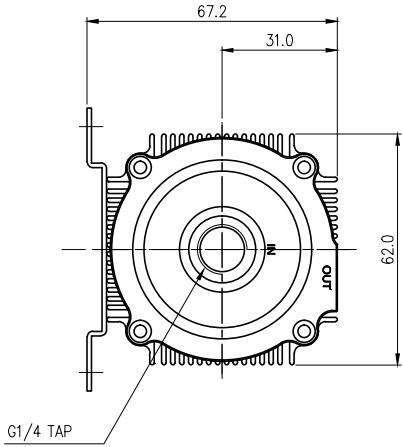
PMP-600 provides the highest overall output among Koolance's 24V pumps. A mounting bracket is included.


- Maximum Flow Rate: 20L/min (5.3 gal/min)
- Maximum Head Pressure: 11m (36ft)
- Motor: Brushless DC
- Power Consumption (at max): 52W
- Voltage Range: 8 to 24 VDC
- Maximum Temperature: 75°C (167°F)
- Electrical Connector: 4-pin Molex power supply connection + 3-pin (single lead) tach
- Hose Connections: G 1/4 BSPP Threads
- Noise: Less than 50dBA
- Weight: 454g (1lbs)

General	
Weight	1.20 lb (0.54 kg)
Fitting Thread	G 1/4 BSPP
Max Pressure Tolerance @ 25°C	1.5kgf/cm2 (21.3psi)
Max Temperature Tolerance	75°C (167°F)
Wetted Materials	PPE, Carbon, Ceramic, EPDM, ABS, POM, Ferrite
Pumps	
Expected Lifetime	30,000 hrs. MTBF
Max Flow Rate	20L/min (5.3 gal/min)
Max Power	52W
Max Static Head	11m (36ft)
Native Hose Connection	G 1/4 BSP Threads
Speed Knob	no
Tachometer	yes
Type	Magnetic Centrifugal
Voltage	8-24 VDC

Flow Rate vs. Head Pressure





NO.		DISCRIPTION				MATER'L		QUANTITY	REMARKS
 KOOLANCE®						UNIT	MM	ITEM PMP-600	
						SCALE	N/S	TITLE	
		BY	BY	BY	APPRO BY	3RD ANGLE		Ass'y	
DATE									
		S.J.LEE				CODE NO.		DWG. NO.	
								PAGE	