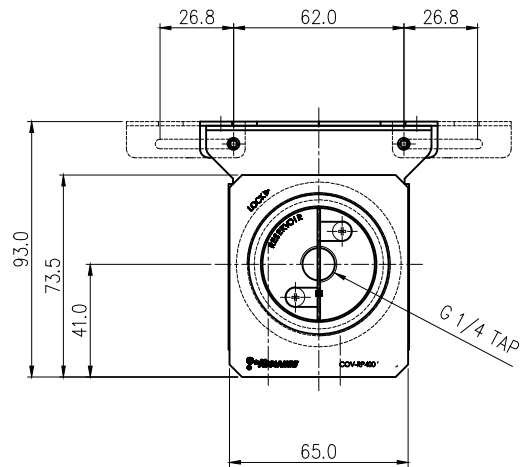




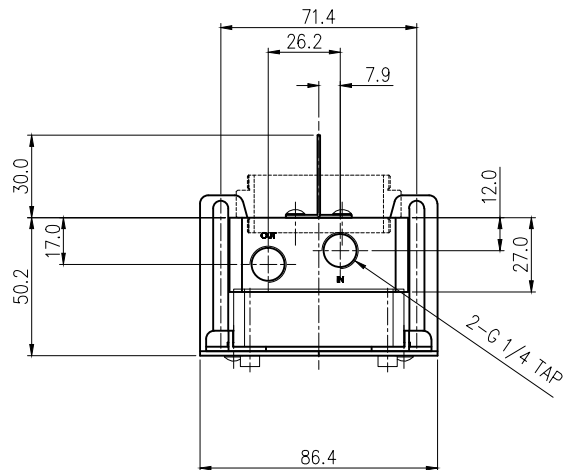
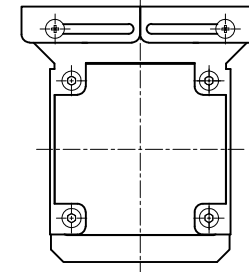
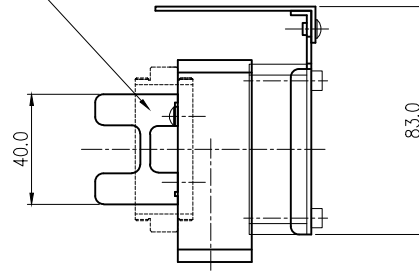
COV-RP400 is an acetal fitting and reservoir base for the Koolance [PMP-400](#) pump. Pump, reservoir, and fittings are sold separately. Along with enabling the use of any G 1/4 BSPP (parallel) thread fitting style and diameter, it allows flow to be specifically directed for increased pump performance or broader chassis integration. Fitting base, mounting bracket, coupler for 60mm OD reservoirs, socket plug, and mounting hardware is included.

Koolance [60mm OD](#) acrylic reservoir bodies can be directly connected to the COV-RP400 by using the included reservoir coupler. For [80mm OD](#) reservoirs, use separate reservoir thread adapter [TNK-CNT50T70](#).


General	
Weight	0.80 lb (0.36 kg)
Fitting Thread	G 1/4 BSPP
Max Pressure Tolerance @ 25 °C	2kgf/cm2 (28.5psi)
Max Temperature Tolerance	80 °C (176 °F)
Wetted Materials	Nickel-Plated Brass, POM Acetal, Stainless Steel, EPDM



SUS-WALL



△					
REV	DATE	CONTENTS	REVD BY	CHKD BY	APPD BY
REVISION					

NO.		DESCRIPTION			MATER'L		QUANTITY		REMARKS		
					UNIT	MM	APPAR COV-RP400				
					SCALE	N/S	TITLE SUS-wall version Ass'y				
					3RD ANGLE						
DATE		BY	BY	BY	APPRO BY	REF. NO.		DWG. NO.			
		S.J.LEE									