

## QD2 Female Quick Disconnect No-Spill Coupling, Male Threaded G 1/4 BSPP

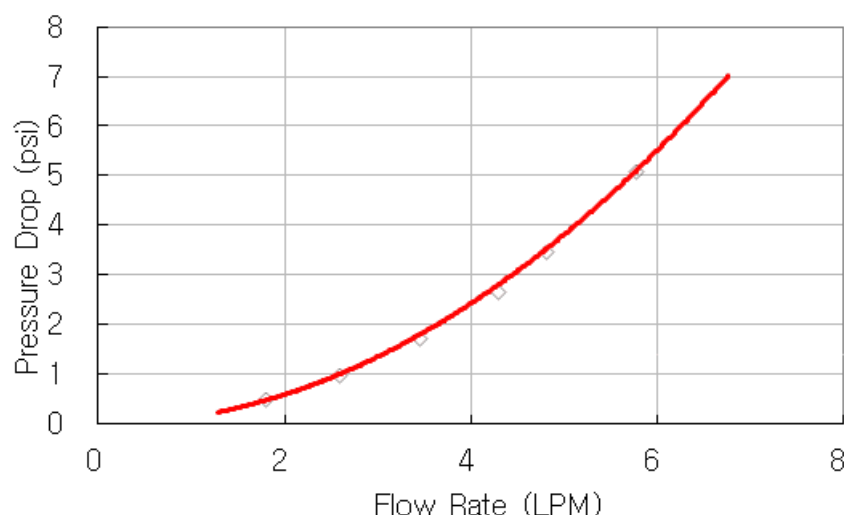


Koolance patented quick disconnect no-spill coupling with automatic shutoff. G 1/4 BSPP (parallel) thread male fitting for screwing directly into a water block or other component. It will only fit a Koolance QD2 male quick disconnect.

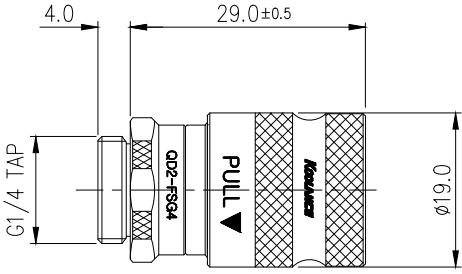
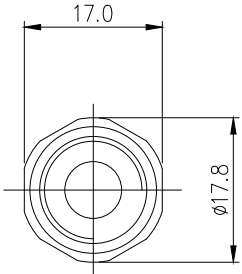
After pulling the ring on the female QDC side, the quick-disconnect fittings will separate. Liquid on both sides will be automatically obstructed with approximately 0.2ml freed. Coolant volume lost upon disconnection will rise with internal pressure higher than 0.5kgf/cm<sup>2</sup> (7psi).

General	
Weight	0.08 lb (0.04 kg)
Fitting Thread	G 1/4 BSPP
Max No-Spill Pressure	0.5kgf/cm <sup>2</sup> (7psi)
Max Pressure Tolerance @ 25°C	8kgf/cm <sup>2</sup> (113.8psi) connected, 5kgf/cm <sup>2</sup> (71psi) disconnected
Max Temperature Tolerance	80°C (176°F)
Min Pressure Tolerance @ 25°C	-1.0kgf/cm <sup>2</sup> (-14psi)
Min Storage Temperature (*No Freezing)	-20°C (-4°F)
Seal Material	EPDM (Water/Glycol Liquids)
Wetted Materials	Nickel-Plated Brass, Stainless Steel, EPDM


QD2 (One Pair)







REV	DATE	CONTENTS	APPD BY
REVISION			

NO.	DESCRIPTION				MATER'L		QUANTITY	REMARKS
 <b>KOOLANCE®</b>					UNIT	MM	PART NO.	QD2 SHORT
					SCALE	N/S	TITLE	
	BY	BY	BY	APPRO BY	3RD ANGLE		QD2-FSG4	
DATE					DWG. NO.		ITEM	
		SONG						