

QD3 Female Quick Disconnect No-Spill Coupling, Panel Barb for ID 13mm (1/2in)

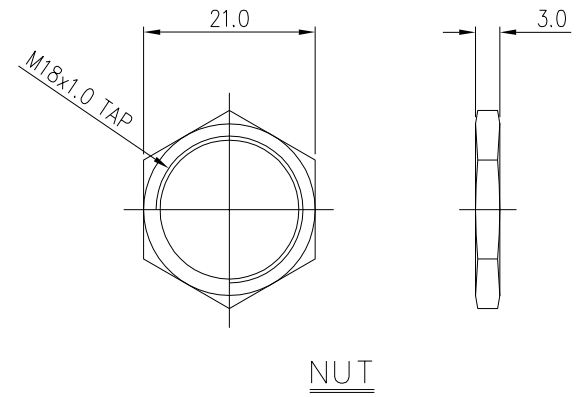
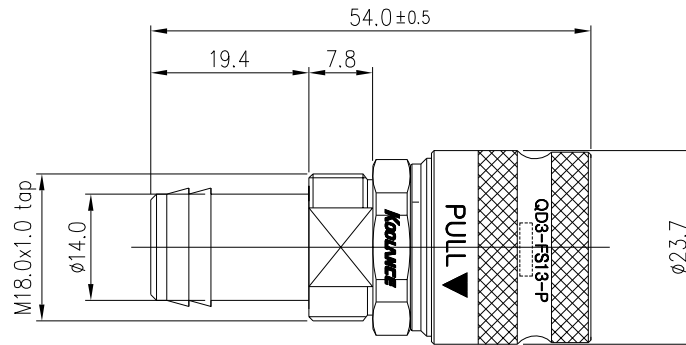
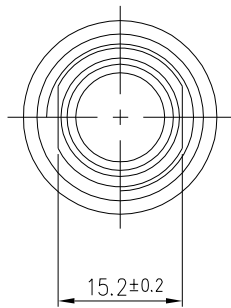


Koolance patented quick disconnect no-spill coupling with automatic shutoff. 13mm (1/2in) ID female panel-mountable hose barb with clamp for 16mm OD (5/8in). It will only fit a Koolance QD3 male quick disconnect.

After pulling the ring on the female QDC side, the quick-disconnect fittings will separate. Liquid on both sides will be automatically obstructed with approximately 0.2ml freed. Coolant volume lost upon disconnection will rise with internal pressure higher than 0.5kgf/cm² (7psi).

General	
Weight	0.21 lb (0.10 kg)
Max No-Spill Pressure	0.5kgf/cm ² (7psi)
Max Pressure Tolerance @ 25° C	8kgf/cm ² (113.8psi)
Max Temperature Tolerance	80° C (176° F)
Min Pressure Tolerance @ 25° C	-1.0kgf/cm ² (-14psi)
Min Storage Temperature (*No Freezing)	-20° C (-4° F)
Seal Material	EPDM (Water/Glycol Liquids)
Wetted Materials	Brass, Nickel Plating, Stainless Steel, EPDM





REV	DATE	CONTENTS	REVD BY	CHKD BY	APPD BY
REVISION					

NO.		DISCRIPTION					MATER'L		QUANTITY	REMARKS				
KOOLANCE INC.		<table><tr><td>DECIMAL PLACES</td><td>INCHES</td><td>MILLIMETRES</td></tr><tr><td>.XXX .XX .X</td><td>±.005 ±.010 ±.020</td><td>±0.1 ±0.3 ±0.5</td></tr></table>			DECIMAL PLACES	INCHES	MILLIMETRES	.XXX .XX .X	±.005 ±.010 ±.020	±0.1 ±0.3 ±0.5	UNIT	MM	ITEM QD3	
					DECIMAL PLACES	INCHES	MILLIMETRES							
					.XXX .XX .X	±.005 ±.010 ±.020	±0.1 ±0.3 ±0.5							
SCALE	N/S	TITLE												
DATE	BY	BY	BY	APPRO BY	ANGULAR DIMENSIONS		3RD ANGLE		QD3-FS13-P					
					XX" XX.X"		±0.5" ±0.1"							
	SONG				SURFACE ROUGHNESS		SURFACE SURFACE .63 1.6							