

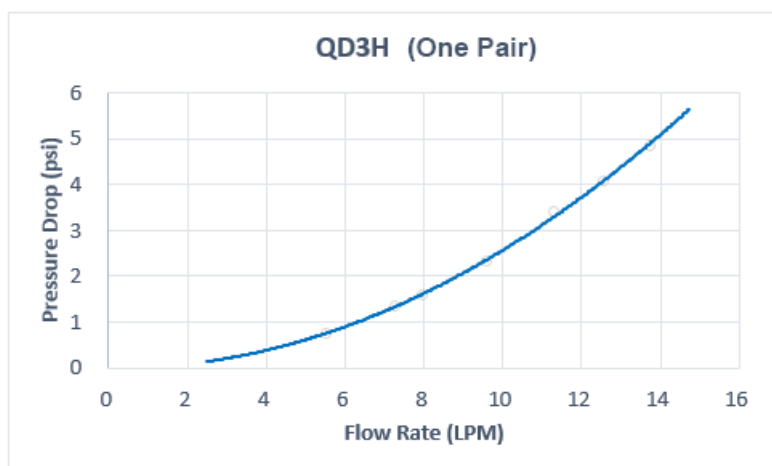
QD3H Female Quick Disconnect No-Spill Coupling, Panel Barb for ID 10mm (3/8in)

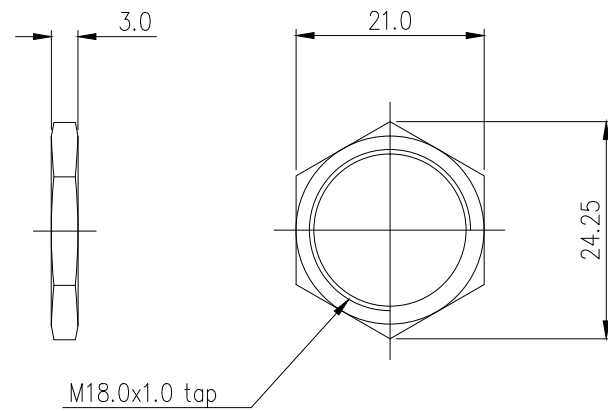
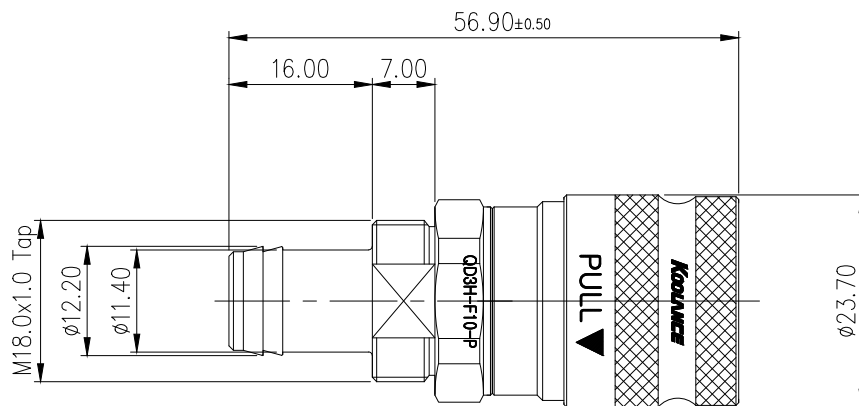
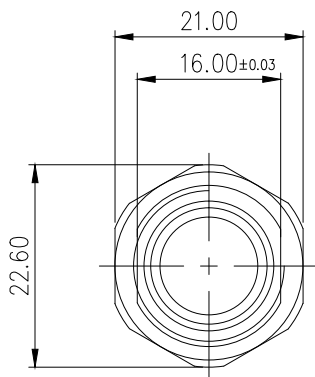


Koolance patented quick disconnect no-spill coupling with automatic shutoff. 10mm (3/8in) ID female panel-mountable hose barb with clamp for 13mm (1/2in) OD. It will only fit a Koolance QD3H male quick disconnect.

After pulling the ring on the female QDC side, the quick-disconnect fittings will separate. Liquid on both sides will be automatically obstructed with approximately 0.2ml freed. Coolant volume lost upon disconnection will rise with internal pressure higher than 10kgf/cm² (142psi).


General	
Weight	0.20 lb (0.09 kg)
Max No-Spill Pressure	10kgf/cm ² (142psi)
Max Pressure Tolerance @ 25° C	12kgf/cm ² (170.7psi)
Max Temperature Tolerance	80° C (176° F)
Min Pressure Tolerance @ 25° C	0.0kgf/cm ² (0psi)
Min Storage Temperature (*No Freezing)	-20° C (-4° F)
Seal Material	EPDM (Water/Glycol Liquids)
Wetted Materials	Brass, Nickel Plating, Stainless Steel, EPDM





NUT DIMENSION

REV	DATE	CONTENTS	APPD BY
REVISION			

NO.		DESCRIPTION			MATER'L		QUANTITY	REMARKS
 KOOLANCE®					UNIT	MM	PART NO. QD3H-F10-P	
<div><div>DATE</div><div>BY</div><div>BY</div><div>BY</div><div>APPRO BY</div></div>					SCALE	N/S	TITLE	
					3RD ANGLE		DIMENSION	
song					DWG. NO.			
							QD3H	