

## RFS-500 Coolant Flush and Refill Station



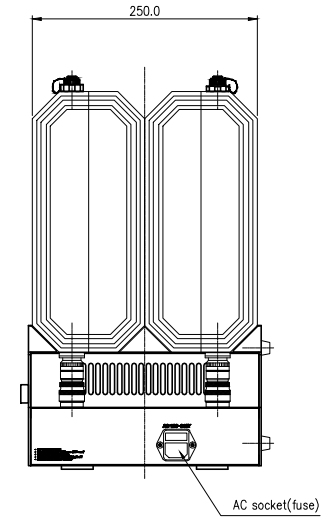
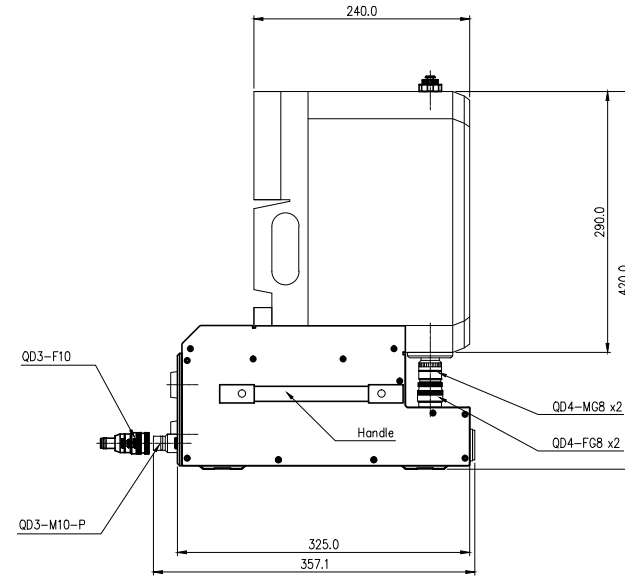
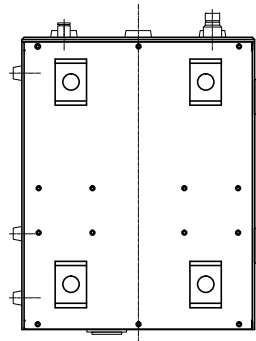
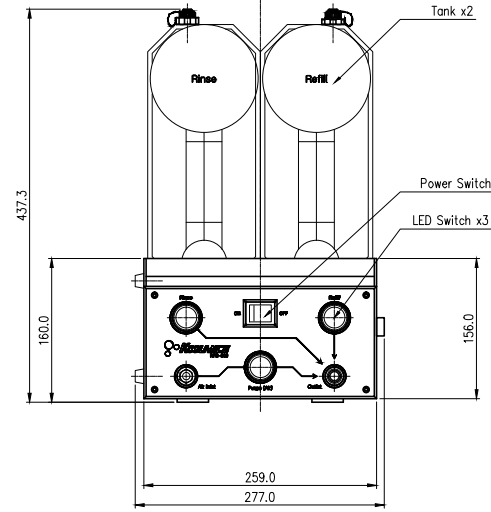
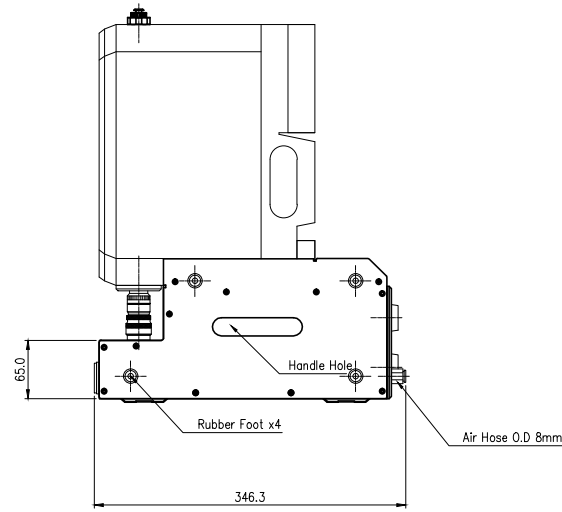
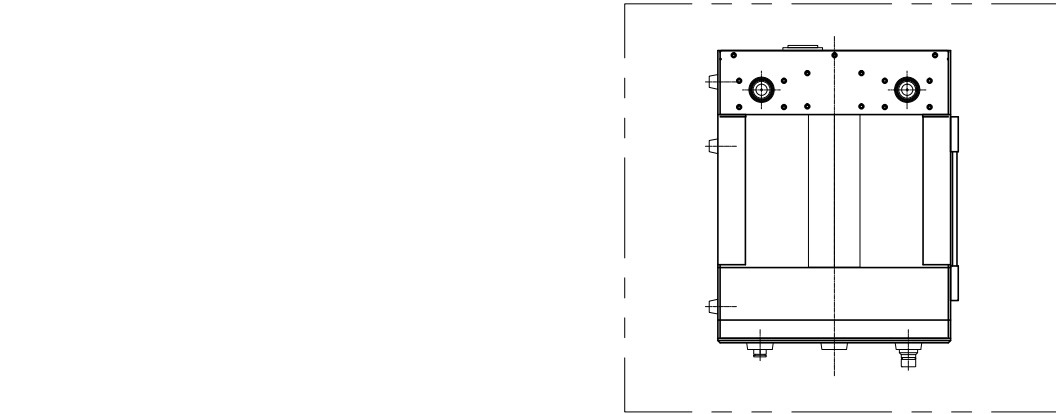
RFS-500 is a high volume coolant flushing and refilling unit, designed to speed the assembly and service of liquid cooling equipment. Two 6L (1.6 gal) containers for rinse and refill liquids attach to the RFS-500 using Koolance [QD3](#) series non-spill quick connect couplings. Liquid from other sources can be supplied through the same couplings by removing the containers. An 8mm (5/16in) OD inlet is provided for optionally purging or drying the cooling system with an air compressor (not included).

Inside, each liquid source is handled by separate Koolance [PMP-500](#) pumps. Front-facing push buttons control fluid movement with solenoid valves, which illuminate during use.

The RFS-500 has one outlet comprised of a Koolance QD3 male quick disconnect. A female [QD3](#) fitting should be purchased to connect with the cooling system being serviced. (Please note Koolance offers [tubing adapters](#) for other sizes.)

- Input power: 100-240VAC, 50-60Hz
- Power consumption: 130VA max (75W)
- Maximum coolant temperature: 50 °C (122 °F)
- Outlet pump pressure: 7.4 mH<sub>2</sub>O (10.5psi)
- Maximum pump flow rate: <16L/min (4.2 gal/min)
- Maximum air inlet pressure: 5 kgf/cm<sup>2</sup> (71psi)
- Wetted materials: PE, PP, PVC, EPDM, nickel-plated brass, SUS, POM acetal

General	
Weight	19.40 lb (8.80 kg)



NO.		DISCRIPTION				MATER'L		QUANTITY	REMARKS	
<i>KOOLANCE INC.</i>		DECIMAL PLACES		INCHES	MILLIMETRES	UNIT	MM	ITEM	RFS-500	
		.XXX .XX .X		±.005 ±.010 ±.020	±0.1 ±0.3 ±0.5	SCALE	N/S	TITLE	ASS'Y	
		ANGULAR DIMENSIONS				3RD ANGLE				
DATE		BY	BY	BY	APPRO	BY	CODE NO.	DWG. NO.		PAGE
03.03.2015		S.J.LEE								