



The RP-1250 is a combined reservoir and pump unit which fits into a single 5.25" (CD) bay. Featuring the powerful Koolance [PMP-400](#) pump, it also includes temperature monitoring, a front display, reservoir, pump & fan speed control, and rear G 1/4in threaded fitting sockets. This unit incorporates all-new Koolance electronics, with a 2-line OLED display for deeper user control and feedback.

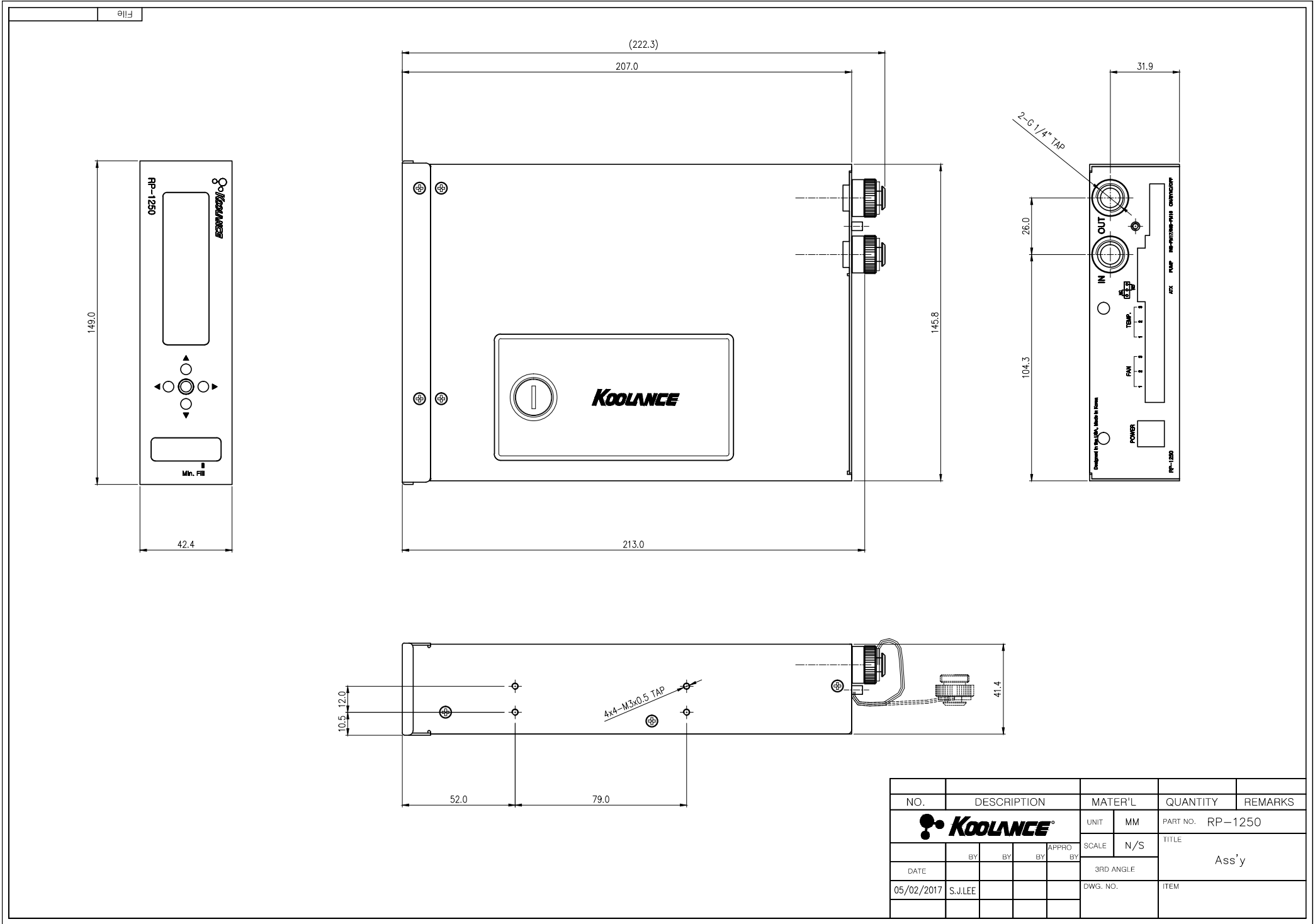
#### Features:


- Configure a dynamic fan ramp based on min/max temperature set points
- Show flow rate in LPM or GPM (optional Koolance [flow meter](#) required)
- Show pump and fan RPM
- Select only the values you want displayed
- Adjust alarm and shutdown points independently for all temperature sensors (3 included)
- Controls a 12VDC pump with 10 user levels up to 2A
- Fan output up to 2A on each connector
- Set the safety shutdown relay to normally-open or normally-closed

**IMPORTANT NOTE:** The pump should never be run dry. Always test this product with coolant.

The RP-1250 has three 3-pin fan outputs. To connect more fans, simply add them together with a [wiring harness](#).

General	
Weight	3.00 lb (1.36 kg)
Fitting Thread	G 1/4 BSPP
Max Pressure Tolerance @ 25°C	1kgf/cm2 (14.2psi)
Max Temperature Tolerance	60°C (140°F)
Reservoirs	
Capacity	237mL (8 fl oz)
Display Type	OLED
Pump	PMP-400 @ 12V
Temperature Sensors	10K Thermistors



NO.	DESCRIPTION				MATER'L	QUANTITY	REMARKS
					UNIT	MM	PART NO. RP-1250
					SCALE	N/S	TITLE
	DATE	BY	BY	APPRO BY	3RD ANGLE		Ass'y
05/02/2017	S.J.LEE				DWG. NO.		ITEM