

TMS-200 Software Thermal Interface Controller



[Please check the Koolance [website](#) for the most recent version of TMS software.]

The Koolance TMS-200 thermal management system provides convenient software control over features found in many Koolance systems: temperature feedback, pump speeds, and fan speeds. In addition to these basic functions, however, are a wealth of extra capabilities!

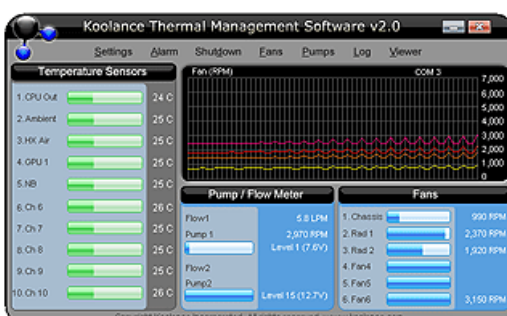
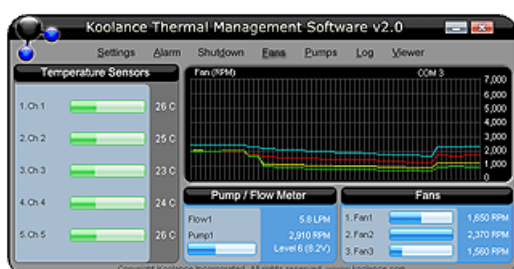
TMS-200 supports 32-bit and 64-bit versions of Microsoft Windows XP, Windows Vista, and Windows 7. Hardware is included for mounting the TMS interface card into an empty motherboard slot or 5.25" drive bay. All communication occurs via an external or internal USB port, even when installed into a motherboard slot. The TMS hardware board is powered by a direct 12V Molex power supply connection.

Have dual cooling loops? With the optional [TMS-EB200 Expansion Board](#), TMS-200 has the capability to double the

number of components it can monitor and control.

Software running with TMS-200 Main Board

Software running with TMS-200 and optional TMS-EB200 Expansion Board



(Please see the [Koolance TMS-200 Screenshots](#) page for detailed images of the software.)

*TMS-200 Main Board Features:

- Temperature monitoring of up to 5 sensors, each with individual alarm and power shutdown settings
- User-defined pump "auto" settings: set the min/max temperature values and speed for one 12V DC pump
- User-defined fan "auto" settings: set the min/max temperature values and speed for three 12V DC fans
- Coolant flow rate reporting for one Koolance flow meter
- Pump and fan RPM reporting
- Pump performance test mode
- Logging and playback of: temperatures, fan speed, pump speed, and coolant flow rate (creates raw text file)
- Option for hardware or software safety shutdown with adjustable delay period, based on any temperature
- Allows custom alarm sounds through an available sound card
- Fan/Pump connector maximum = 2A/ea. Total board limit = 6.5A.

*Optional TMS-EB200 Expansion Board Features:

- Adds 1 additional pump
- Adds 1 additional flow meter
- Adds 3 additional fans
- Adds 5 additional temperature sensors

*COMPATIBILITY NOTES: TMS can not adjust pump or fan speeds for Koolance "Exos" and "ERM" units without some customer DIY wiring extensions, and is not generally intended to be used with these external products. (Internal chassis or secondary radiator fans could be controlled instead.) Coolant flow reporting requires an optional Koolance [INS-FM16](#), [INS-FM17/N](#), or [INS-FM18](#) flow meter. Pump power adjustment requires a Koolance 12V DC pump-based system, such as: RP-1000, PC4, PC5, TNK-400, RP-980, PMP-300, PMP-400, PMP-450/S (requires [power adapter](#)), etc. Pump speed RPM reporting requires 3-wire (tach) pumps. Fan speed RPM reporting requires 3-wire (tach) fans.

Components included: TMS interface board, metal L-bracket, aluminum 5.25" drive bay tray, 5 x temperature sensors, ATX shutdown lead, external USB cable, internal USB cable, Molex power extension, 3 x 3-pin fan wire extensions, 1 x 3-pin pump wire extension.

General	
Weight	1.00 lb (0.45 kg)