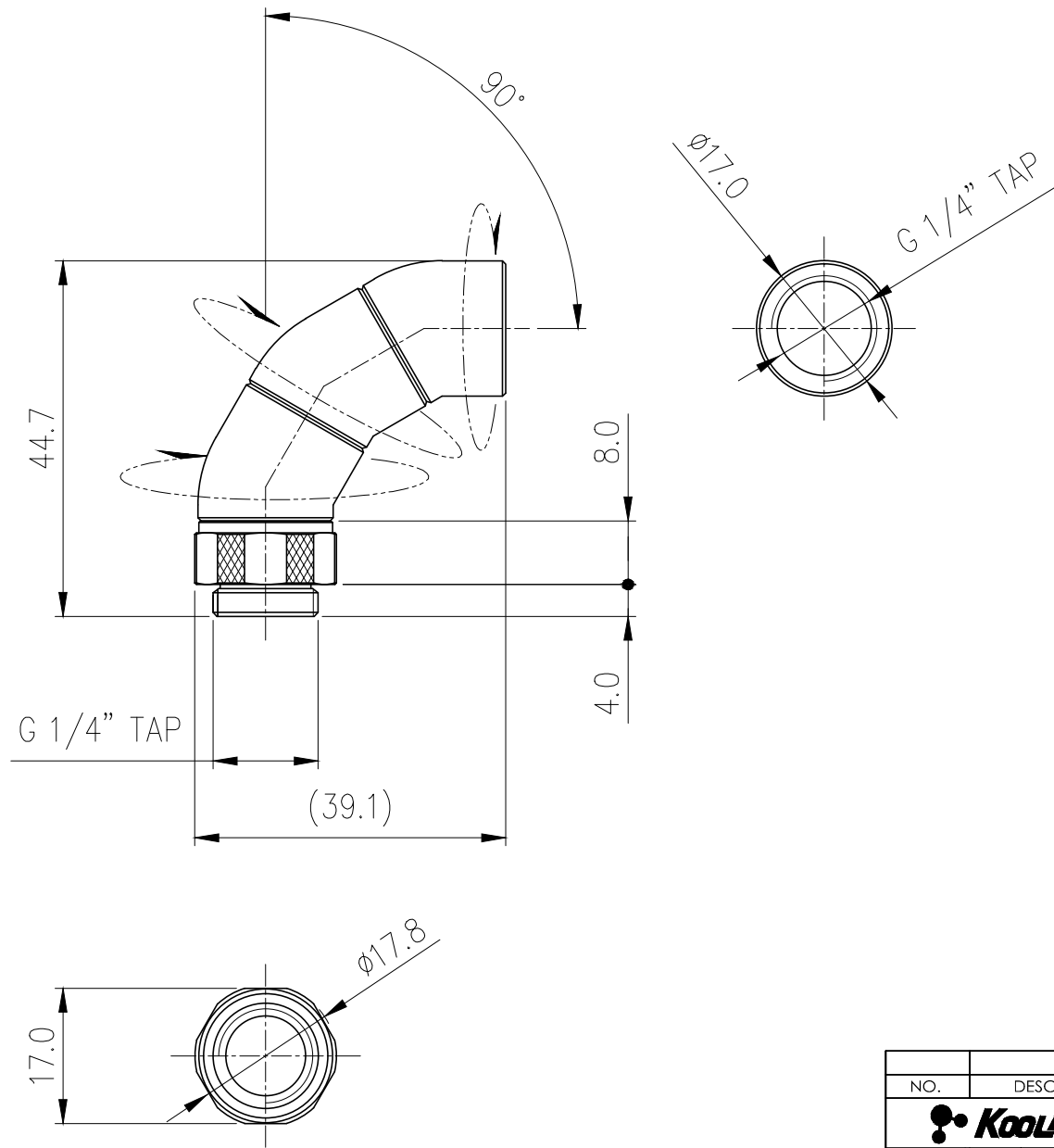




Koolance swiveling G 1/4 BSPP socket fitting. Each segment rotates for a maximum 90-degree bend.

General	
Weight	0.13 lb (0.06 kg)
Fitting Thread	G 1/4 BSPP
Max Pressure Tolerance @ 25°C	8kgf/cm2 (113.8psi)
Max Temperature Tolerance	100°C (212°F)
Wetted Materials	Brass, EPDM



NO.	DESCRIPTION	MATER'L		QUANTITY	REMARKS
		UNIT	MM		
	<b>KOOLANCE</b>	SCALE	N/S	APPAR	ADT-DXG90
DATE		BY	BY	BY	BY
04/06/2017	S.J.LEE				Ass'y
				3RD ANGLE	
				CODE NO.	DWG. NO.