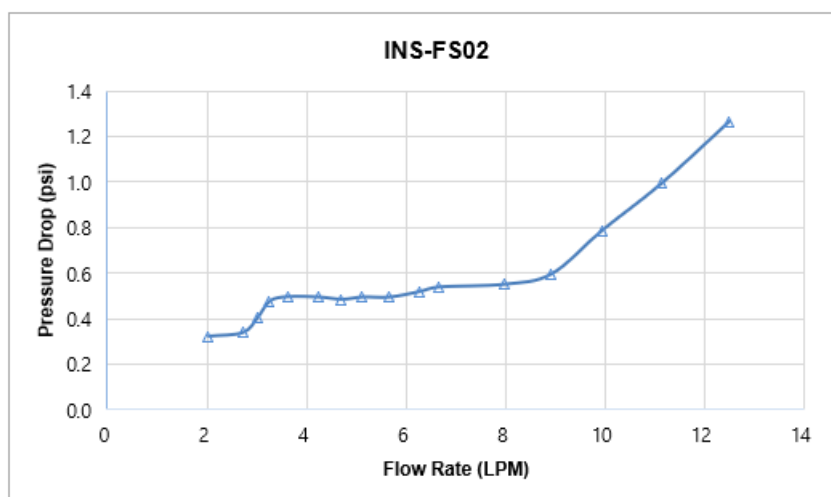


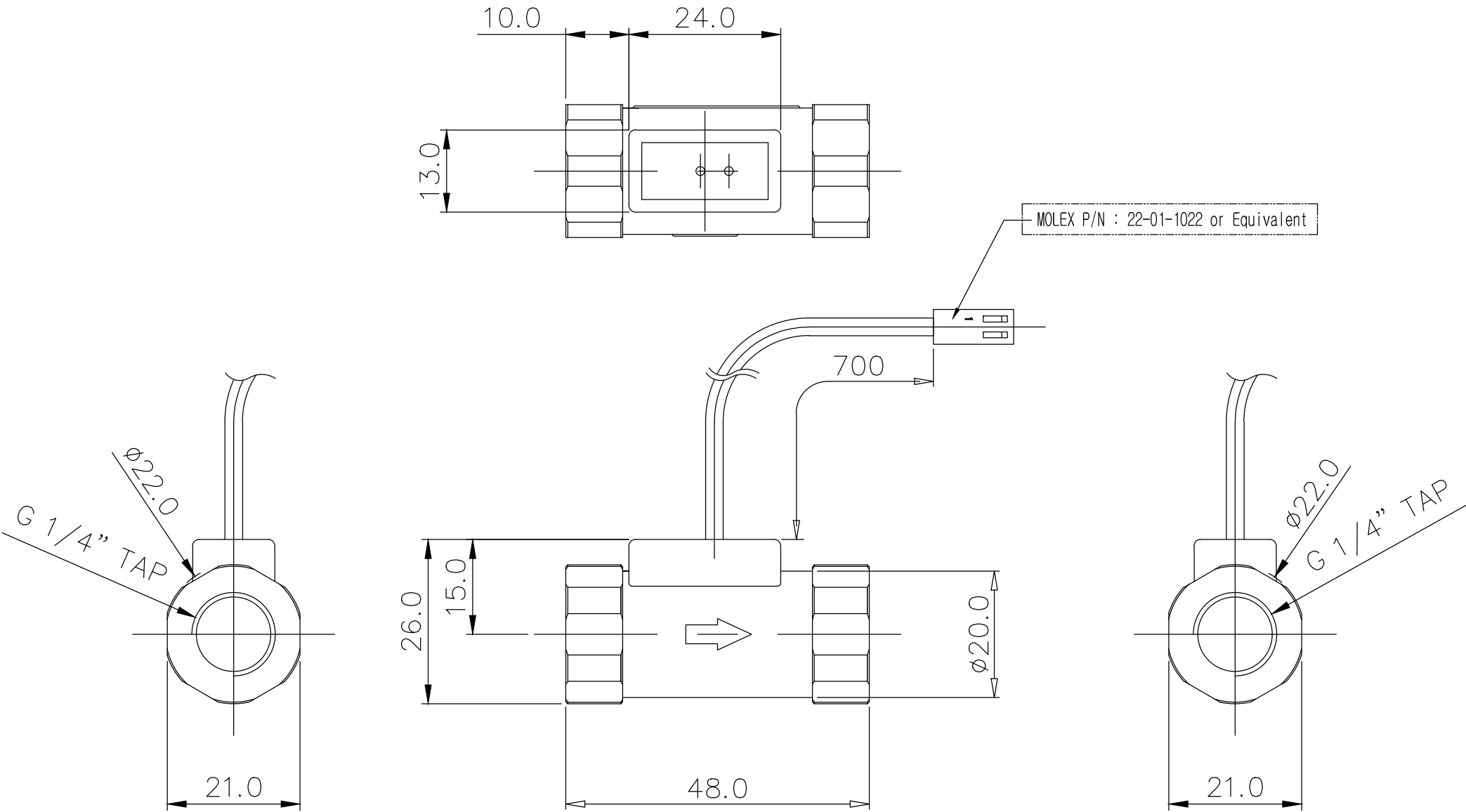
INS-FS02 Coolant Flow Switch, Stainless Steel




Koolance's inline flow switch provides a simple electronic confirmation of coolant flow. The switch will close if the flow rate stays above 2.0LPM / 0.53GPM (+/-10%), and opens when below. Fitting threads are G 1/4 BSPP, and the primary materials are stainless steel and nickel-plated brass. Wire length is about 28" (70cm). It is recommended to keep current through the flow switch at 10mA or less to prevent damage.

General	
Weight	0.18 lb (0.08 kg)
Fitting Thread	G 1/4 BSPP
Max Pressure Tolerance @ 25°C	10kgf/cm2 (142.2psi)
Max Temperature Tolerance	80°C (176°F)
Min Storage Temperature (*No Freezing)	-30°C (-22°F)
Wetted Materials	Nickel-Plated Brass, Stainless Steel, POM Acetal, Neodymium





NO.		DESCRIPTION			MATER'L		QUANTITY	REMARKS
					UNIT	MM	APPAR	INS-FS02
					SCALE	N/S	TITLE	
		BY	BY	BY	APPRO	BY	3RD ANGLE	
DATE							CODE NO.	
09/17/2020		YS.Shin					DWG. NO.	