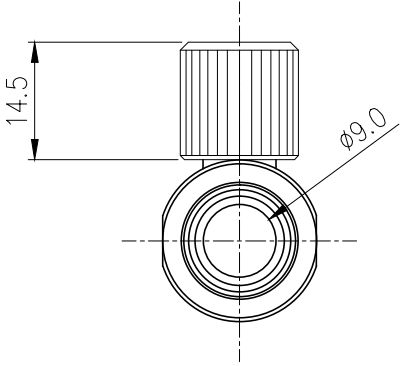
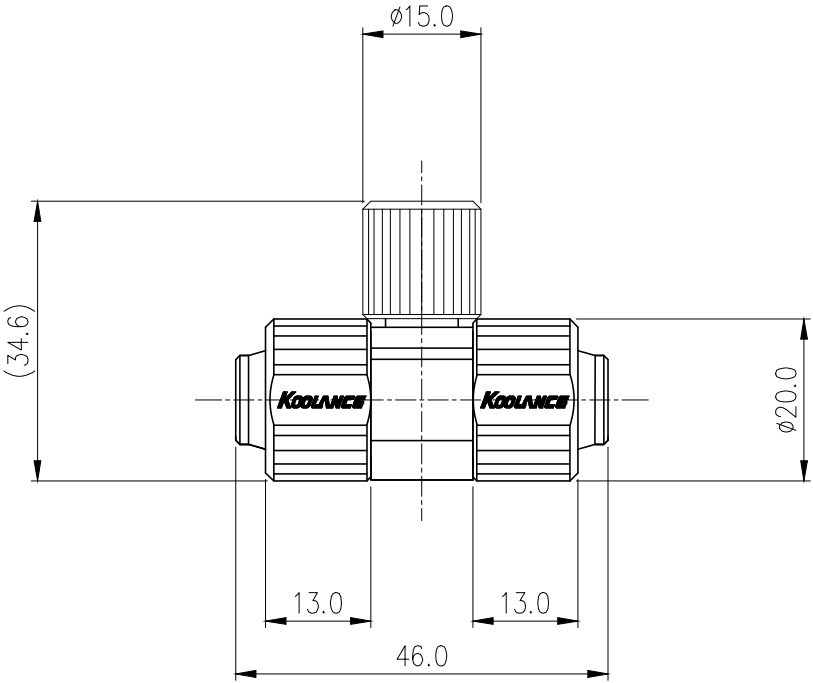





Inline drain valve to expedite coolant evacuation without turning your unit upside-down. Nickel-plated brass.

To use, simply install the valve on a 10mm (3/8in), 13mm (1/2in) OD line near the bottom of your setup. When you need to empty the system, place a 1-Liter container below the valve and unscrew it. Next, open the top Koolance reservoir refill plug on your cooling system.

General	
Weight	0.19 lb (0.09 kg)
Max Pressure Tolerance @ 25° C	15kgf/cm2 (213.4psi)
Max Temperature Tolerance	120° C (248° F)
Wetted Materials	Nickel-Plated Brass, EPDM



△					
REV	DATE	CONTENTS	REVD BY	CHKD BY	APPD BY
REVISION					

NO.		DESCRIPTION				MATER'L		QUANTITY	REMARKS	
						UNIT	MM	ITEM VLV-10TSPL		
						SCALE	N/S	TITLE		
DATE		BY	BY	BY	APPRO BY	Ass'y				
						3RD ANGLE				
		S.J.LEE				CODE NO.		DWG. NO.		PAGE