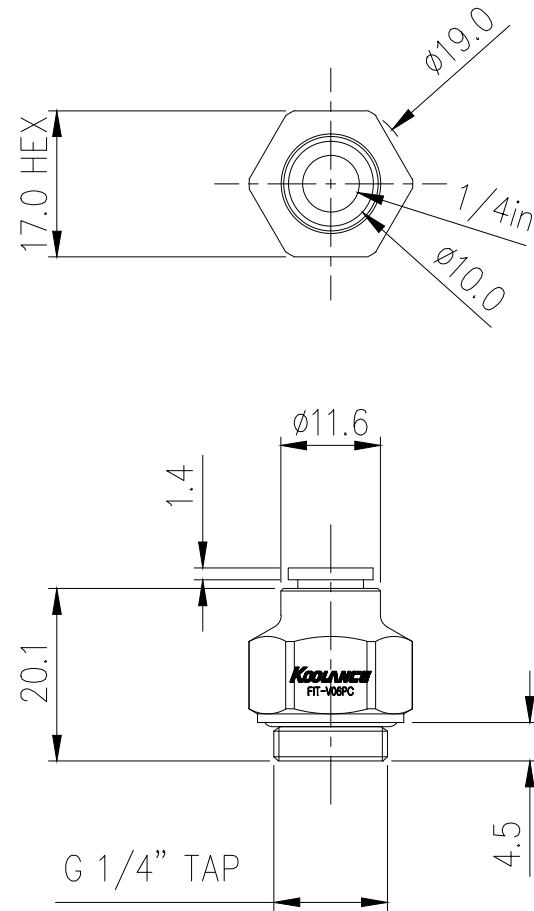



Push-to-Connect Fitting for 1/4in (6.35mm) OD,
G 1/4 BSPP



Koolance push-to-connect tube fitting for 1/4in (6.35mm) OD dense plastic tubing, G 1/4 BSPP thread. (Not for use with softer plastic materials, such as Koolance's PVC or PU tubing.) A toothed collet and dual o-rings secure tubing when inserted. To release tubing for removal, depress the outer ring.

General	
Weight	0.06 lb (0.03 kg)
Fitting Thread	G 1/4 BSPP
Max Pressure Tolerance @ 25 °C	8kgf/cm2 (113.8psi)
Max Temperature Tolerance	80 °C (176 °F)
Min Storage Temperature (*No Freezing)	-30°C (-22°F)
Wetted Materials	Brass, Nickel Plating, EPDM



NO.		DESCRIPTION			MATER'L		QUANTITY		REMARKS	
					UNIT	MM	APPAR FIT-V06PC			
					SCALE	N/S	TITLE Ass'y			
DATE		BY	BY	BY	APPRO	BY				
AUG.03.2022		S.J.LEE					CODE NO.		DWG. NO.	