



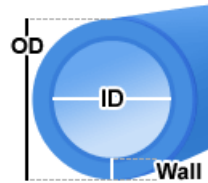
Single hose barb fitting for 3/8in (10mm) ID tubing. 3/8 NPT (tapered) thread. Hose clamp for 1/2in (13mm) OD included.

Intended Tubing Size

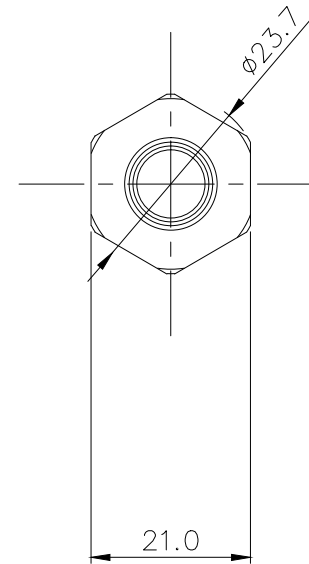
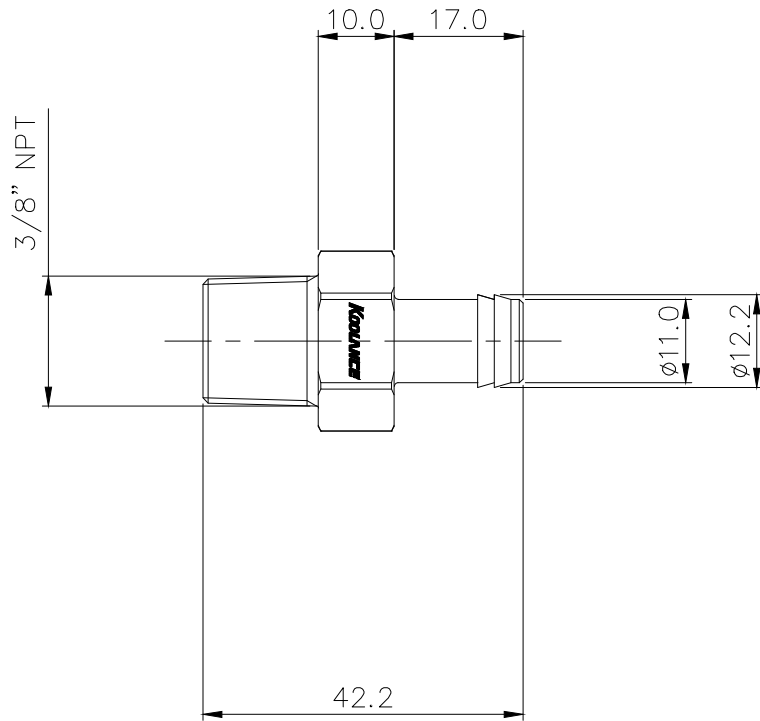
ID: 10mm (3/8")

OD: 13mm (1/2")

Wall: 1.5mm (1/16")



General	
Weight	0.14 lb (0.06 kg)
Materials	Brass, Nickel Plating, EPDM
Max Pressure @ 25 °C	15kgf/cm ² (213.4psi)
Max Temperature	120 °C (248 °F)



NO.	DESCRIPTION	MATER'L		QUANTITY	REMARKS
	Koolance	UNIT	MM	ITEM	FIT-V10N38
		SCALE	N/S	TITLE	
DATE	BY	BY	BY	APPRO	BY
	S.J.LEE			3RD ANGLE	
		CODE NO.		DWG. NO.	PAGE

Ass'y