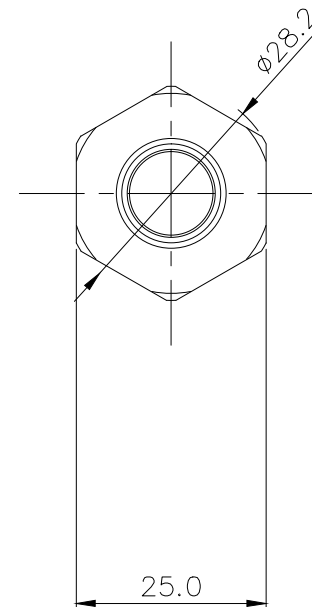
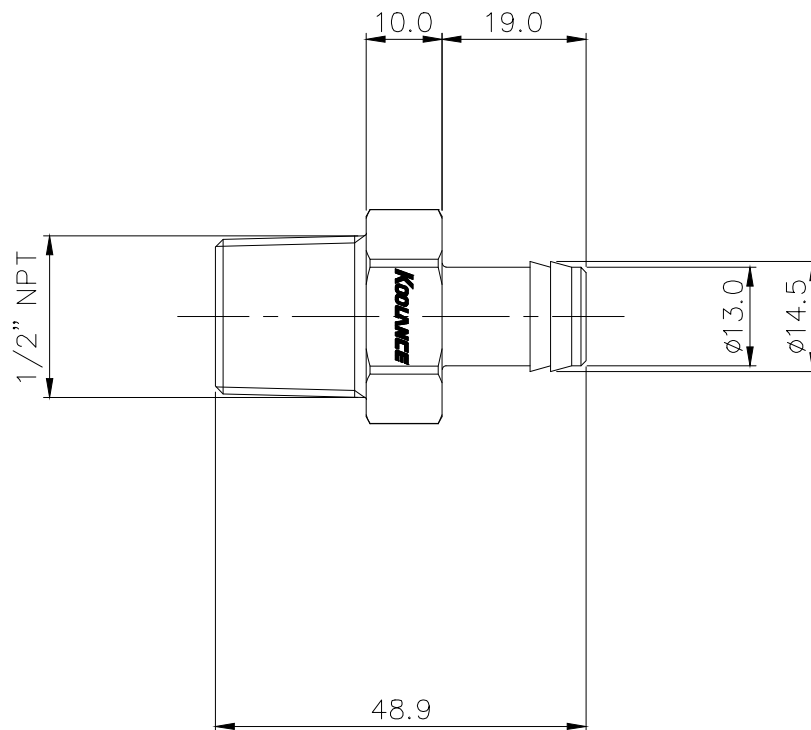





Single hose barb fitting for 1/2in (13mm) ID tubing. 1/2 NPT (tapered) thread. Hose clamp for 5/8in (16mm) OD included.

General	
Weight	0.19 lb (0.09 kg)
Max Pressure Tolerance @ 25° C	15kgf/cm2 (213.4psi)
Max Temperature Tolerance	120° C (248° F)
Wetted Materials	Brass, Nickel Plating, EPDM



NO.		DESCRIPTION				MATER'L		QUANTITY		REMARKS	
 KOOLANCE®						UNIT	MM	ITEM	FIT-V13N12		
						SCALE	N/S	TITLE	Ass'y		
DATE		BY	BY	BY	APPRO BY	3RD ANGLE					
		S.J.LEE				CODE NO.		DWG. NO.		PAGE	