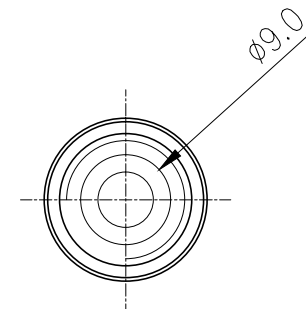
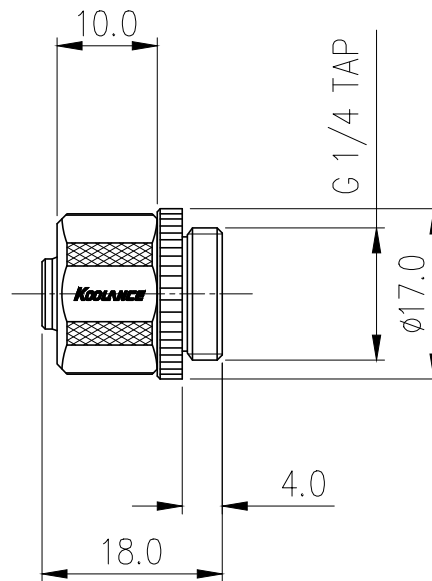
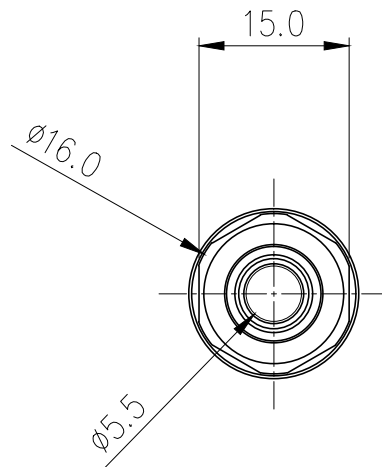


Compression Fitting for 06mm x 10mm (1/4in x 3/8in), G 1/4 BSPP



Single fitting for 1/4in (6mm) ID, 3/8in (10mm) OD tubing. G 1/4 BSPP (parallel) thread.

General	
Weight	0.04 lb (0.02 kg)
Materials	Brass, Nickel Plating, EPDM
Max Pressure Tolerance @ 25° C	15kgf/cm2 (213.4psi)
Max Temp. Operating Tolerance	120° C (248° F)



REV	DATE	CONTENTS	REVD BY	CHKD BY	APPD BY
REVISION					

NO.	DESCRIPTION			MATER'L		QUANTITY	REMARKS
KODANCE <small>INC.</small>			UNIT	MM	APPAR FIT-V06X10(-BK)		
			SCALE	N/S			
DATE	BY	BY	BY	APPRD BY	Ass'y		
05.01.2014	S.J.LEE						
REF. NO.					DWG. NO.		