



www.koolance.com

Specifications Sheet

Generated: 2024-04-13

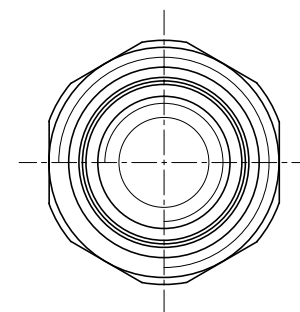
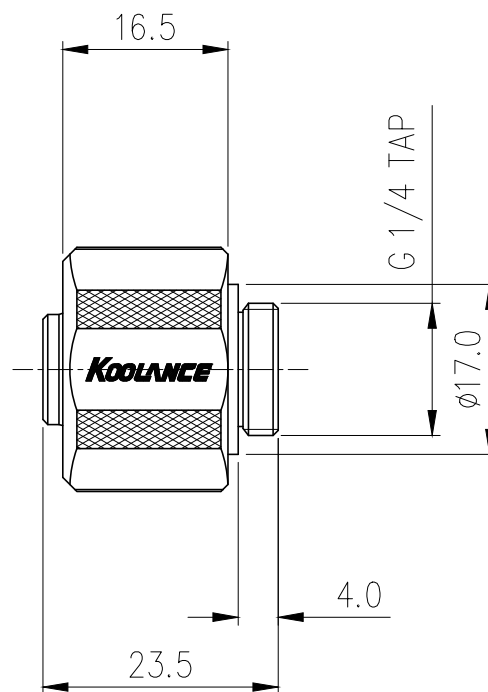
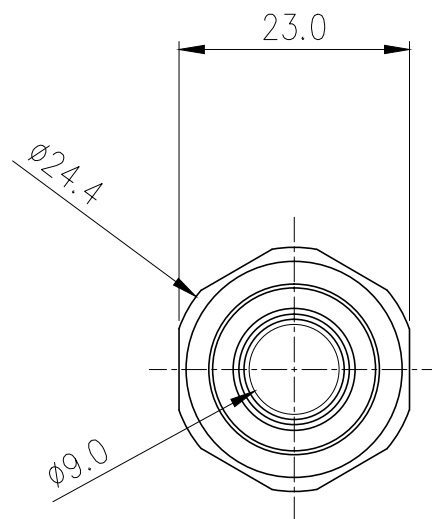
P/N: FIT-V10X16-BK

Compression Fitting for 10mm x 16mm (3/8in x 5/8in) \*Black\*, G 1/4 BSPP



Single fitting for 3/8in (10mm) ID, 5/8in (16mm) OD tubing. G 1/4 BSPP (parallel) thread fitting.

General	
Weight	0.09 lb (0.04 kg)
Max Pressure Tolerance @ 25° C	15kgf/cm2 (213.4psi)
Max Temperature Tolerance	120° C (248° F)
Wetted Materials	Brass, EPDM



△					
△					
REV	DATE	CONTENTS	REVD BY	CHKD BY	APPD BY
REVISION					

NO.		DESCRIPTION			MATER'L		QUANTITY		REMARKS	
<b>KOOLANCE</b>					UNIT	MM	APPAR FIT-V10X16(-BK)			
					SCALE	N/S	TITLE			
DATE		BY	BY	BY	APPRO BY	3RD ANGLE		Ass'y		
05.01.2014		S.J.LEE				REF. NO.		DWG. NO.		