



www.koolance.com

Specifications Sheet

Generated: 2024-04-12

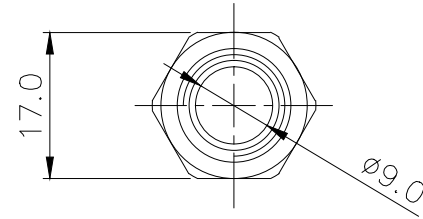
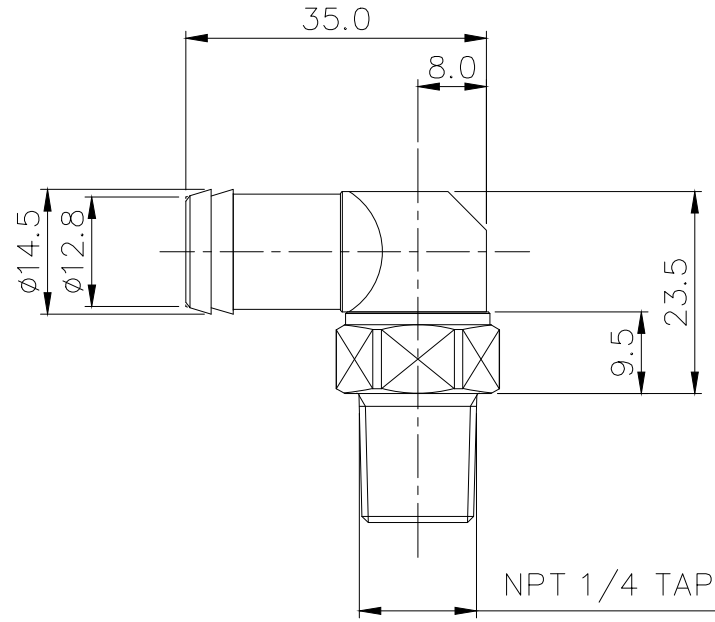
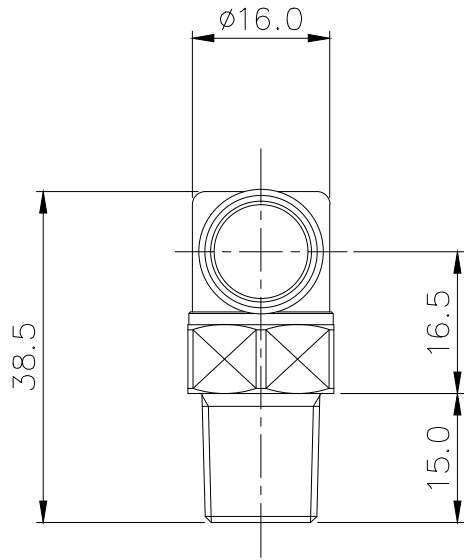
P/N: FIT-L13N14


Rotary Elbow Barb Fitting for 13mm (1/2in) ID,
1/4 NPT



Single rotational angled fitting for 1/2in (13mm) ID tubing. 1/4 NPT (tapered) thread. Tube clamp for 5/8in (16mm) OD included.

General	
Weight	0.13 lb (0.06 kg)
Max Pressure Tolerance @ 25° C	8kgf/cm2 (113.8psi)
Max Temperature Tolerance	100° C (212° F)
Wetted Materials	Brass, Nickel Plating, EPDM



NO.		DESCRIPTION			MATER'L		QUANTITY	REMARKS
					UNIT	MM	APPAR FIT—L13N14	
					SCALE	N/S	TITLE	
DATE		BY	BY	BY	APPRO BY	Ass'y		
JUN.02.2021		S.J.LEE			CODE NO.		DWG. NO.	