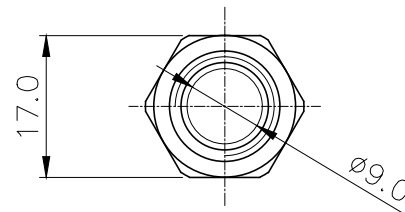
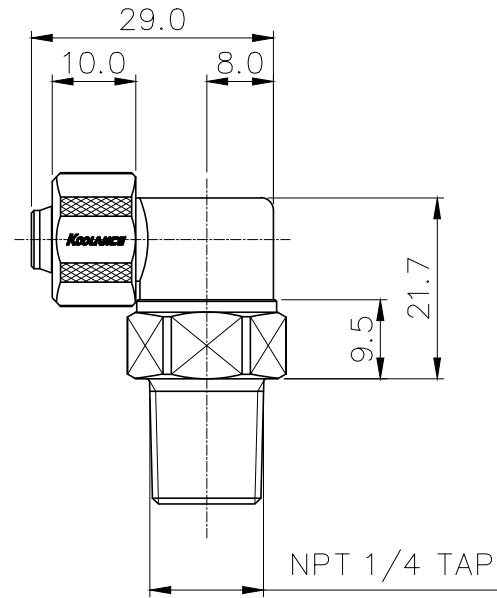
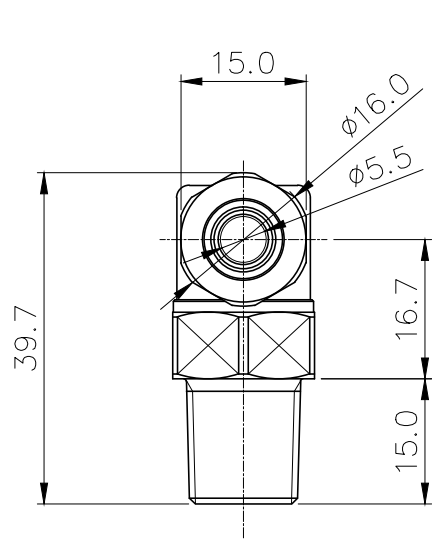


**Rotary Elbow Compression Fitting for 06mm x
10mm (1/4in x 3/8in), 1/4 NPT**



Single rotational angled fitting for 1/4in (6mm) ID, 3/8in (10mm) OD tubing. 1/4 NPT (tapered) thread.

General	
Weight	0.09 lb (0.04 kg)
Materials	Brass, Nickel Plating, EPDM
Max Pressure Tolerance @ 25° C	8kgf/cm2 (113.8psi)
Max Temp. Operating Tolerance	100° C (212° F)



REV	DATE	CONTENTS	REVD BY	CHKD BY	APPD BY
REVISION					

NO.	DESCRIPTION			MATER'L	QUANTITY	REMARKS
KOOLANCE INC.				UNIT	MM	APPAR FIT-L06X10N14
				SCALE	N/S	TITLE
				Ass'y		
DATE	BY	BY	BY	APPRD BY	3RD ANGLE	
				REF. NO.	DWG. NO.	