

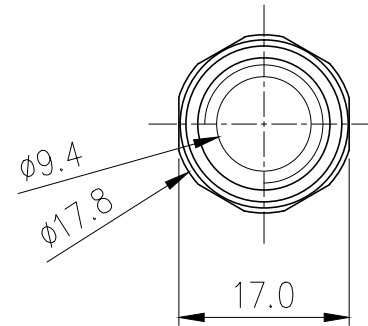
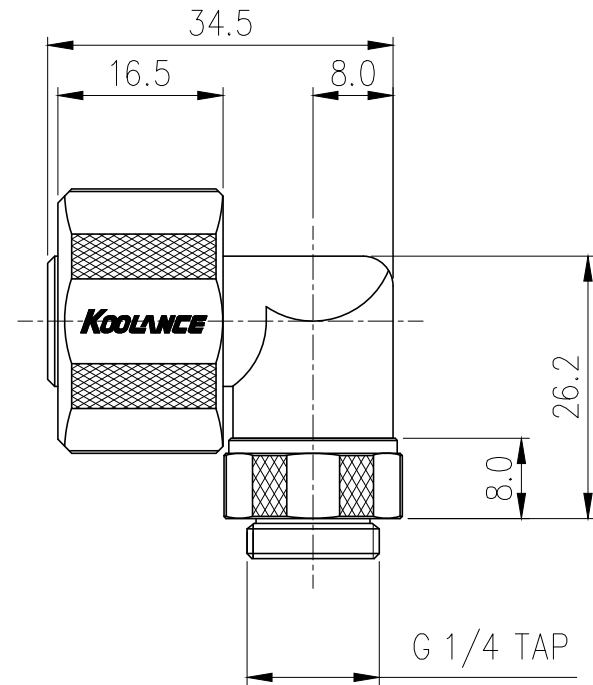
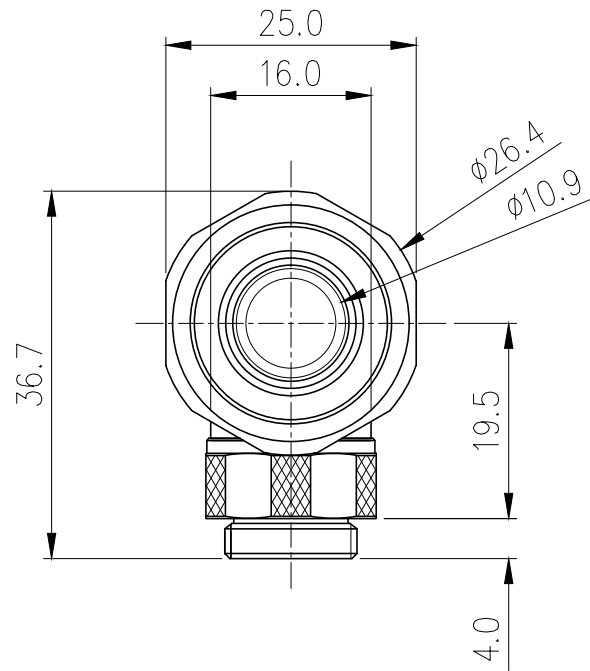
P/N: FIT-L13X19-R

**Rotary Elbow Compression Fitting for 13mm x
19mm (1/2in x 3/4in), G 1/4 BSPP (Refurb)**



Single rotational angled fitting for 1/2in (13mm) ID, 3/4in (19mm) OD tubing. G 1/4 BSPP (parallel) thread.

General	
Weight	0.16 lb (0.07 kg)



△					
△					
REV	DATE	CONTENTS	REVD BY	CHKD BY	APPD BY
REVISION					

NO.		DESCRIPTION			MATER'L		QUANTITY		REMARKS		
KOOLANCE					UNIT	MM	APPAR FIT-L13X19(-BK)				
					SCALE	N/S	TITLE				
DATE		BY	BY	BY	APPRO	BY	Ass'y				
04.30.2014		S.J.LEE					REF. NO.		DWG. NO.		

Ass'y