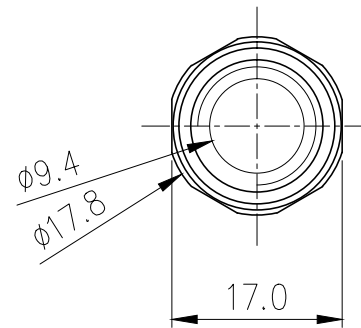
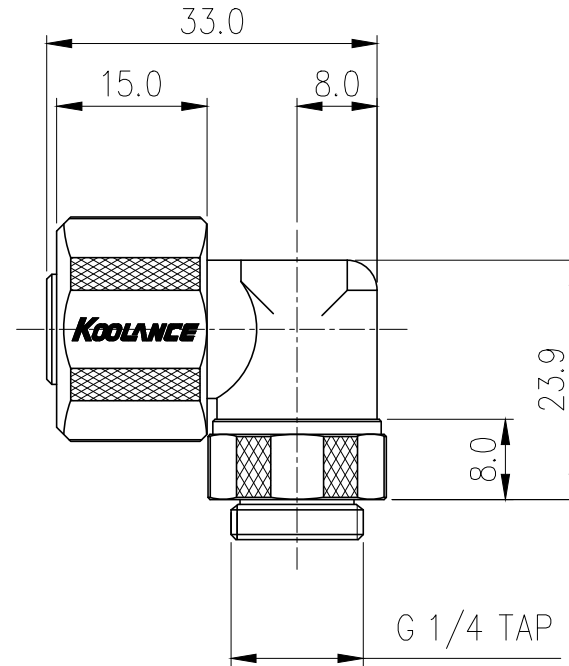
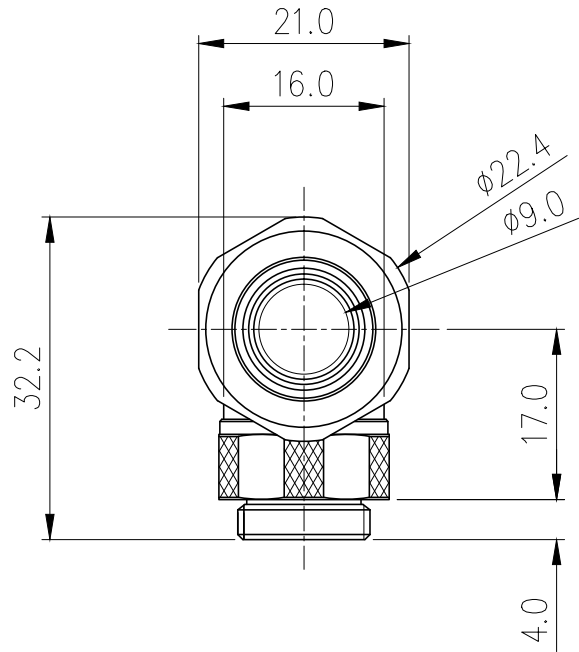


**Rotary Elbow Compression Fitting for 10mm x  
13mm (3/8in x 1/2in) \*Black\*, G 1/4 BSPP**



Single rotational angled fitting for 3/8in (10mm) ID, 1/2in (13mm) OD tubing. G 1/4 BSPP (parallel) thread.

General	
Weight	0.11 lb (0.05 kg)
Max Pressure Tolerance @ 25°C	8kgf/cm2 (113.8psi)
Max Temperature Tolerance	100°C (212°F)
Wetted Materials	Brass, EPDM



REV	DATE	CONTENTS	REVD BY	CHKD BY	APPD BY
REVISION					

NO.	DESCRIPTION			MATER'L		QUANTITY	REMARKS
<b>Koolance Inc.</b>			UNIT	MM	APPAR FIT-L10X13(-BK)		
DATE	BY	BY	BY	APPRD BY	SCALE	N/S	TITLE
04.30.2014	S.J.LEE				3RD ANGLE		Ass'y
REF. NO.						DWG. NO.	