



www.koolance.com

Specifications Sheet

Generated: 2024-04-25

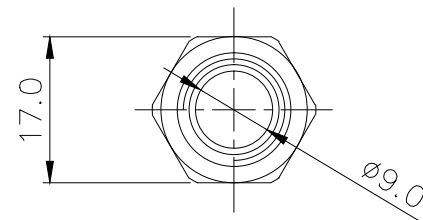
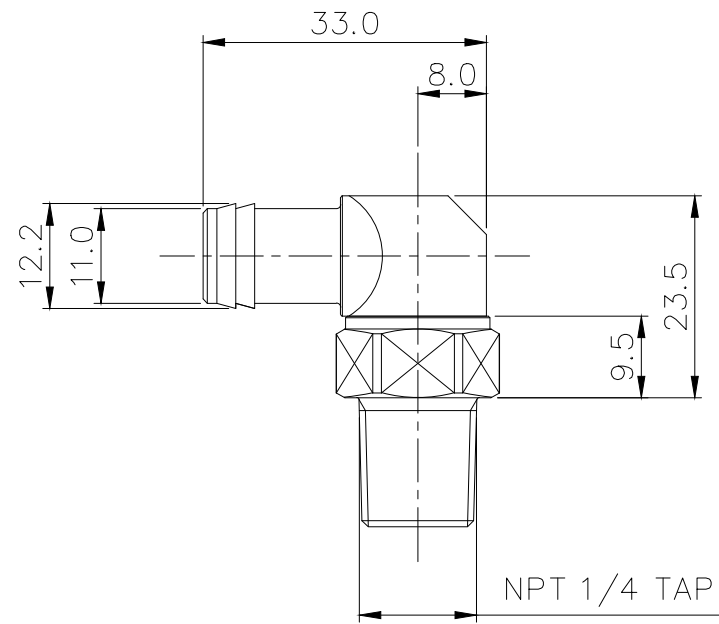
P/N: FIT-L10N14


Rotary Elbow Barb Fitting for 10mm (3/8in) ID,
1/4 NPT



Single rotational angled fitting for 3/8in (10mm) ID tubing. 1/4 NPT (tapered) thread. Tube clamp for 1/2in (13mm) OD included.

General	
Weight	0.12 lb (0.05 kg)
Max Pressure Tolerance @ 25° C	8kgf/cm2 (113.8psi)
Max Temperature Tolerance	100° C (212° F)
Wetted Materials	Brass, Nickel Plating, EPDM



NO.		DESCRIPTION			MATER'L		QUANTITY	REMARKS
 KOOLANCE®					UNIT	MM	APPAR	FIT-L10N14
					SCALE	N/S	TITLE Ass'y	
DATE	BY	BY	BY	APPRO BY	3RD ANGLE			
JUN.02.2021	S.J.LEE				CODE NO.	DWG. NO.		