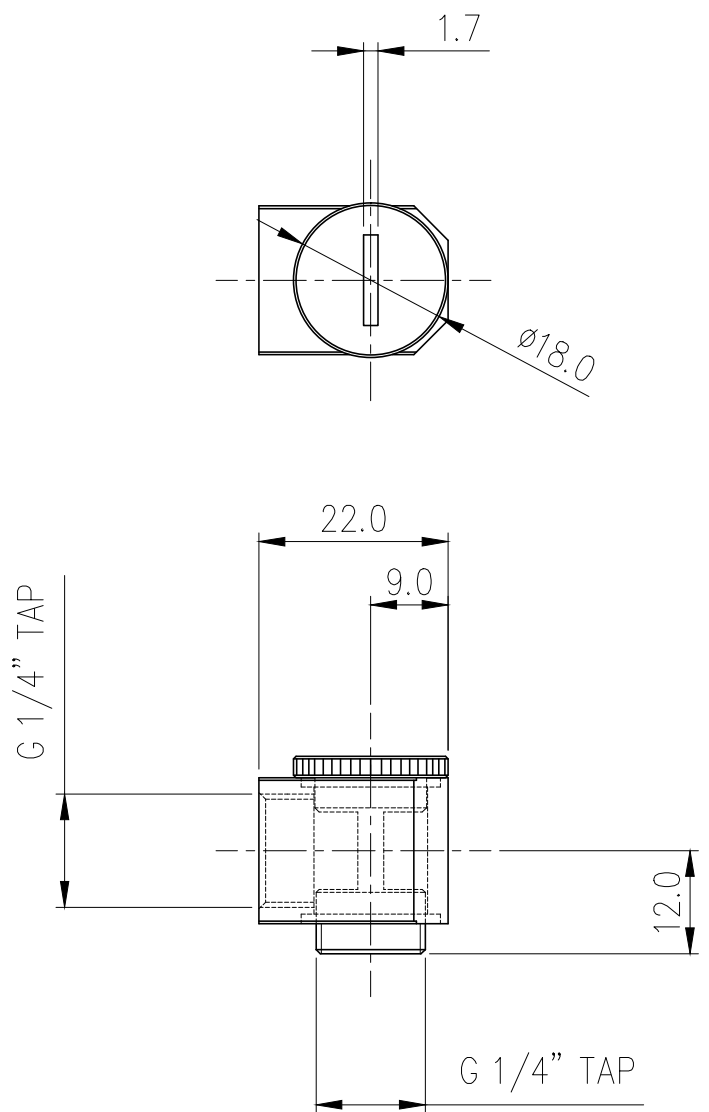
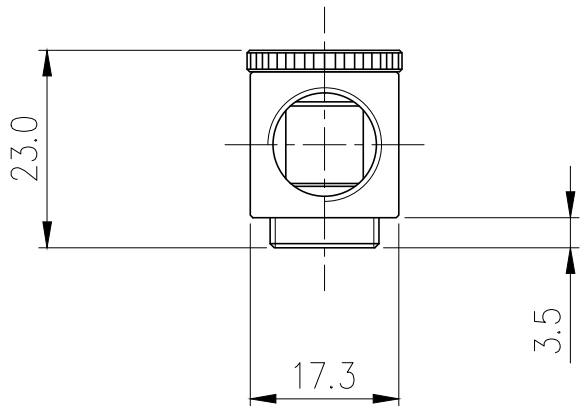



**Fitting Single, Adjustable Elbow (Low Profile),
G 1/4 BSPP**

NZL-LXG2 is a special lower-profile fitting than [NZL-LXG1](#) at only 2cm (0.79") high.

Create a 90 degree elbow bend using any Koolance G 1/4 BSPP (parallel) thread fitting. This fitting's angle can be adjusted before tightening down the slot-headed piece. For a basic elbow fitting, the [Koolance Coupling Adapter](#) could also be used. Or for maximum adjustment, consider placing two elbow fittings together. Tube fitting not included.

General	
Weight	0.09 lb (0.04 kg)
Fitting Thread	G 1/4 BSPP
Max Pressure Tolerance @ 25° C	8kgf/cm2 (113.8psi)
Max Temperature Tolerance	100° C (212° F)
Wetted Materials	Brass, Nickel Plating, EPDM



NO.	DESCRIPTION				MATER'L		QUANTITY	REMARKS
					UNIT	MM	APPAR	NZL-LXG2(-BK)
				APPRO	SCALE	N/S	TITLE Ass'y	
DATE	BY	BY	BY	BY	3RD ANGLE			
04/25/2017	S.J.LEE				CODE NO.		DWG. NO.	