

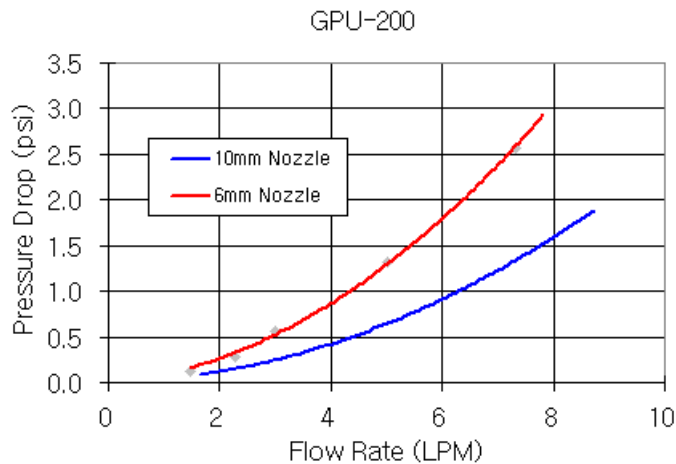
GPU-200 Cold Plate, 45mm x 45mm (1.8in x 1.8in)

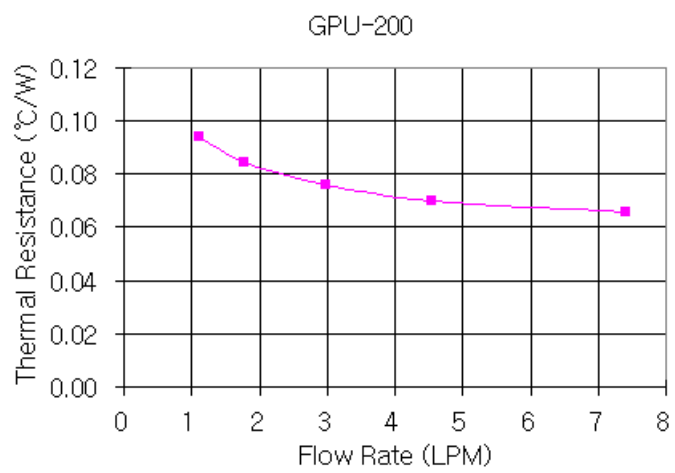


The GPU-200 is a general-purpose block with a square peg array internal structure. The cooling area footprint is 45mm x 45mm (1.8in x 1.8in). Materials include a copper cold plate, brass top, anti-corrosive nickel plating, and EPDM o-ring. G 1/4 BSPP (parallel) thread.

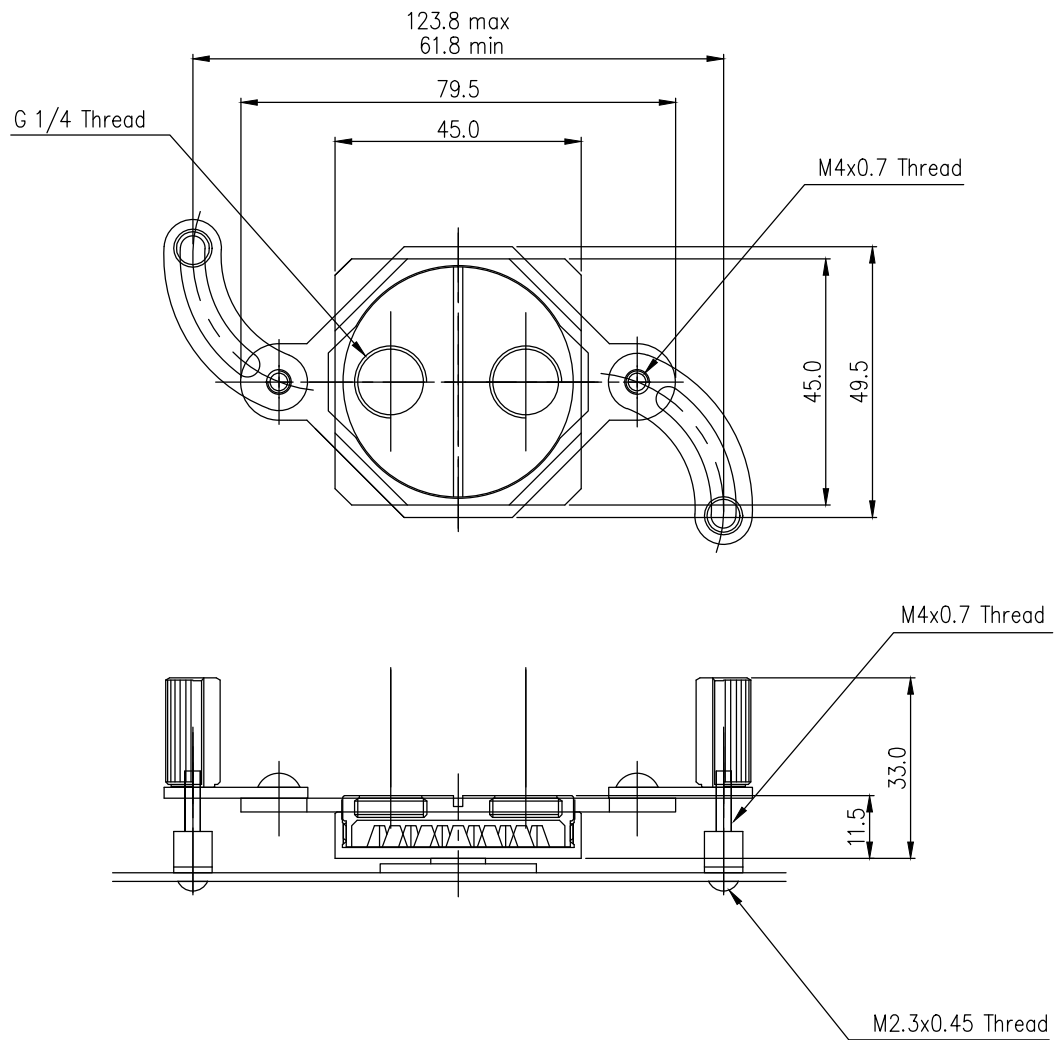
The included bracket adjusts for diagonal mounting hole distances from approximately 65mm to 124mm (2.56in to 4.9in).

Cold Plates	
Flow Resistance @ 5LPM (10-13mm ID)	0.049kgf/cm2 (0.7psi)
Thermal Resistance @ 5LPM (Approx.)	0.07° C/W
General	
Weight	0.50 lb (0.23 kg)
Fitting Thread	G 1/4 BSPP
Max Pressure Tolerance @ 25° C	10kgf/cm2 (142.2psi)
Max Temperature Tolerance	100° C (212° F)
Wetted Materials	Nickel-Plated Copper, Nickel-Plated Brass, EPDM

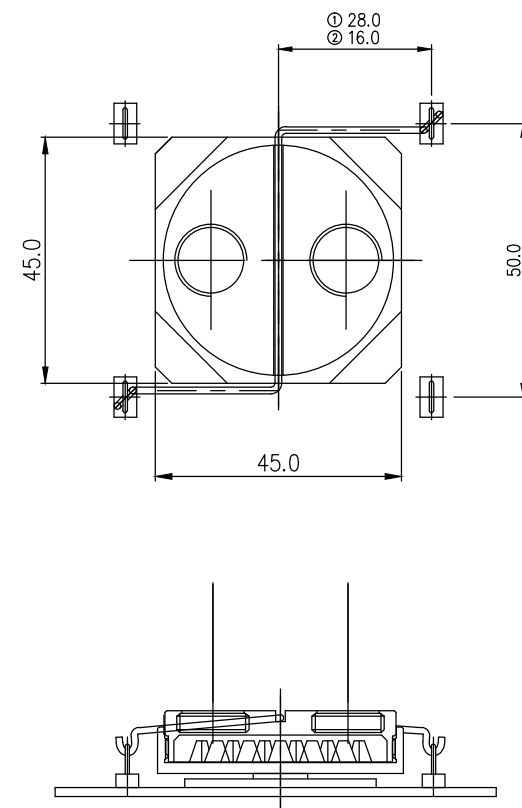




Screw Type



Pin Type



REV	DATE	CONTENTS	REVD BY	CHKD BY	APPD BY
△					
△					
REVISION					

NO.		DISCRIPTION			MATER'L		QUANTITY	REMARKS	
<i>Koolance</i> <small>INC.</small>					UNIT	MM.INCH	APPAR	GPU-200	
				APPRO	SCALE	1:1	TITLE		
DATE	BY	BY	BY	BY	3RD ANGLE		Mechanical Dimension		
	AK. SONG				REF. NO.		DWG. NO.		