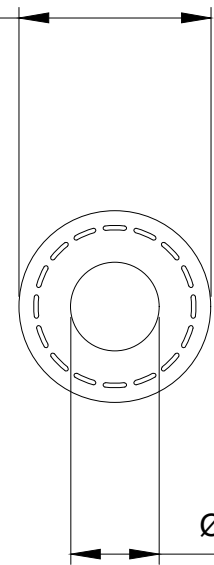




Koolance black EPDM thread-reinforced hose with 6mm (1/4in) internal diameter, 13mm (1/2in) external diameter. Length 10m / 32.8ft. Bend radius is approximately 30mm (1.18in).

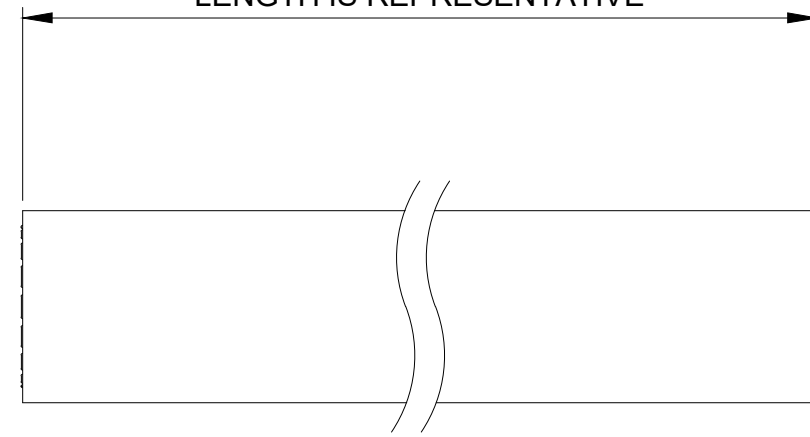
General	
Weight	2.80 lb (1.27 kg)
Max Pressure Tolerance @ 25 °C	7.1kgf/cm <sup>2</sup> (101.5psi)
Max Temperature Tolerance	120 °C (248 °F)
Hardness (Shore)	70A

Ø 1/2 in (12.7mm)



Ø 1/4 in (6.4mm)

LENGTH IS REPRESENTATIVE



### EPDM thread-reinforced

NO.	DESCRIPTION				MATER'L		QUANTITY	REMARKS
					UNIT	inch	APPAR	
						SCALE	N/S	TITLE
DATE	BY	BY	BY	APPRD BY		3RD ANGLE		HOS-06X13EP-XX
2026.05.11	SK.An					CODE NO.		DWG. NO.