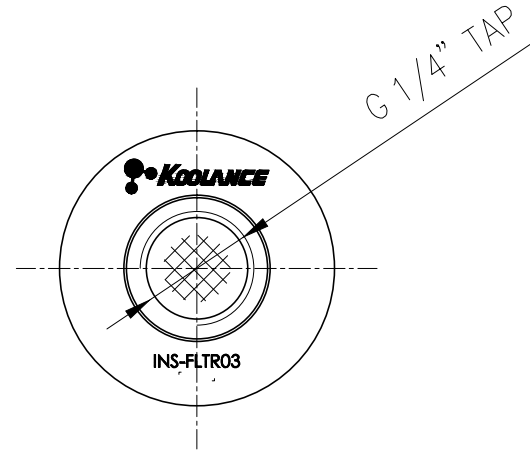
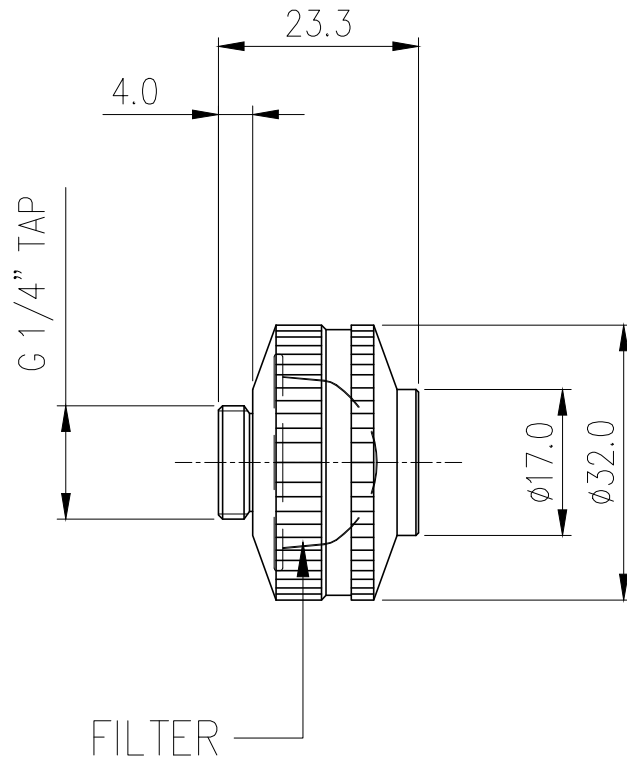




All metal inline coolant filter for keeping accidental debris from damaging the pump or clogging other components. It includes two reusable stainless steel filters with hole sizes of 0.42mm/sq and 0.27mm/sq.

G 1/4 BSPP sockets are provided on both sides, with one male and one female for easy installation into the inlet of a water block, pump, or heat exchanger. Nickel-plated brass and stainless steel mesh filters. The filter body can be unscrewed for cleaning or replacement.

General	
Weight	0.16 lb (0.07 kg)
Fitting Thread	G 1/4 BSPP
Materials	Nickel-Plated Brass, Stainless Steel, EPDM
Max Pressure @ 25° C	5kgf/cm2 (71.1psi)
Max Temperature	70° C (158° F)



NO.	DESCRIPTION	MATER'L		QUANTITY	REMARKS
	KOOLANCE	UNIT	MM	APPAR	INS-FLTR03
		SCALE	N/S	TITLE	
DATE	BY	BY	APPRO BY	3RD ANGLE	
04/11/2017	S.J.LEE			CODE NO.	DWG. NO.

Ass'y