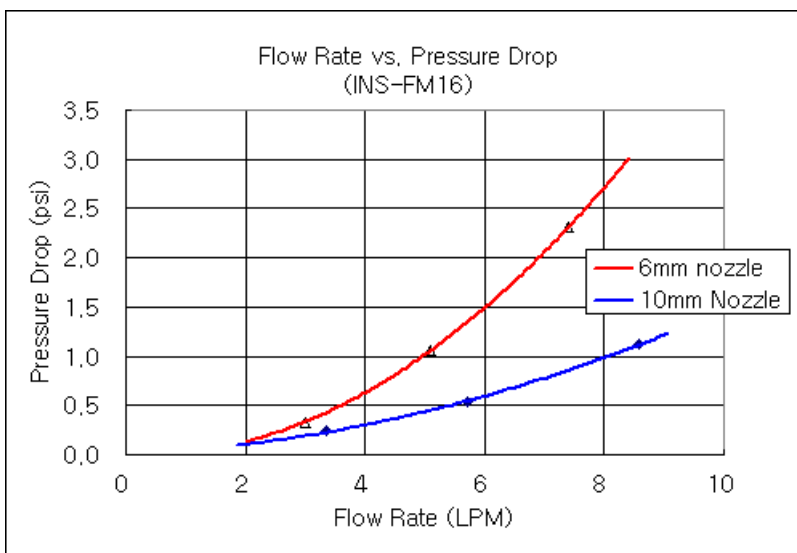


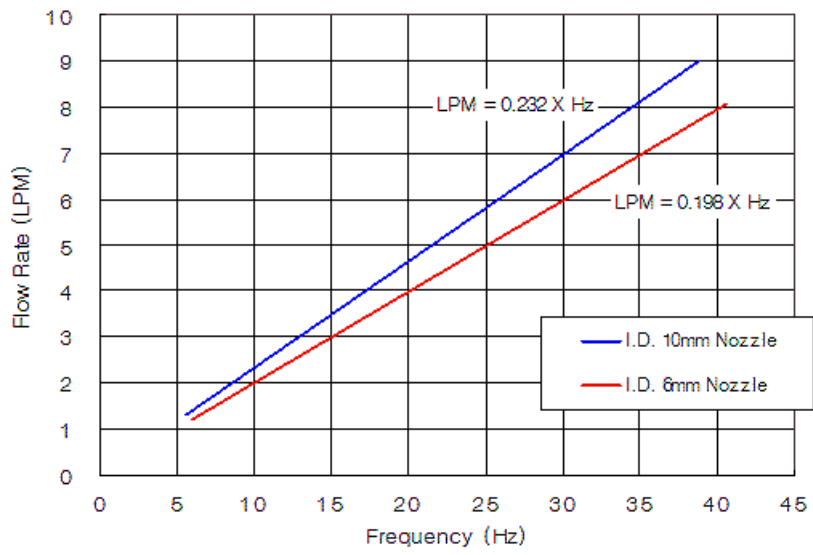


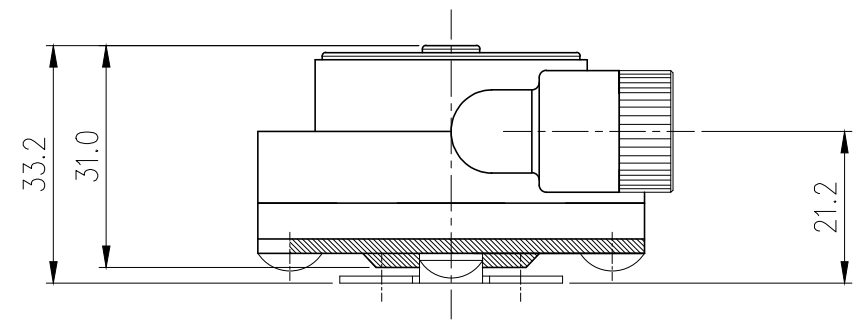
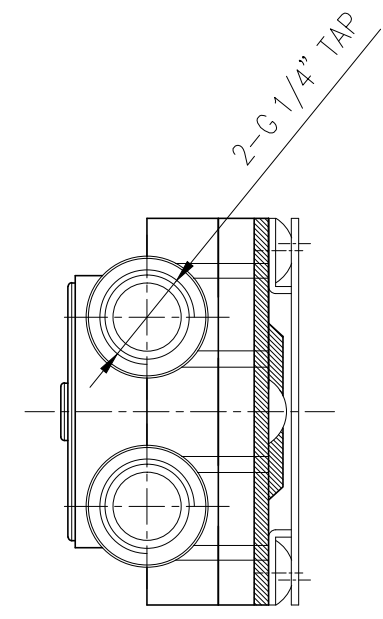
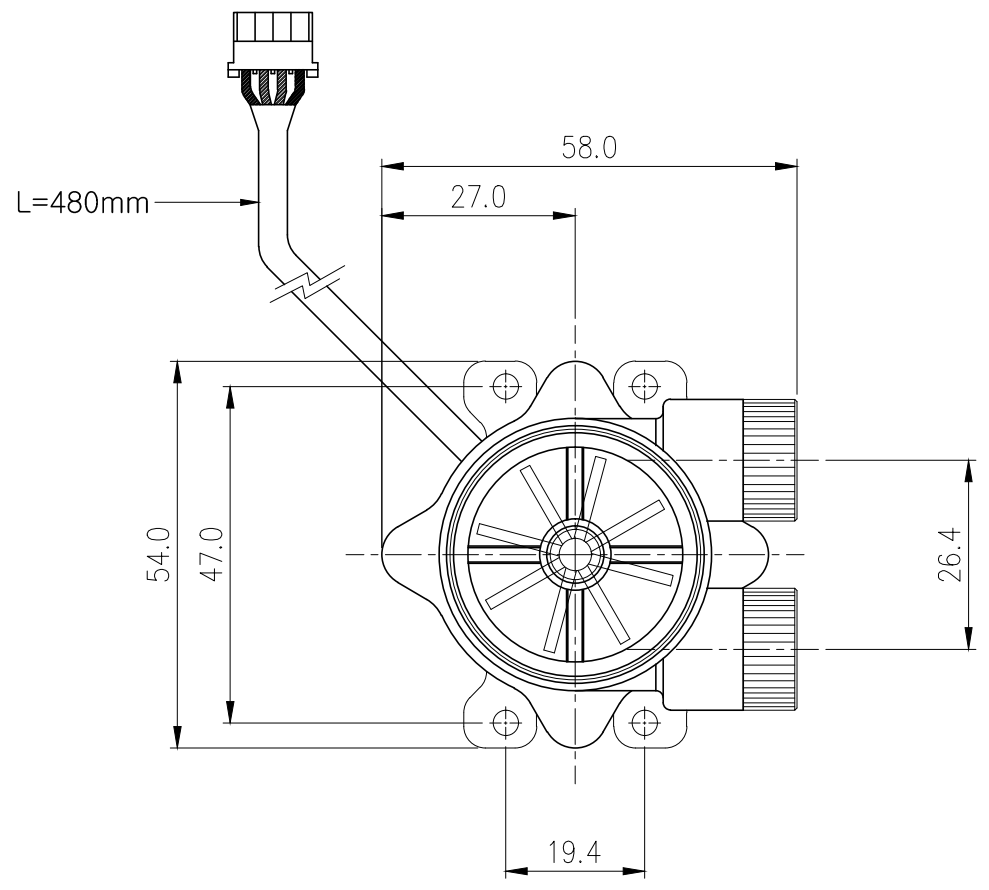
Koolance's inline flow meters provide electronic indication of real-time coolant flow rate. Internal LEDs can be illuminated with optional components described below. G 1/4 BSPP fitting threads, and primary materials are nickel-plated brass and acrylic. Approximate read range is 0.5-15 LPM (7.8-238 GPH). Wire length is approximately 19" (48cm).

Koolance [DCB-FM01](#) or [CTR-KSM100](#) can be used to display the flow rate, if not connected to a compatible Koolance cooling system.

Flow Meters	
Accuracy (Approx.)	+/-5%
Flow Rate Range	0.5-15 LPM (7.8-238 GPH)
General	
Weight	0.23 lb (0.10 kg)
Fitting Thread	G 1/4 BSPP
Materials	Nickel-Plated Brass, Brass, PMMA Acrylic, Stainless Steel, POM Acetal, Plastic, SmCo5
Max Pressure @ 25° C	2kgf/cm2 (28.5 psi)
Max Temperature	70° C (158° F)
Min Temperature	0° C (32° F)







NO.	DESCRIPTION	MATER'L		QUANTITY	REMARKS
	KOOLANCE	UNIT	MM	PART NO.	INS-FM16
		SCALE	N/S	TITLE	Ass'y
DATE	BY	BY	APPRO BY	3RD ANGLE	
05/15/2017	S.J.LEE			DWG. NO.	ITEM