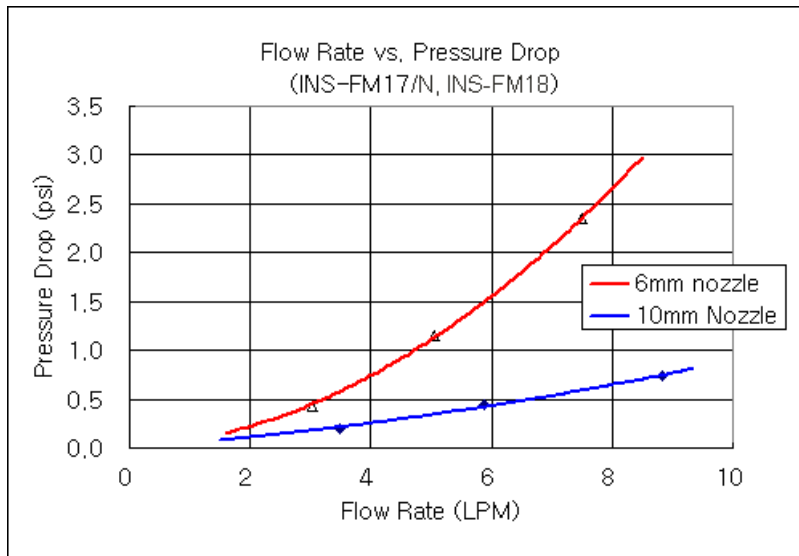
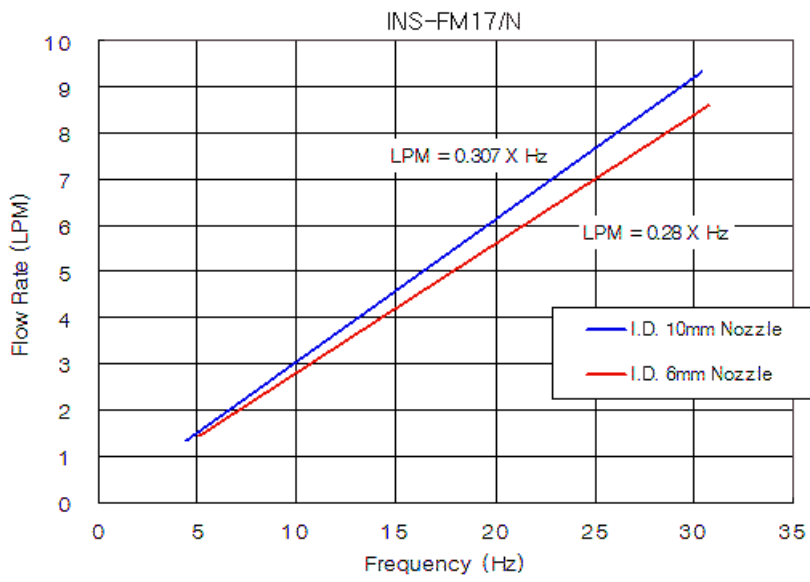


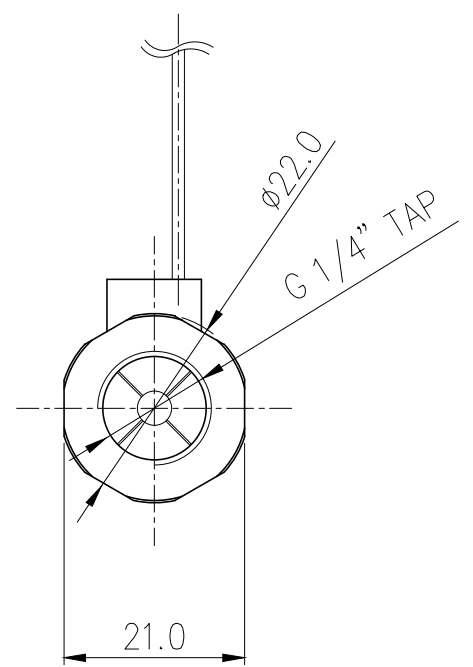
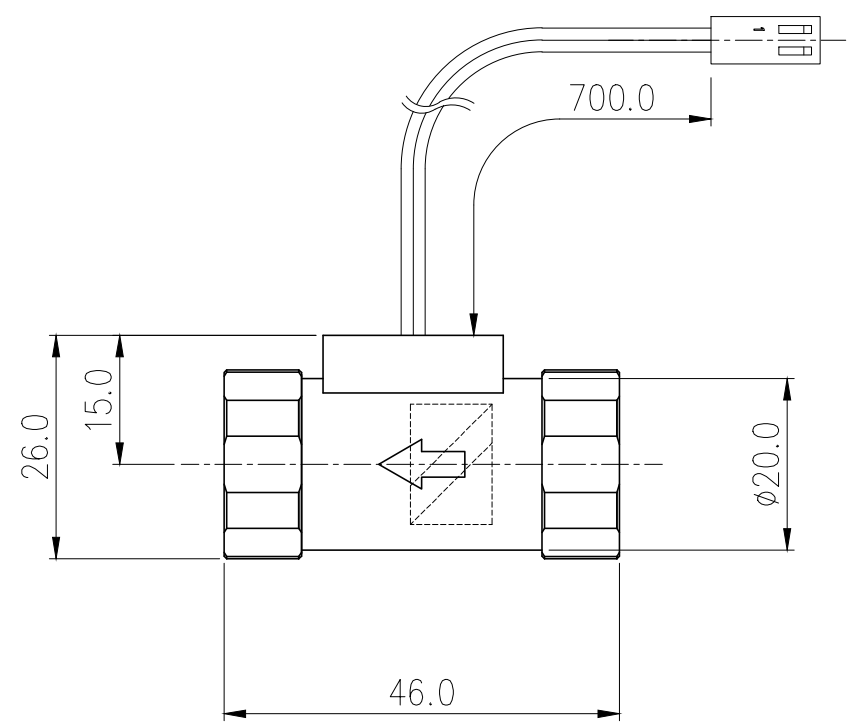
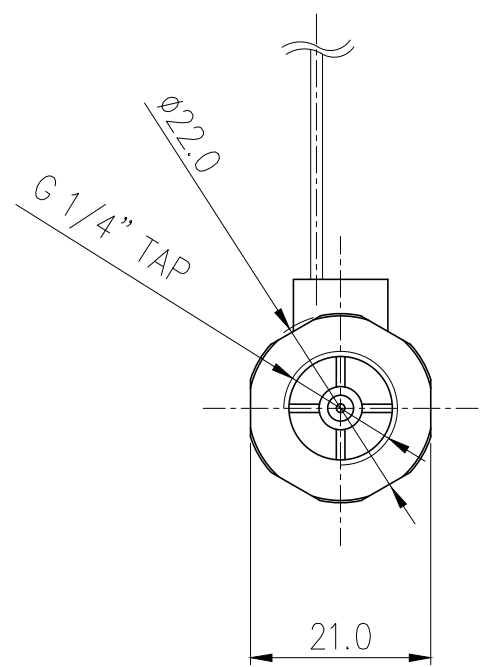
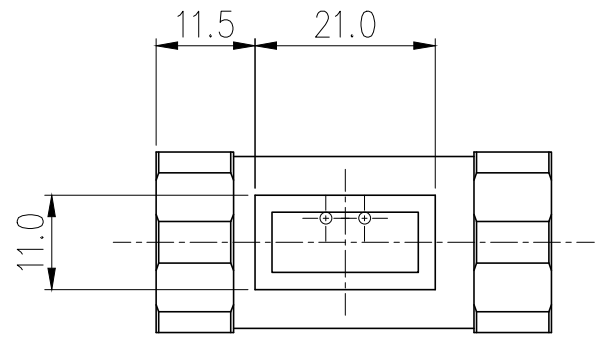


Koolance's inline flow meters provide electronic indication of real-time coolant flow rate. G 1/4 BSPP fitting threads, and primary materials are nickel-plated brass and acrylic. Approximate read range is 1.0-15 LPM (15.6-240 GPH). Wire length is about 28" (70cm).

Koolance [DCB-FM01](#) or [CTR-KSM100](#) can be used to display the flow rate, if not connected to a compatible Koolance cooling system.

Flow Meters	
Accuracy (Approx.)	+/-5%
Flow Rate Range	1.0-15 LPM (15.6-240 GPH)
General	
Weight	0.13 lb (0.06 kg)
Fitting Thread	G 1/4 BSPP
Materials	Nickel-Plated Brass, Brass, PMMA Acrylic, Stainless Steel, POM Acetal, Plastic, SmCo5
Max Pressure @ 25 °C	2kgf/cm2 (28.5psi)
Max Temp. Operating Tolerance	70 °C (158 °F)
Min Temp. Operating Tolerance	0 °C (32 °F)





NO.	DESCRIPTION	MATER'L	QUANTITY	REMARKS
	KOOLANCE	UNIT	MM	APPAR INS-FM17N
		SCALE	N/S	TITLE
DATE	BY	BY	APPRO BY	3RD ANGLE
04/12/2017	S.J.LEE			DWG. NO.
				Ass'y