

INS-FM18 Coolant Flow Meter, Stainless Steel

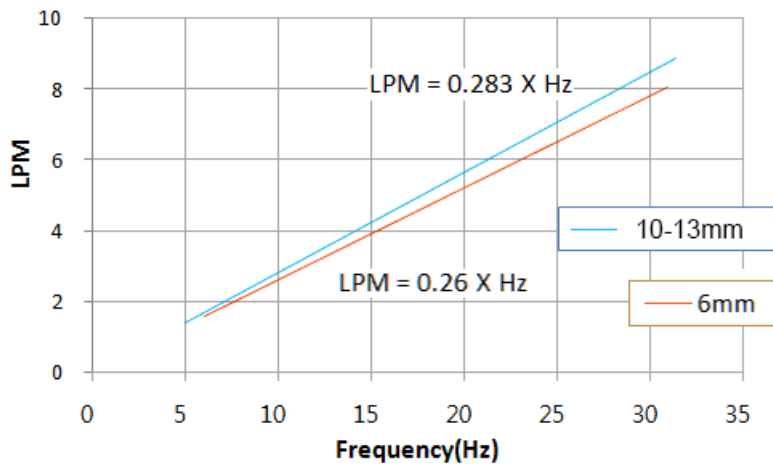


Koolance's inline flow meters provide electronic indication of real-time coolant flow rate. G 1/4 BSPP fitting threads, and primary materials are stainless steel and nickel-plated brass. Approximate read range is 2.0-15 LPM (32-240 GPH). Wire length is about 28" (70cm).

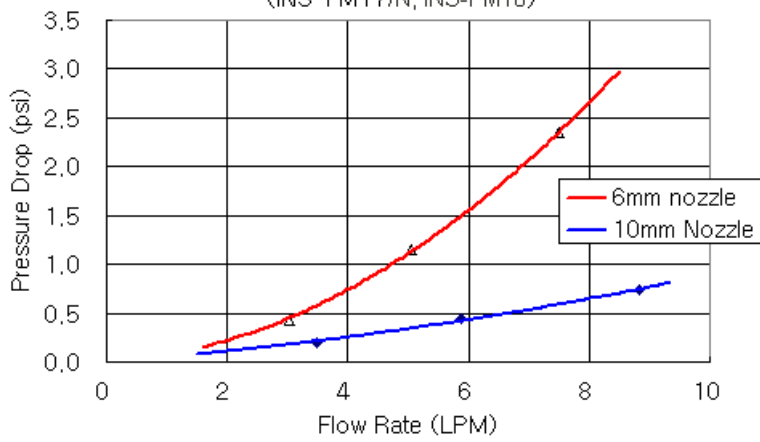
Koolance [DCB-FM01](#) or [CTR-KSM100](#) can be used to display the flow rate, if not connected to a compatible Koolance cooling system.

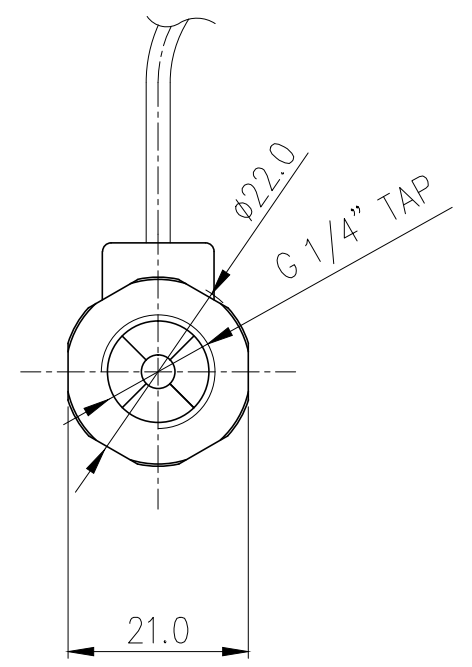
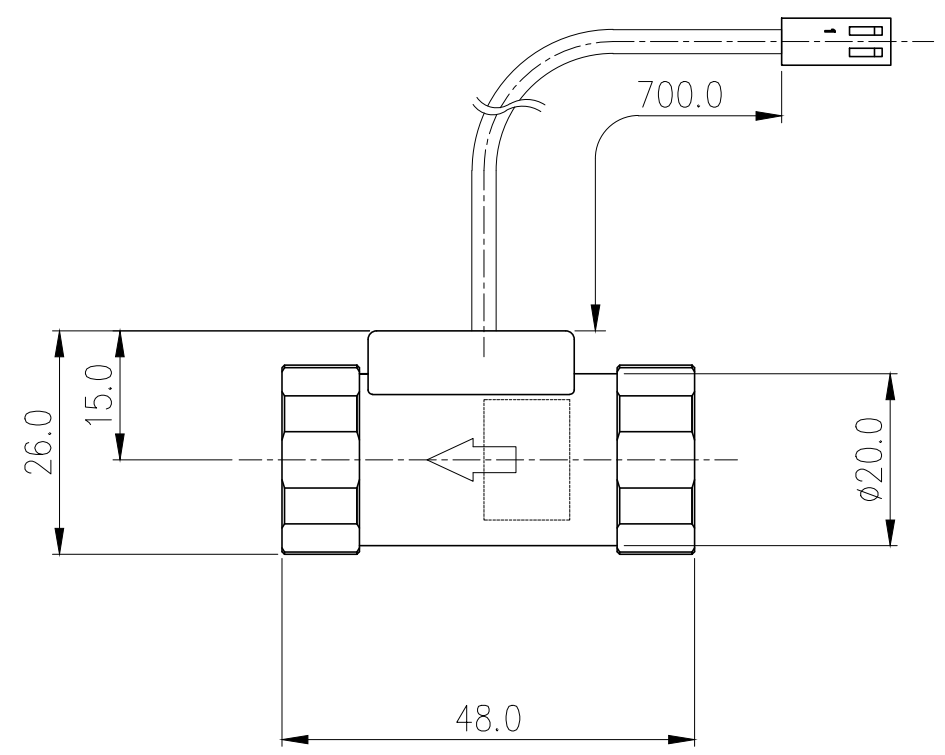
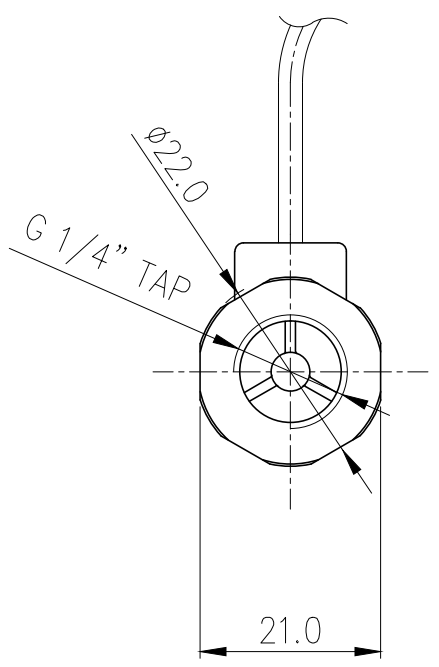
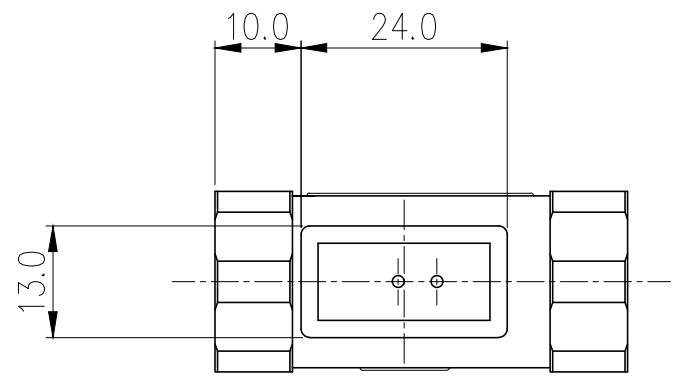
Flow Meters	
Accuracy (Approx.)	+/-5%
Flow Rate Range	2.0-15 LPM (32-240 GPH)
General	
Weight	0.18 lb (0.08 kg)
Fitting Thread	G 1/4 BSPP
Materials	Nickel-Plated Brass, Brass, PMMA Acrylic, Stainless Steel, POM Acetal, Plastic, SmCo5
Max Pressure @ 25 °C	10kgf/cm2 (142.2psi)
Max Temp. Operating Tolerance	100 °C (212 °F)
Min Temp. Operating Tolerance	0 °C (32 °F)

Flow Rate vs. Pulse Frequency



Flow Rate vs. Pressure Drop
(INS-FM17/N, INS-FM18)





NO.	DESCRIPTION	MATER'L	QUANTITY	REMARKS
	KOOLANCE	UNIT	MM	APPAR INS-FM18
		SCALE	N/S	TITLE
DATE	BY	BY	APPRO BY	3RD ANGLE
04/12/2017	S.J.LEE			Ass'y
			CODE NO.	DWG. NO.