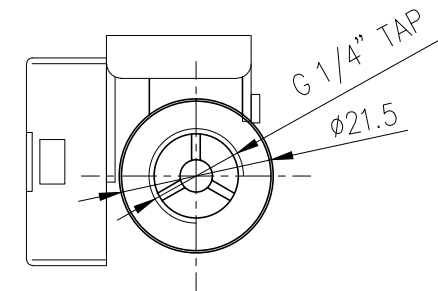
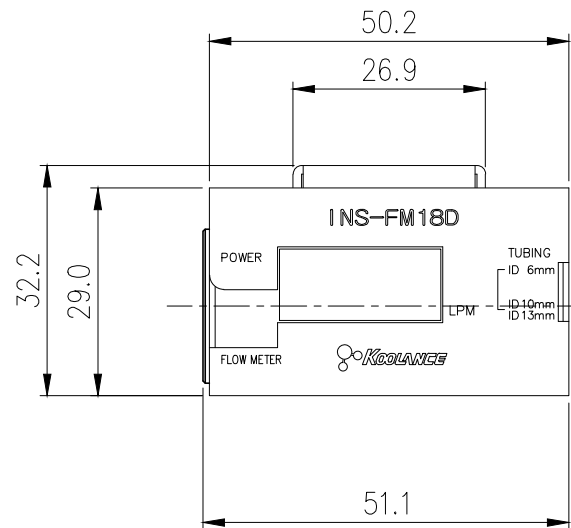
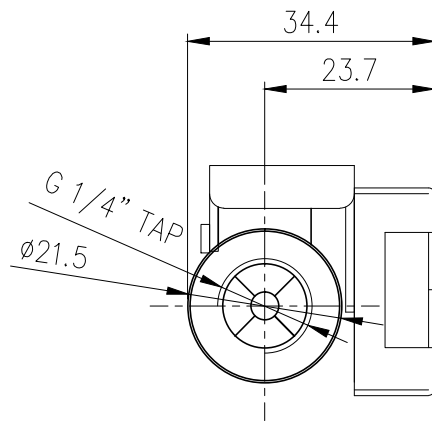
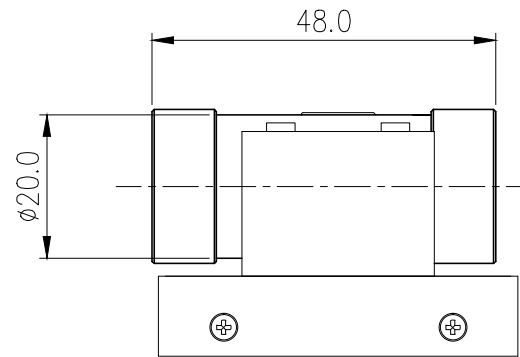
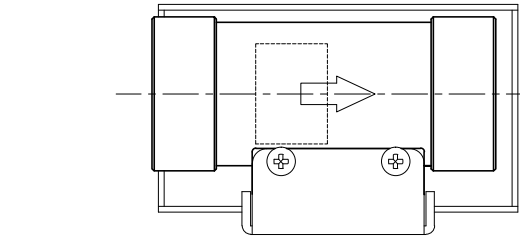



INS-FM18D Coolant Flow Meter with Display



INS-FM18D combines an LCD display with Koolance's stainless steel flow meter in a small footprint. The display shows flow rate in liters per minute (LPM) only. A 12VDC connection is required for power. Primary materials are a stainless steel body with nickel-plated brass G 1/4 BSPP threads.

Flow Meters	
Accuracy (Approx.)	+/-5%
Flow Rate Range	2.0-20 LPM (32-317 GPH)
General	
Weight	0.28 lb (0.13 kg)
Fitting Thread	G 1/4 BSPP
Max Pressure Tolerance @ 25°C	10kgf/cm ² (142.2psi)
Max Temperature Tolerance	60°C (140°F)
Min Storage Temperature (*No Freezing)	0°C (32°F)
Wetted Materials	Nickel-Plated Brass, Stainless Steel, POM Acetal, SmCo5



NO.		DESCRIPTION				MATER'L		QUANTITY		REMARKS	
						UNIT	MM	PART NO. INS-FM18D			
						SCALE	N/S	TITLE Ass'y			
DATE		BY	BY	BY	APPRO	BY	3RD ANGLE				
05/15/2017		S.J.LEE					DWG. NO.		ITEM		