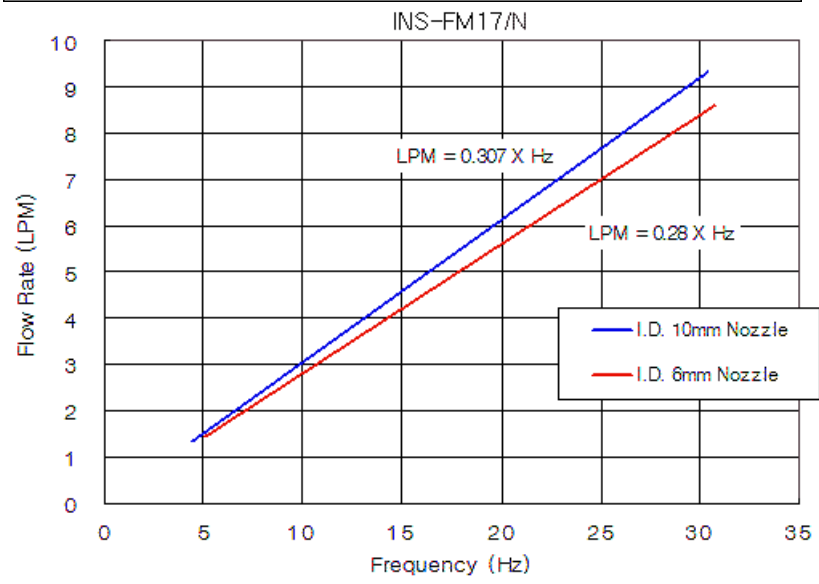
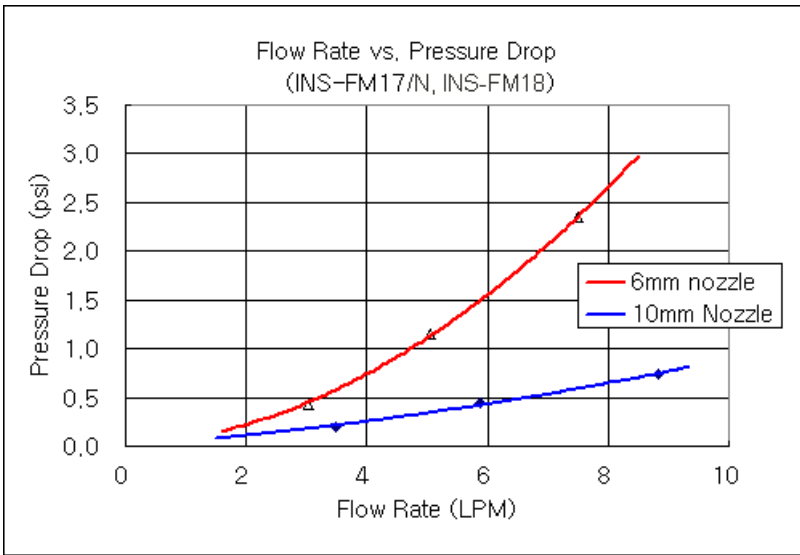


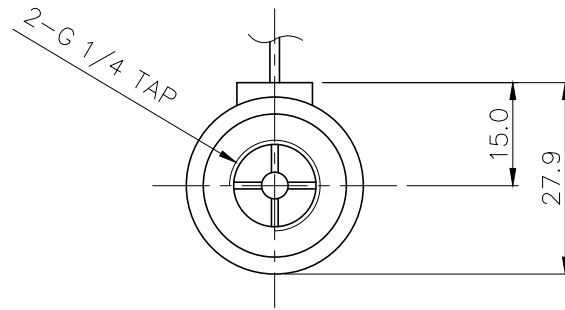
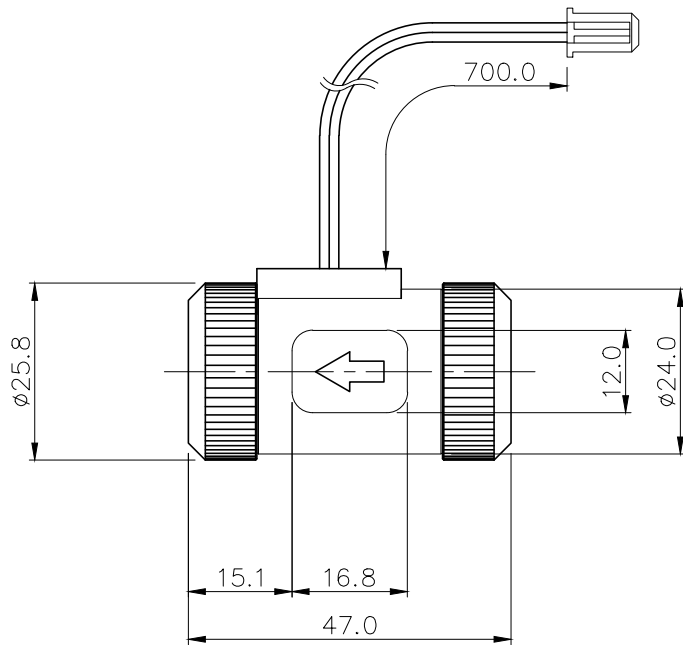
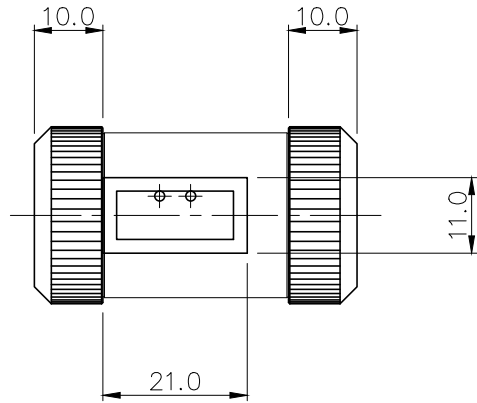


Koolance's inline flow meters provide electronic indication of real-time coolant flow rate. G 1/4 BSPP fitting threads, and primary materials are nickel-plated brass and acrylic. Approximate read range is 1.0-20 LPM (15.6-317 GPH). Wire length is about 28" (70cm). INS-FM19 is identical to INS-FM17N, but has an external metal shell for greater durability.

Koolance [DCB-FM01](#) or [CTR-KSM100](#) can be used to display the flow rate, if not connected to a compatible Koolance cooling system.

Flow Meters	
Accuracy (Approx.)	+/-5%
Flow Rate Range	1.0-20 LPM (15.6-317 GPH)
General	
Weight	0.16 lb (0.07 kg)
Fitting Thread	G 1/4 BSPP
Materials	Nickel-Plated Brass, Brass, PMMA Acrylic, Stainless Steel, POM Acetal, Plastic, SmCo5
Max Pressure Tolerance @ 25° C	5kgf/cm2 (71.1psi)
Max Temp. Operating Tolerance	70° C (158° F)
Min Temp. Operating Tolerance	0° C (32° F)





REV	DATE	CONTENTS	REVD BY	CHKD BY	APPD BY
REVISION					

NO.	DESCRIPTION			MATER'L		QUANTITY	REMARKS
				UNIT	MM		
	KOLANCE INC.					ITEM	INS-FM19
				SCALE	N/S	TITLE Ass'y	
DATE	BY	BY	BY	APPRO BY	3RD ANGLE		
	S.JLEE				CODE NO.	DWG. NO.	PAGE