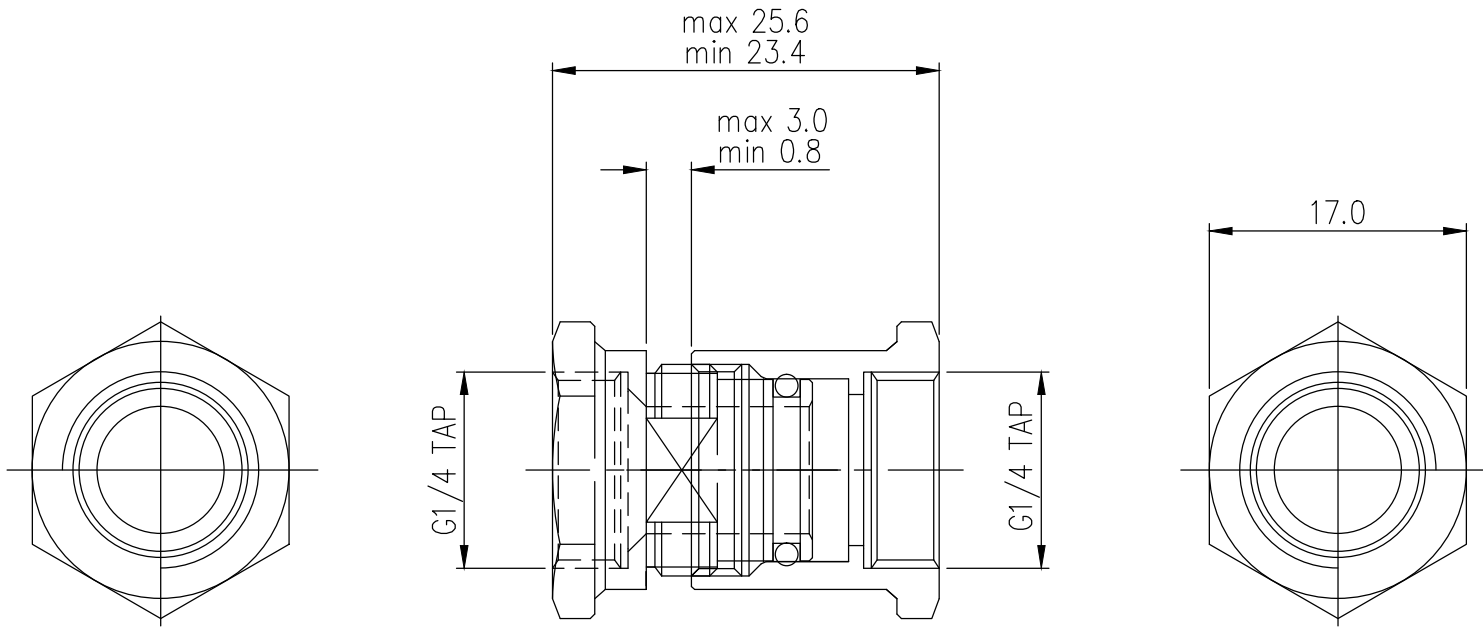


Computer L-Bracket with G 1/4 BSPP Threads

Dual panel-mounted socket threads for "internal/external" fittings on a computer chassis L-bracket. This also allows tubing sizes which are too large to fit through the chassis slot. Nickel-plated brass fittings with G 1/4 BSPP threads. This product may need to be temporarily disassembled during installation.

General	
Weight	0.10 lb (0.05 kg)



REV	DATE	CONTENTS	APPD BY

REVISION

NO.	DESCRIPTION			MATER'L	QUANTITY	REMARKS
	KOLANCE			UNIT	MM	PART NO. BKT-PCI-G
				SCALE	N/S	TITLE
DATE	BY	BY	BY	APPRD BY	3RD ANGLE	
	song				CODE NO.	ITEM
						PAGE