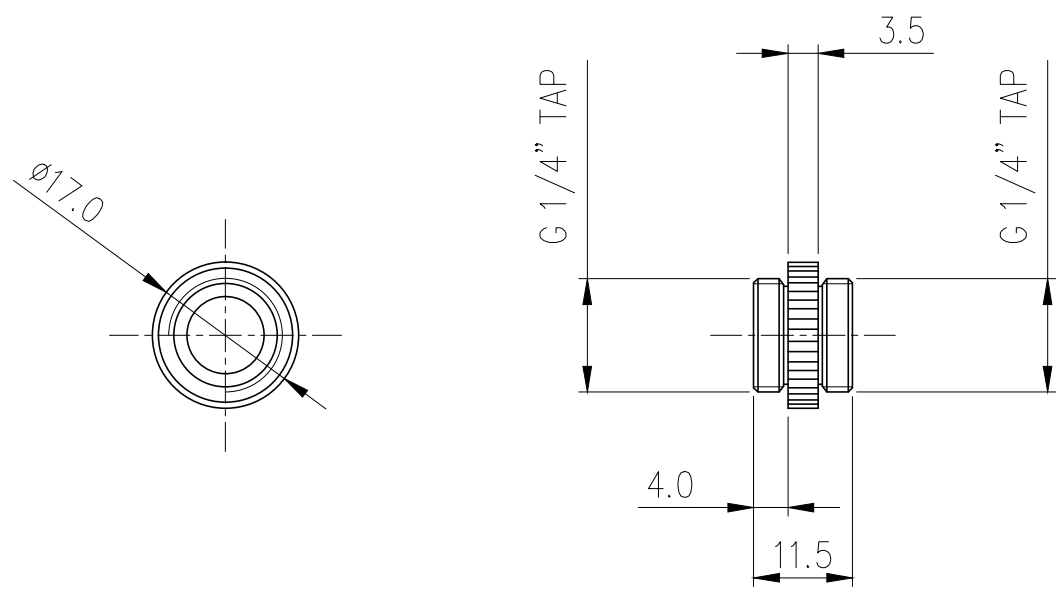



Fitting Coupling Adapter, *Black* Male-Male, G
1/4 BSPP



Male-Male G 1/4 BSPP (parallel) thread coupler. It is generally used as a gender changer for converting a female G 1/4 BSPP thread to male.

General	
Weight	0.02 lb (0.01 kg)
Fitting Thread	G 1/4 BSPP
Max Pressure Tolerance @ 25° C	15kgf/cm2 (213.4psi)
Max Temperature Tolerance	120° C (248° F)
Wetted Materials	Brass, EPDM



NO.		DESCRIPTION				MATER'L		QUANTITY	REMARKS
		BY	BY	BY	APPRO BY	UNIT	MM	APPAR	ADT-XMM(-BK)
		DATE				SCALE	N/S	TITLE	Ass'y
04/07/2017	S.J.LEE					3RD ANGLE			
						CODE NO.		DWG. NO.	