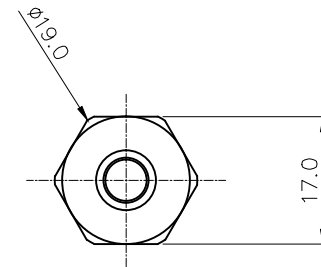
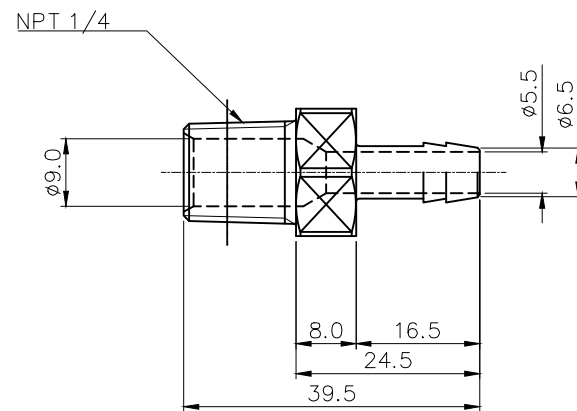
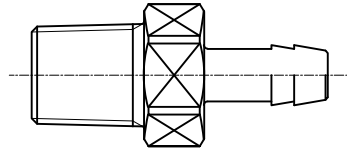




Single barb fitting for 1/4in (6mm) ID tubing. 1/4 NPT (tapered) thread. Includes spring clamp for 3/8in (10mm) OD tubing.

General	
Weight	0.03 lb (0.01 kg)
Max Pressure Tolerance @ 25° C	15kgf/cm2 (213.4psi)
Max Temperature Tolerance	120° C (248° F)
Wetted Materials	SUS 316, EPDM



REV	DATE	CONTENTS	REVD BY	CHKD BY	APPD BY
Δ					
REVISION					

NO.	DESCRIPTION				MATER'L	QUANTITY	REMARKS
Koolance				UNIT	MM	ITEM	FIT-V06N14-SS
				SCALE	N/S	TITLE	
DATE	BY	BY	BY	APPRD BY	3RD ANGLE	NPT 1/4 6mm 호스바브 노즐	
	ys.shin				CODE NO.	DWG. NO.	PAGE
					-	-	