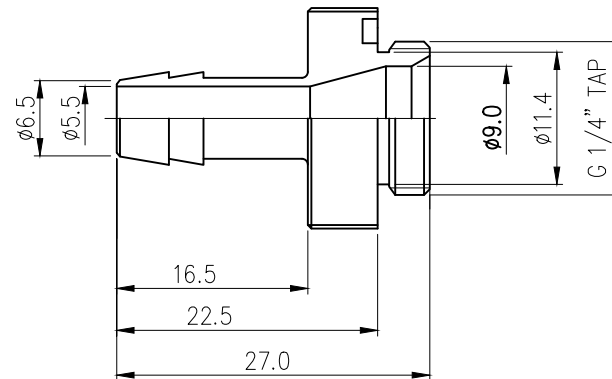
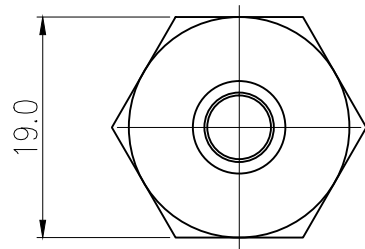




Single hose barb fitting for 1/4in (6mm) ID tubing. G 1/4 BSPP (parallel) thread. Includes hose clamp for 3/8in (10mm) OD tubing.

General	
Weight	0.03 lb (0.01 kg)
Max Pressure Tolerance @ 25° C	15kgf/cm2 (213.4psi)
Max Temperature Tolerance	120° C (248° F)
Wetted Materials	SUS 316, EPDM



REV	DATE	CONTENTS	REVD BY	CHKD BY	APPD BY
REVISION					

NO.		DESCRIPTION			MATER'L		QUANTITY	REMARKS	
KOOLANCE					UNIT	MM	ITEM FIT-V06B-SS		
					SCALE	N/S	TITLE		
DATE		BY	BY	BY	APPRO	BY	6mm G나사 호스바브 니플		
					3RD ANGLE				
					CODE NO.		DWG. NO.		PAGE
							—		