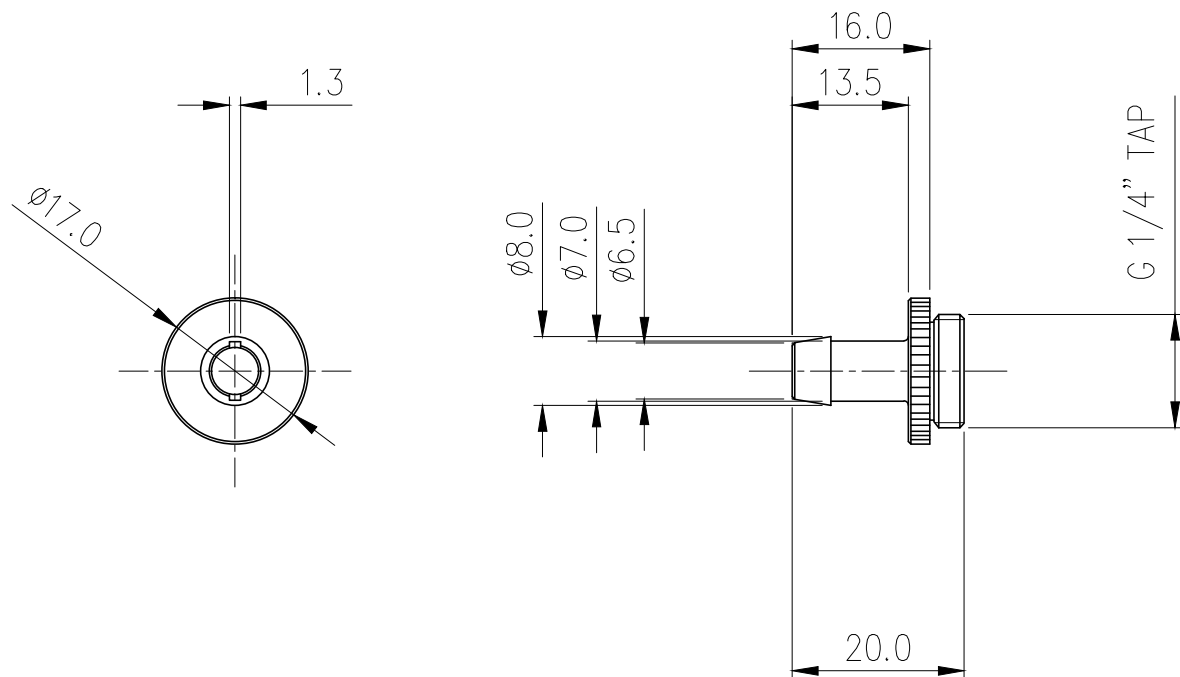



Barb Fitting for ID 06mm (1/4in), G 1/4 BSPP



Single hose barb fitting for 1/4in (6mm) ID tubing. G 1/4 BSPP (parallel) thread. Includes hose clamp for 3/8in (10mm) OD tubing.

General	
Weight	0.03 lb (0.01 kg)
Fitting Thread	G 1/4 BSPP
Max Pressure Tolerance @ 25° C	15kgf/cm2 (213.4psi)
Max Temperature Tolerance	120° C (248° F)
Wetted Materials	Brass, Nickel Plating, EPDM



NO.		DESCRIPTION				MATER'L		QUANTITY	REMARKS
						UNIT	MM	APPAR NZL-V06B(-BK)	
						SCALE	N/S	TITLE	
DATE	BY	BY	BY	APPRO	BY	3RD ANGLE		Ass'y	
04/21/2017	S.J.LEE					CODE NO.		DWG. NO.	