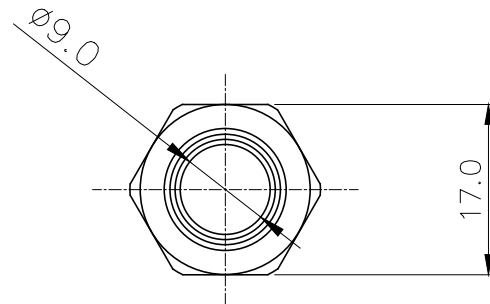
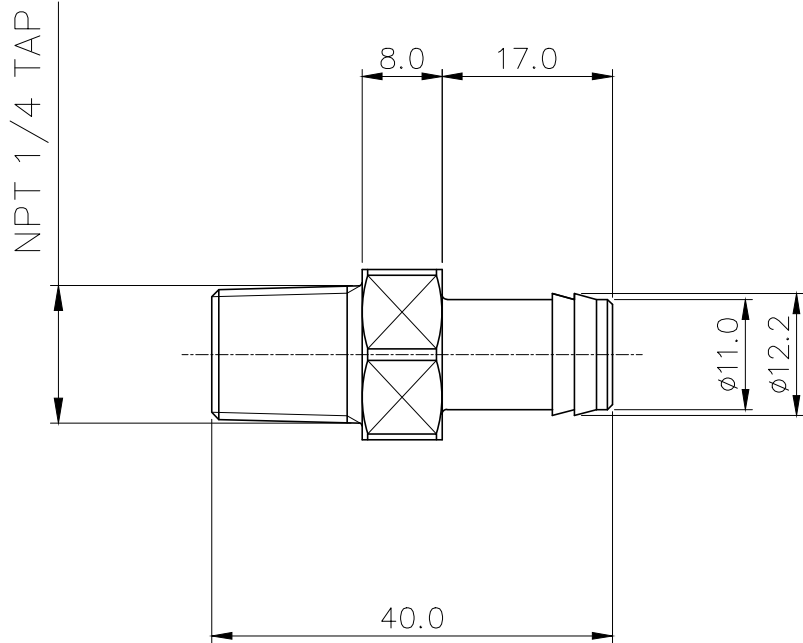




Single barb fitting for 3/8in (10mm) ID tubing. 1/4 NPT (tapered) thread. Spring clamp for 1/2in (13mm) OD included.

General	
Weight	0.03 lb (0.01 kg)
Max Pressure Tolerance @ 25° C	15kgf/cm2 (213.4psi)
Max Temperature Tolerance	120° C (248° F)
Wetted Materials	Brass, Nickel Plating, EPDM



REV	DATE	CONTENTS	REVD BY	CHKD BY	APPD BY
REVISION					

NO.	DESCRIPTION			MATER'L	QUANTITY	REMARKS
KOLANCE				UNIT	MM	APPAR FIT-V10N14
DATE	BY	BY	BY	APPRD BY	SCALE	N/S
					3RD ANGLE	
					REF. NO.	DWG. NO.

Ass'y